



**Horseshoe Crescent, Great Barr Birmingham B43 7BF**

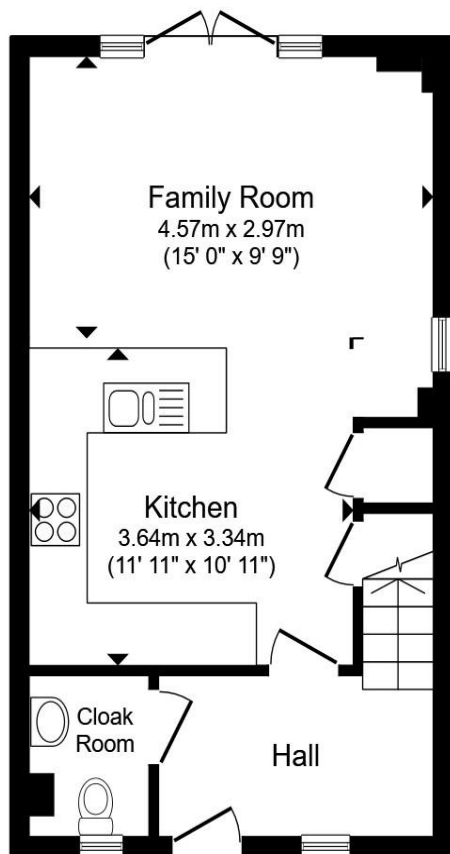


**welcome to**

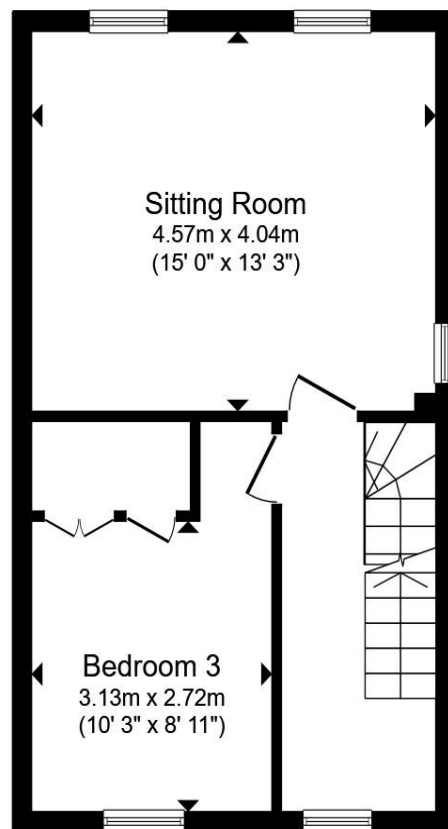
## **Horseshoe Crescent, Great Barr Birmingham**

A Beautifully presented three storey end town house located on the Nether Hall Estate in Great Barr offering spacious accommodation.

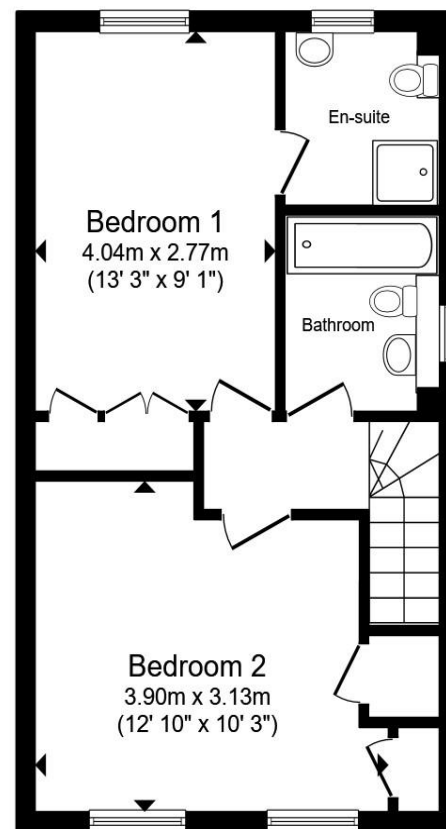




**Ground Floor**



**First Floor**



**Second Floor**

## Agency Note

Entrance Hall

Guest W.C

Lounge

Kitchen/ Diner

Bedroom One

Bedroom Two

Bedroom Three

En-Suite

Family Bathroom

Total floor area 112.6 m<sup>2</sup> (1,212 sq.ft.) approx

This floor plan is for illustrative purposes only. It is not drawn to scale. Any measurements, floor areas (including any total floor area), openings and orientation are approximate. No details are guaranteed, they cannot be relied upon for any purpose and they do not form part of any agreement. No liability is taken for any error, omission or misstatement. A party must rely upon its own inspection(s). Powered by [www.propertybox.io](http://www.propertybox.io)



welcome to

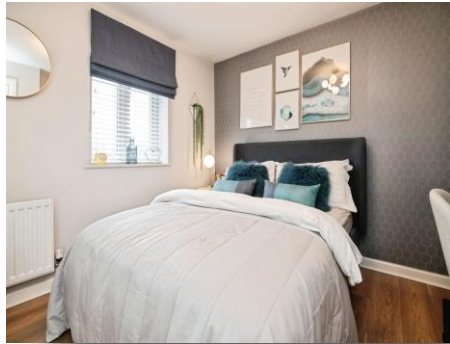
## Horseshoe Crescent, Great Barr Birmingham

- STUNNING INTERIOR DESIGN
- BEAUTIFULLY PRESENTED THROUGHOUT
- THREE STOREY END TOWN HOUSE
- GARAGE
- DRIVEWAY

Tenure: Freehold EPC Rating: Awaited

Council Tax Band: E

# £320,000



Please note the marker reflects the  
postcode not the actual property

check out more properties at [shipways.co.uk](https://shipways.co.uk)



Property Ref:  
GRB112497 - 0002

1. MONEY LAUNDERING REGULATIONS Intending purchasers will be asked to produce identification documentation at a later stage and we would ask for your co-operation in order that there is no delay in agreeing the sale. 2. These particulars do not constitute part or all of an offer or contract. 3. The measurements indicated are supplied for guidance only and as such must be considered incorrect. Potential buyers are advised to recheck measurements before committing to any expense. 4. We have not tested any apparatus, equipment, fixtures or services and it is in the buyers interest to check the working condition of any appliances. 5. Where an EPC, or a Home Report (Scotland only) is held for this property, it is available for inspection at the branch by appointment. If you require a printed version of a Home Report, you will need to pay a reasonable production charge reflecting printing and other costs. 6. We are not able to offer an opinion either written or verbal on the content of these reports and this must be obtained from your legal representative. 7. Whilst we take care in preparing these reports, a buyer should ensure that his/her legal representative confirms as soon as possible all matters relating to title including the extent and boundaries of the property and other important matters before exchange of contracts.

Shipways is a trading name of Sequence (UK) Limited which is registered in England and Wales under company number 4268443, Registered Office is Cumbria House, 16-20 Hockliffe Street, Leighton Buzzard, Bedfordshire, LU7 1GN. VAT Registration Number is 500 2481 05.

**Not for marketing purposes INTERNAL USE ONLY**



**0121 358 2281**



[greatbarr@shipways.co.uk](mailto:greatbarr@shipways.co.uk)



905 Walsall Road, Great Barr, BIRMINGHAM,  
West Midlands, B42 1TN



**[shipways.co.uk](https://shipways.co.uk)**