



Torrington Place, E1W

£900,000

 3  1  1  C

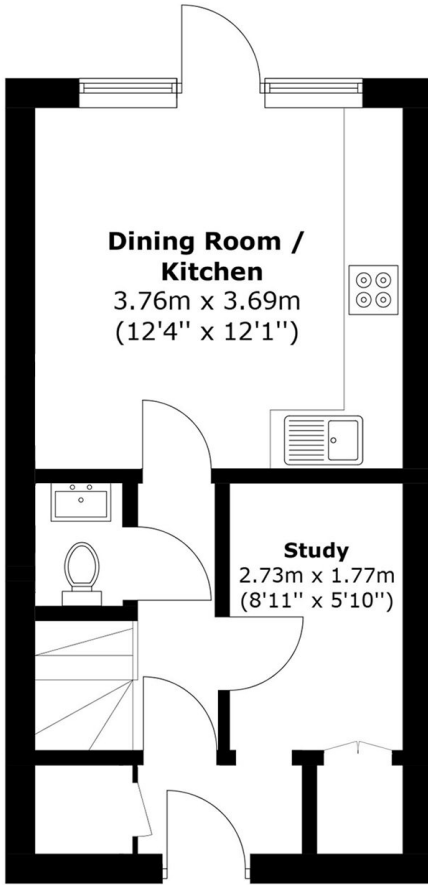
- Three Bedrooms
- Freehold House
- West Facing Garden
- Private Parking
- Well Presented Throughout
- Moments From The Canal



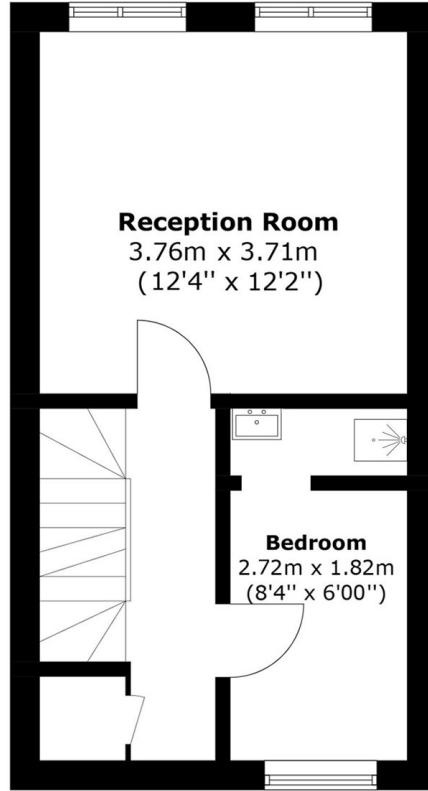
We are pleased to present this exceptional three bedroom, three-storey house for sale, located in the peaceful, pedestrianised area of West Wapping, just moments from the picturesque Ornamental Canal. This well-appointed home features a generously sized reception room with a separate kitchen and a ground floor study. The property comprises three bedrooms (one with a shower room). The kitchen sliding doors lead directly to a contemporary private garden. It also comes with a parking space. Being offered chain free.

This property is ideally located in central Wapping, offering a wide range of pubs, bars, restaurants, and cafes right on your doorstep. With easy access to St Katharine's Docks, Wapping Overground Station, Tower Hill Stations, and DLR links, commuting to the City, London Bridge, Canary Wharf, or Shoreditch. Buses on the street further enhance accessibility.

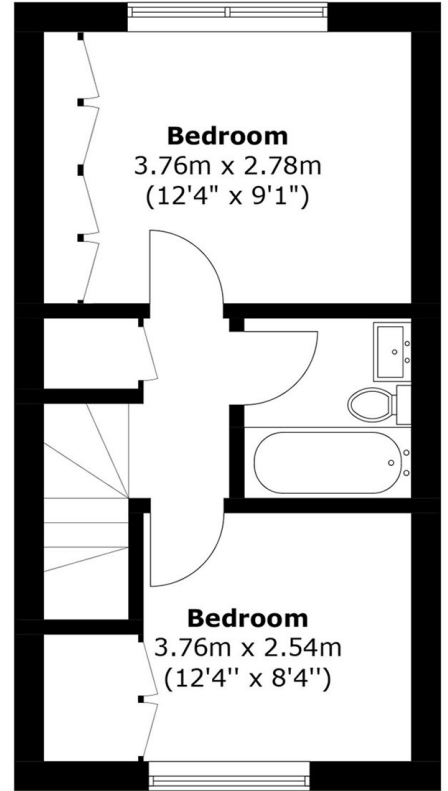




Ground Floor



First Floor



Second Floor

Total area: Approx. 84.9 sq. meters (913.8 sq. feet)

35A Wapping High Street,
London, E1W 1NR
020 7665 5589
ea2group.com