



Leander Road, SW2

£620,000

2 1 1 D

- Two Double Bedrooms
- Open-Plan Kitchen/Reception Room
- Large Garden
- Cellar
- Exposed Brickwork
- Period Conversion





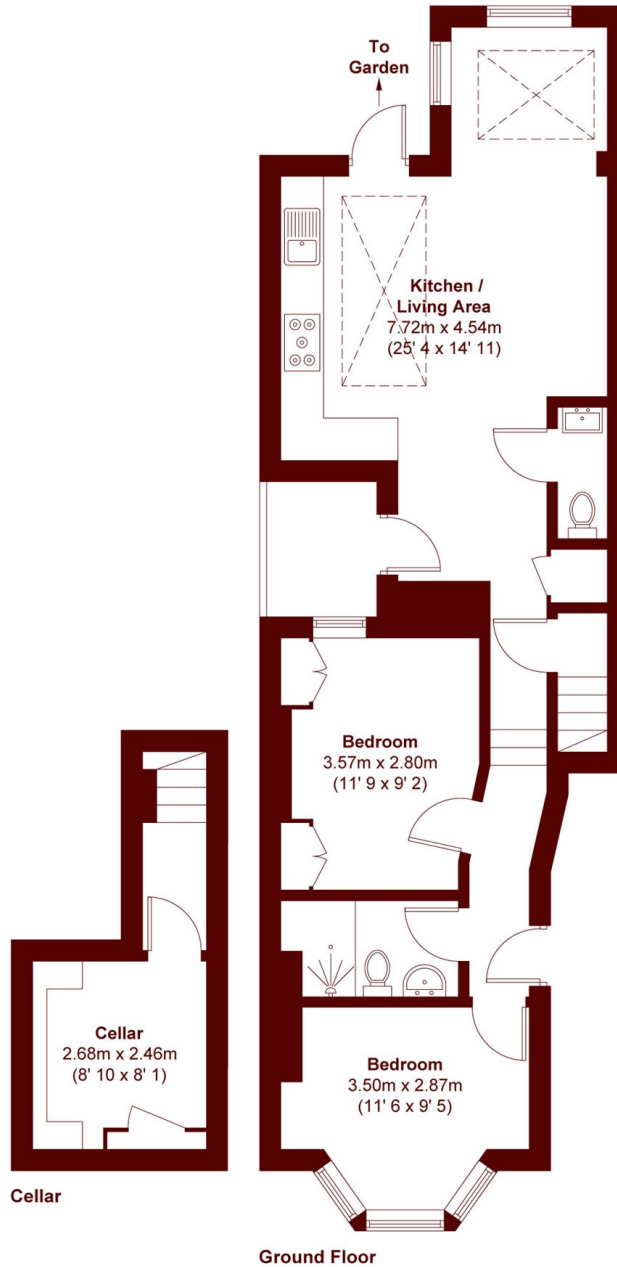
ABOUT THE PROPERTY

An impeccable two double bedroom apartment occupying the ground floor of this handsome period building. With a stunning interior, the property opens onto a stylish and well arranged open-plan kitchen/ reception room with a fitted kitchen, a large seating and dining area, exposed brickwork, two generous double bedrooms and a three piece bathroom with an additional w/c. The property also retains a landscaped rear private garden and a large cellar boasting a snug area.



Leander Road sits just a short journey away from the vibrant shops, bars and boutiques of central Brixton as well as access to Victoria line services via Brixton Underground station. The well known Brockwell Park is also just a short stroll away.





APPROX. GROSS INTERNAL FLOOR AREA 738 SQFT / 68.6 SQM
APPROX. GROSS EXTERNAL AREA 31 SQFT / 2.9 SQM

Marsh & Parsons Brixton
400-402 Coldharbour Lane,
London, SW9 8LF
020 7733 4595

We aim to make our particulars both accurate and reliable. However, they are not guaranteed; nor do they form part of an offer or contract. If you require clarification on any points then please contact us, especially if you're traveling some distance to view. Please note that appliances and heating systems have not been tested and therefore no warranties can be given as to their good working order.