



**Guide Price**  
**£545,000**

**Freehold**

4x  2x  1x 

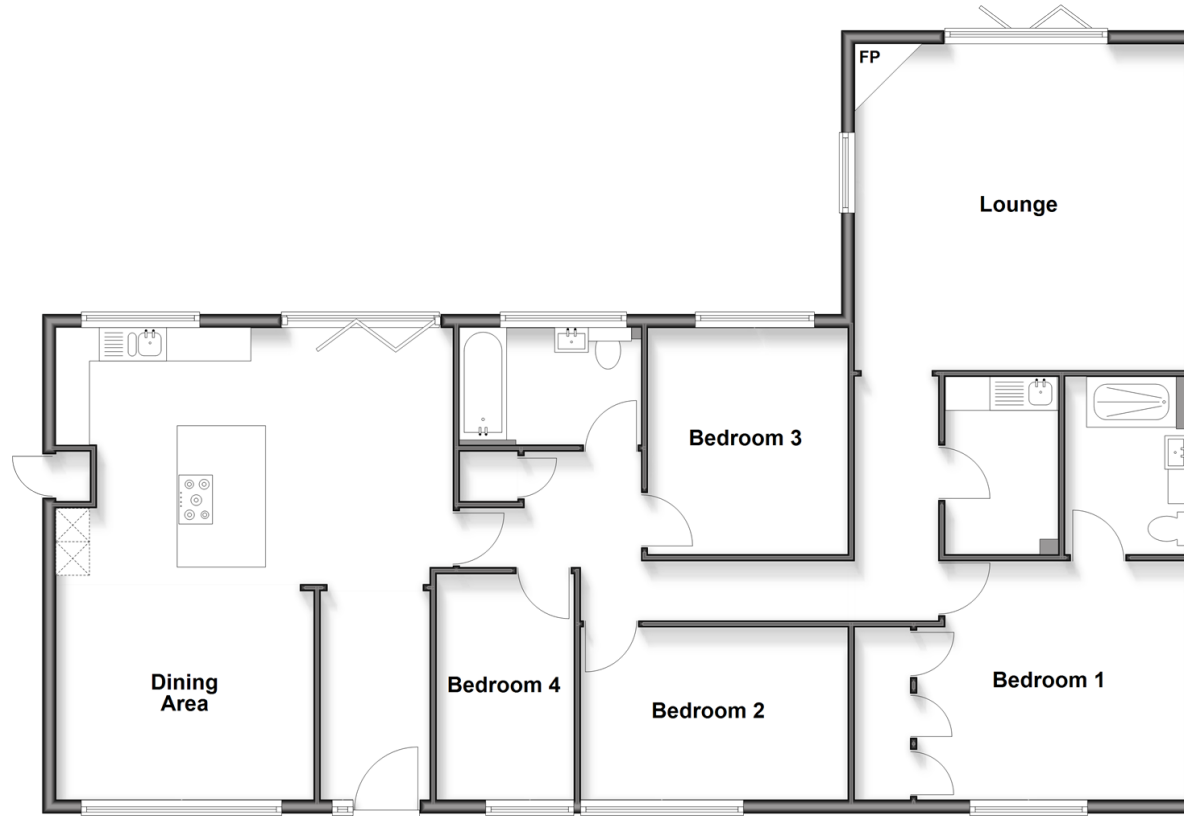
**Beverley Gardens,  
Beach Estate,  
Dymchurch, Kent, TN29**

**OVER 60?**

Secure this property  
for up to **59% less!**

*Wards*  
Helping you move forwards

**Ground Floor**  
Approx. 139.3 sq. metres (1498.9 sq. feet)



## Accommodation

### GROUND FLOOR

Entrance Hall

Kitchen: 19'3 x 12'5 (5.87m x 3.79m)

Dining Area: 12'2 x 10'1 (3.71m x 3.08m)

Utility Room: 9'3 x 5'5 (2.82m x 1.65m)

Lounge: 16'7 x 15'11 (5.06m x 4.85m)

Bedroom 1: 13'3 x 11'7 (4.04m x 3.53m)

En-Suite Shower Room: 8'7 x 6'1 (2.62m x 1.86m)

Bedroom 2: 12'3 x 8'8 (3.74m x 2.64m)

Bedroom 3: 11'1 x 8'10 (3.38m x 2.69m)

Bedroom 4: 11'6 x 6'7 (3.51m x 2.01m)

Bathroom: 8'3 x 5'8 (2.52m x 1.73m)

### OUTSIDE

Off Road Parking

Garage

Front & Rear Gardens



## Main features

- No onward chain
- Beautiful home refurbished to a high standard
- Re-fitted kitchen with integrated appliances and self cleaning oven
- New windows, flooring and composite front door
- Bedroom 1 with large walk-in wardrobe and re-fitted en-suite shower room
- Extremely large lounge with feature log burner



### Nearest Schools

Primary Schools: Palmmarsh Primary 1.7 miles, Lympe Primary 2.0 miles, Dymchurch Primary 2.2 miles  
Secondary Schools: Brockhill Park Performing Arts College 4.1 miles, Marsh Academy 6.1 miles, Folkestone School for Girls 6.8 miles



### Transport Information

Train Stations: Sandling 4.4 miles, Westenhanger 5.7 miles, Folkestone West High Speed Link 7.5 miles



### Address

Beverley Gardens, Beach Estate, Dymchurch, Kent, TN29



### Directions

For directions to this property please contact us.



*Wards*  
Helping you move forwards

Call Hythe Branch 01303 267473 ■ [wardsofkent.co.uk](http://wardsofkent.co.uk)



- Legal advice should be taken to verify fixtures/fittings, planning, alterations and/or lease details
- Appliances & services are untested, dimensions are approximate and floor plans are not to scale
- Through a Homewise Home For Life Plan people aged 60+ can secure this property for up to 59% less, by purchasing a Lifetime Lease

EPC RATING	CURRENT:	POTENTIAL:
	D(65)	A(94)

12825302/20260318/MIB/MIB