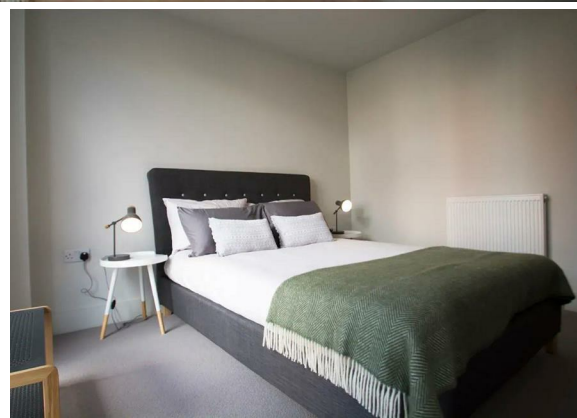
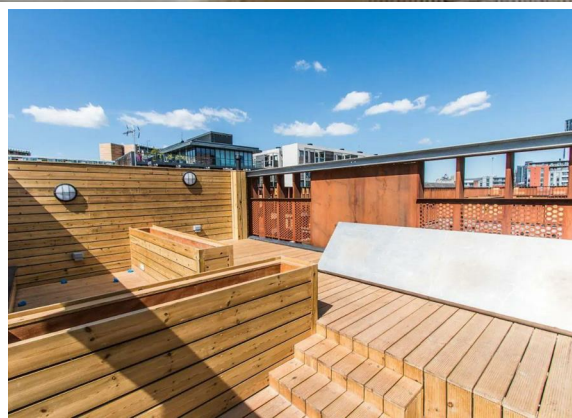




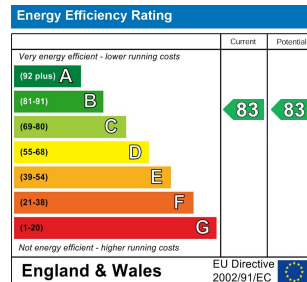
**1 Bed
Apartment
located in 3 Arundel
Street**

£1,050 PCM



 **NPP
RESIDENTIAL**

EPC Rating: B
Council Tax Band: B



DIRECTIONS

CONTACT

22 Lloyd Street
Manchester
M2 5WA

E: info@nppresidential.co.uk
T: 0161 639 0059
<https://nppresidential.co.uk/>

