



Portsmouth Road, KT7

£1,395,000

An exceptional family home of over 2,200 sq ft, beautifully renovated to create bright, stylish, and versatile living spaces throughout. At the heart of the home is an impressive open-plan kitchen breakfast room, flooded with natural light and featuring a large island, a hand made kitchen, ample dining space, and triple sliding doors opening directly onto the immaculate rear garden

This property is ideally located near Giggs Hill Green, close to Thames Ditton Village and Thames Ditton station and just over a mile to Surbiton's popular town centre with it's mainline train station and fast train to London Waterloo in 16 minutes

Features

- Detached Home
- Beautifully Presented
- Four Bedrooms
- Three Bathrooms
- Garage
- Off Street Parking



Portsmouth Road, KT7

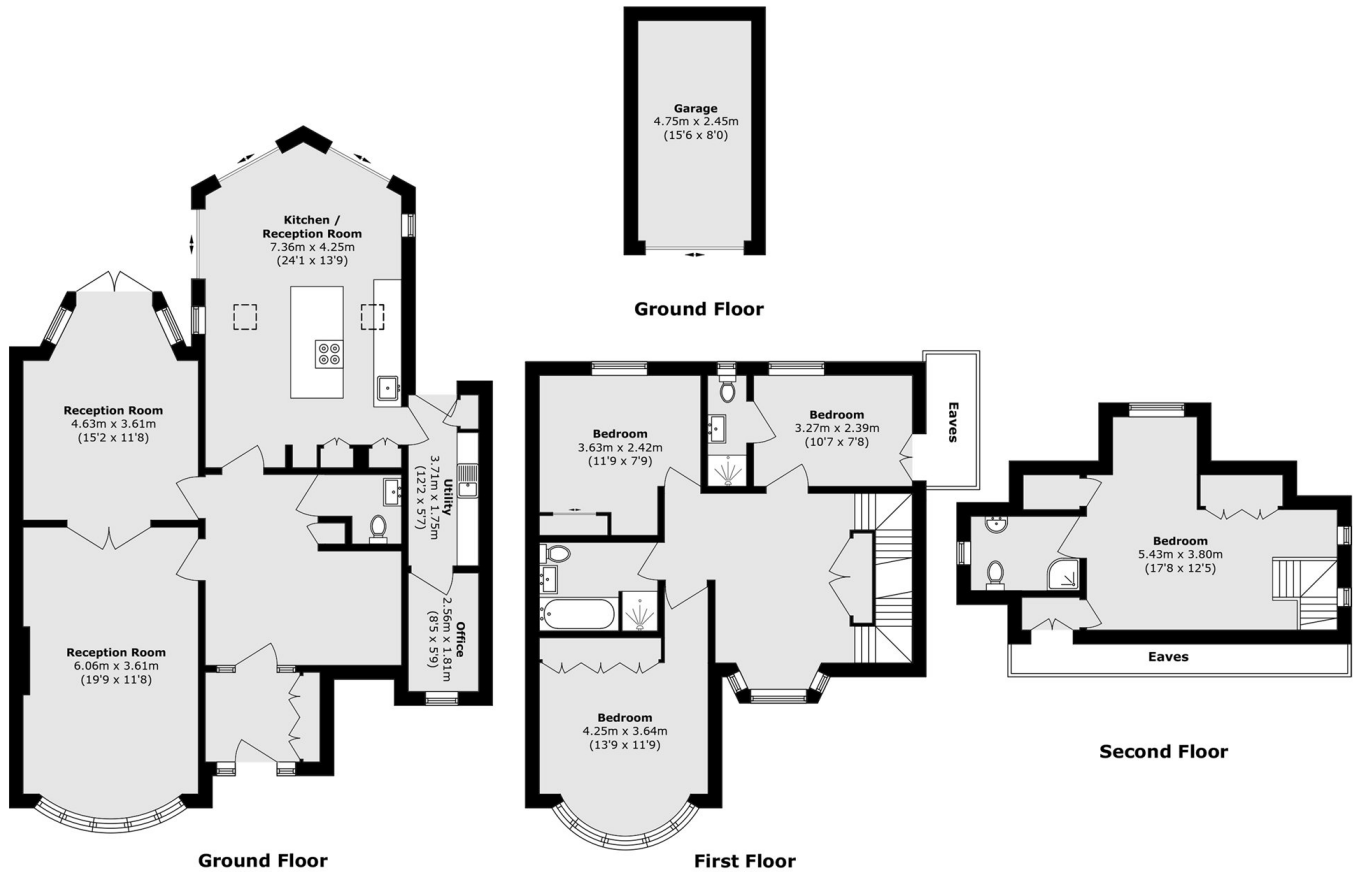
At the front of the property, a welcoming sitting room with a bay window and log burner leads through to a flexible dining/family room with full-height glazed doors overlooking the garden. Further ground floor accommodation includes a dedicated home office and separate utility room, all connected by a well-designed layout.

The first and second floors offers four spacious bedrooms and three smart bath/shower rooms, two of which are ensuite. A cleverly designed study area on the landing provides additional space for home working or study.

Outside the front garden is landscaped beautifully, there is a detached garage and off street parking. To the rear is a lovely private garden comprising green space and patios for outdoor dining and entertaining.



Portsmouth Road, Thames Ditton, KT7



Total area (approx.): 193.3 sq. m (2080.7 sq. ft)

Garage area (approx.): 11.6 sq. m (124.9 sq. ft)

(Excluding Eaves)