



44 Wentworth Drive

Corby, NN17 5AQ



Simpson West

Nestled within the ever-desirable Priors Hall Park development, this beautifully presented first-floor apartment offers modern living at its finest. Boasting two generously sized double bedrooms, this home is perfectly suited for first-time buyers, downsizers, or investors alike.

Step inside to find a welcoming entrance hall leading through to a spacious and light-filled living/dining room, seamlessly flowing into a stylish contemporary kitchen complete with integrated appliances—ideal for entertaining or everyday family life. The larger of the two bedrooms benefits from fitted wardrobes and its own private en-suite shower room, while the second double bedroom is served by a sleek family bathroom.

Residents will also enjoy the convenience of allocated off-road parking, as well as easy access to a wealth of local amenities, including schools, shops, and leisure facilities—all just a short stroll away.

With its combination of modern design, a highly sought-after location, and excellent energy efficiency (rated B), this apartment is sure to attract strong interest. Early viewings are highly recommended to avoid disappointment.

Service Charge/Ground Rent: £1000 per annum

Urban & Civic Estate Charge: £286 per annum

Council Tax Band: B Energy Rating B.

£145,000



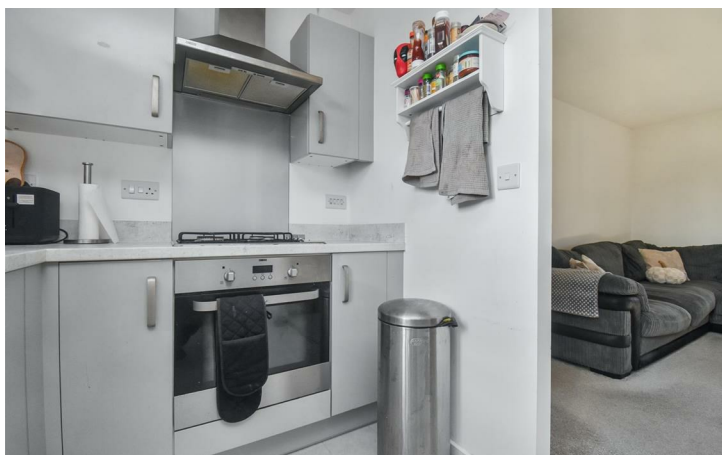
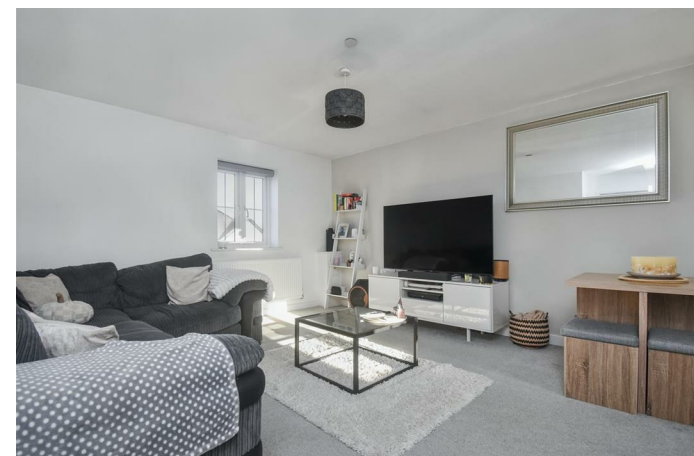
2



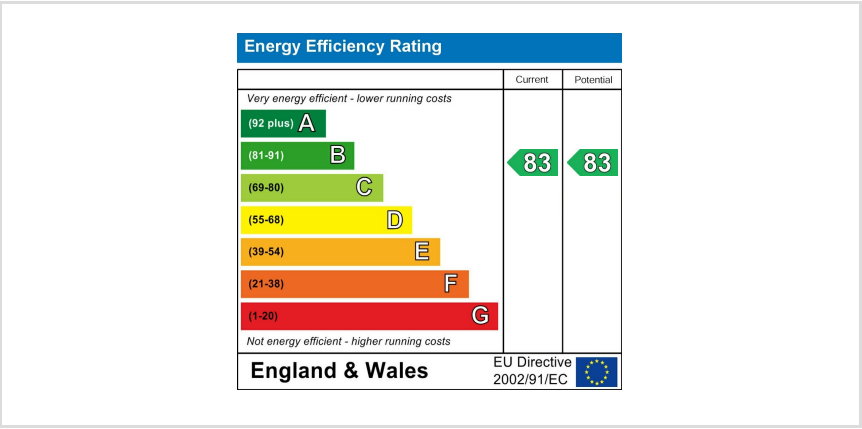
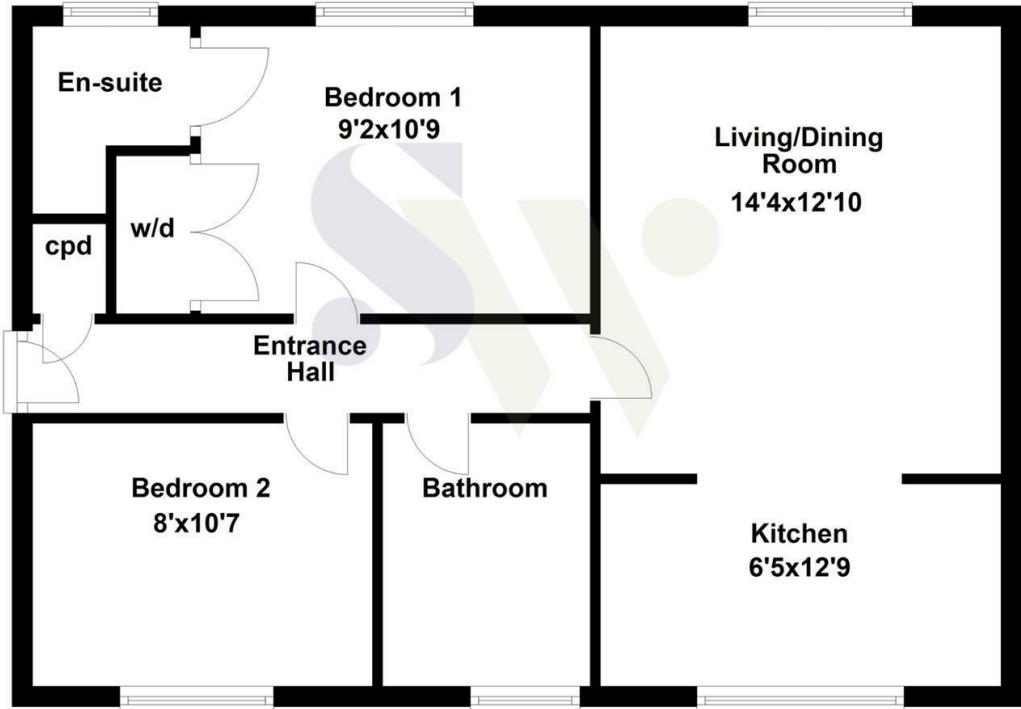
2



1



Second Floor



When you buy with Simpson West, you know **you'll be in safe hands**. From the moment you walk through our doors, we'll make you **feel truly welcome**. Our sales consultants and financial advisors will take you through **every step of the process**, offering **free expert advice** along the way, from help choosing the right mortgage and insurance through to finding your conveyancer. And if you need help selling your home too, **with over 20 years of local experience, you can trust us to get you moving**.



**Simpson
West**

Making Every
Journey Personal



01536 202007

info@simpsonwest.co.uk

<https://www.simpsonwest.co.uk/>

64 Corporation Street, Corby, Northants, NN17 1NH