

HENDERSON CONNELLAN

ESTATE AGENTS



Thornton Avenue, Kettering NN15

"Style and Taste"

"Style and Taste"

Have combined to create the stunning interior of this detached family home which offers spacious and versatile living, thoughtfully designed for modern family life. Upon entering, an inviting hallway with specialist flooring leads to a convenient guest cloakroom. The ground floor boasts a bright living room featuring a stunning contemporary media wall, alongside a fantastic open-plan kitchen/breakfast/family room. This central hub is complete with a range of base and eye-level units, integrated appliances, and French doors that open directly to the garden, perfect for indoor-outdoor living. A separate utility room offers additional storage and appliance space whilst the study/snug provides versatile living options currently used as a playroom. Upstairs, a sizeable landing leads to four generous double bedrooms, with the main bedroom benefiting from an ensuite shower room. A well-appointed family bathroom serves the remaining bedrooms. A driveway provides off road parking in front of the garage and the gardens have been beautifully landscaped and comes complete with garden pod, ideal for those working from home or a garden retreat.

Living Room - 3.99m x 3.25m (13'1" x 10'8")

Dining Room - 3.28m x 3m (10'9" x 9'10")

Kitchen/Breakfast/ Family Room

Utility Room - 1.85m x 1.6m (6'1" x 5'3")

Guest WC - 1.6m x 0.91m (5'3" x 3'0")

Bedroom One - 3.45m x 3.3m (11'4" x 10'10")

Ensuite - 1.93m x 1.85m (6'4" x 6'1")

Bedroom Two - 3.48m x 3.3m (11'5" x 10'10")

Bedroom Three - 3m x 2.74m (9'10" x 9'0")

Bedroom Four - 2.51m x 2.34m (8'3" x 7'8")

Bathroom - 2.49m x 1.93m (8'2" x 6'4")

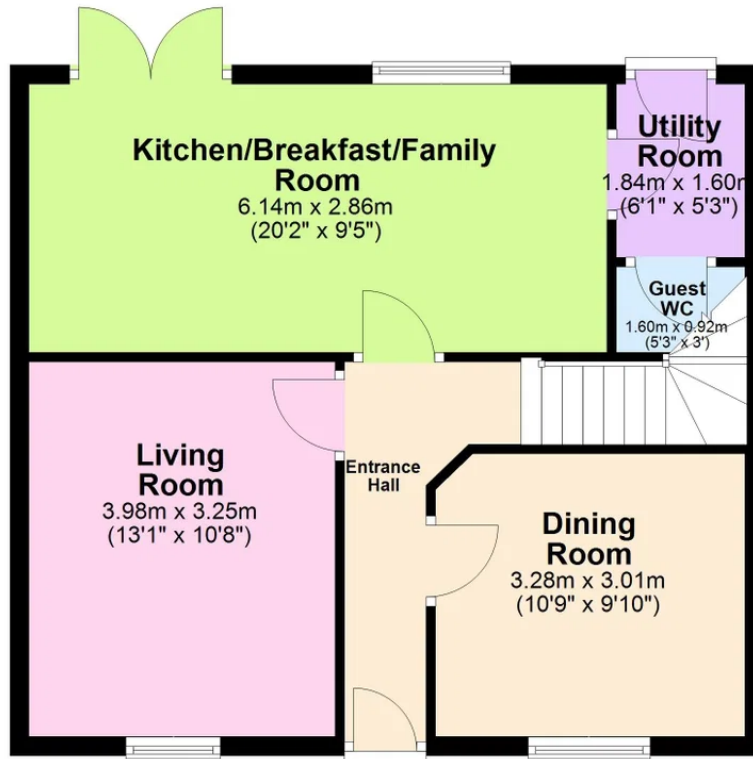
- Beautifully presented
- Estate maintenance charge of £189.68 annually
- Four double Bedrooms with Ensuite to main Bedroom
- Open Plan Kitchen/Breakfast/Family Room
- Versatile Reception Room
- Utility Room
- Garden with versatile pod ideal for home working
- Off Road Parking and Garage
- EPC RATING: B COUNCIL TAX: E
- Tenure: Freehold





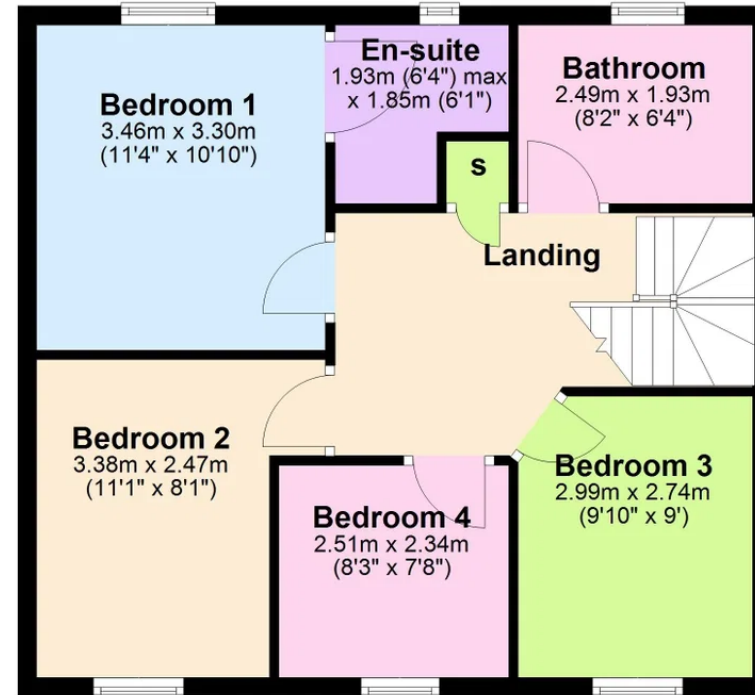
Ground Floor

Approx. 53.4 sq. metres (575.3 sq. feet)



First Floor

Approx. 54.4 sq. metres (585.9 sq. feet)



Total area: approx. 107.9 sq. metres (1161.2 sq. feet)