



Symonds
& Sampson

Plot 140 Loveridge Grove

Nottingham, Weymouth, Dorset

Plot 140 Loveridge Grove

Nottingham
Weymouth
Dorset DT3 5DF

Plot 140 is constructed with brick under a tiled roof with accommodation arranged over two floors comprising of three bedrooms and two bathrooms, garage and parking space



- 2 storey mid-terrace house
- 3 double bedrooms, including principal bedroom with en-suite
 - Sitting Room
 - Enclosed garden
 - Flooring included
- Garage and one parking space
 - Build Complete
- Flooring fitted and turf laid
- EPC Predicted Energy Performance Rating - B
- Please call Symonds & Sampson Poundbury office on 01305 251154

Guide Price £410,000
Freehold

Weymouth Sales
01305 756989
weymouth@symondsandsampson.co.uk



ACCOMMODATION

On the ground floor, a welcoming entrance hall with useful downstairs cloakroom and understairs storage cupboard, leads into a sitting room. The open plan kitchen/dining room will be fitted with attractive wall and floor cupboards with worksurfaces over. There will be a range of integrated appliances and, external doors to the garden. On the first floor are three double bedrooms with the principal bedroom benefitting from an en-suite shower room, a contemporary fitted bathroom suite with bath and shower over, airing cupboard and hatch to a loft space.

Please Note:

The drawings and particulars are for illustrative purposes only and shall not form part of any contract. Example images on the brochure are from a typical show home.

OUTSIDE

Externally, shrub and flower borders to the front. A timber gate to the side with access to the enclosed lawned garden with a paved area. Garage to the front with parking area for one car.

DIRECTIONS

What3words///rezoning.metals.blank

SITUATION

Nottingham Park is conveniently situated on the edge of Nottingham village. This exciting development is designed around green open spaces, tree lined avenues, woodland play area and walkways. A good range of amenities can be found within approximately 1 mile including a general store, petrol station, florist, veterinary clinic, supermarket and sport centre, all located on Dorchester Road. There are also both primary and secondary schools close by. Weymouth town centre can be found within approximately 2 miles and offers a comprehensive range of shops, marina and picturesque harbour, blue flag sandy beach and a range of recreational and cultural facilities. The area also provides the opportunity to enjoy a range of sailing and water sports activities, beaches and walks along the World Heritage Jurassic. There is a mainline rail station at Upwey, approximately $\frac{3}{4}$ of a mile from the property which provides rail links to London Waterloo and Bristol Temple Meads.

SERVICES

Mains gas, electric, water and drainage. Gas fired central heating system.

Local Authority Dorset Council - Tel: 01305 251010

MATERIAL INFORMATION

Council tax band – Banding TBC.

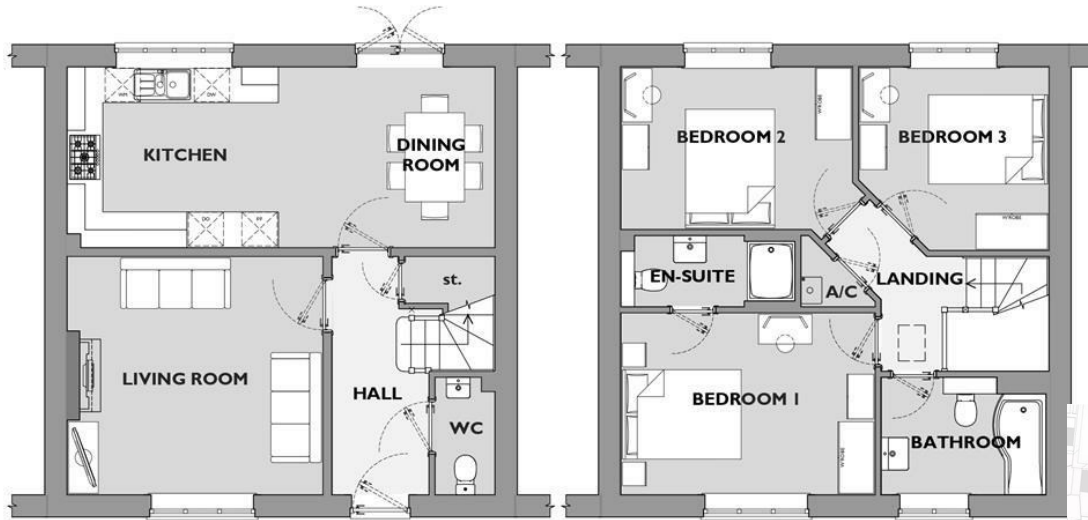
Predicted EPC band - B

Estate management charge £206.38 per annum

The property will include a NHBC 10-year warranty



Energy Efficiency Rating		
Very energy efficient - lower running costs	Current	Potential
(12 plus) A		
(11-10) B	86	86
(9-8) C		
(7-6) D		
(5-4) E		
(3-2) F		
(1-0) G		
Not energy efficient - higher running costs		
England & Wales	EU Directive 2002/91/EC	



GROUND FLOOR PLAN

FIRST FLOOR PLAN

PLOT 140

THREE BEDROOM HOME

FIRST FLOOR

Bedroom 1
4.27 x 3.06m (14' x 10'1ft max)

Bedroom 2
3.89 x 2.73m (12'9 x 9ft max)
(Dimensions excluding door recess)

Bedroom 3
3.2 x 3.08m (10'6 x 10'2ft)
(Dimensions excluding door recess)



NOTTINGHAM PARK WEYMOUTH
SECTIONS 1, 2 & 3
Poundbury/pgs/04.08.25rev



01305 756989

weymouth@symondsandsampson.co.uk
Symonds & Sampson LLP
Arch Point House, 7 Queen Mother Square,
Poundbury, Dorset DT1 3BY



Important Notice: Symonds & Sampson LLP and their Clients give notice that: 1. They have no authority to make or give any representations or warranties in relation to the property. These particulars do not form part of any offer or contract and must not be relied upon as statements or representations of fact. 2. Any areas, measurements or distances are approximate. The text, photographs and plans are for guidance only and are not necessarily comprehensive. It should not be assumed that the properties have all necessary planning, building regulation or other consents and Symonds and Sampson LLP have not tested any services, equipment or facilities. 3. We have not made any investigation into the existence or otherwise of any issues concerning pollution of the land, air or water contamination and the purchaser is responsible for making his/her own enquiries in this regard. 4. The property is sold subject to and with the benefit of all existing wayleaves, easements and rights of way whether public or private, specifically mentioned or not. The vendors shall not be required to define any such rights, privileges or advantages.

SALES | LETTINGS | AUCTIONS | FARMS & LAND | COMMERCIAL | NEW HOMES | PLANNING & DEVELOPMENT