

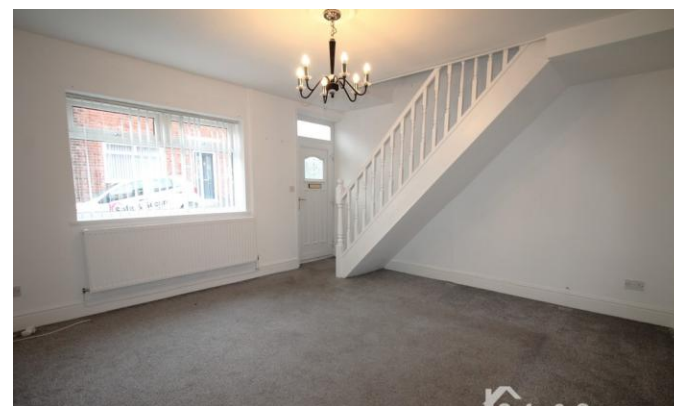


**15 Prospect Street**

Chester Le Street  
County Durham  
DH3 3TQ

**£105,000**  
**Freehold**

Mid Terraced House  
Two Bedrooms  
Gas Central Heating & Double Glazing  
Close to All Local Amenities  
Vacant Possession  
Viewings Recommended





Safe and Secure welcome to the market this deceptively spacious Two Bedroom Mid-Terraced House situated on Prospect Street, Chester-Le-Street, the property is located directly within access of all local amenities and public transport links including Train.

The newly decorated property briefly comprises of: a lounge, kitchen/diner, two spacious bedrooms, family bathroom and yard to rear.

Viewings recommended.

### LOUNGE

16' 4" x 14' 4" (5.00m x 4.37m) Double glazed entrance door, staircase to first floor, electric fire, radiator, telephone point, television point, radiator and double glazed window to front.

### KITCHEN/DINER

15' 5" x 9' 7" (4.72m x 2.94m) Part tiled walls, fitted wall and base units, work surfaces, 1 1/2 bowl sink and drainer unit, integrated electric oven, integrated gas hob, space for washing machine, combination boiler, radiator, double glazed window to rear and double glazed door to rear.

### FIRST FLOOR LANDING

Access to loft space.

### BEDROOM 1

12' 11" x 14' 5" (3.96m x 4.40m) Double glazed window to front, fitted wardrobes, television point and radiator.





## BEDROOM 2

7' 10" x 9' 8" (2.40m x 2.95m) Double glazed window to rear, telephone point and radiator.

## BATHROOM

Tiled walls, white three piece suite comprising of a panelled bath with shower over, pedestal wash hand basin, low level WC, radiator, extractor fan and double glazed window to rear.

## REAR YARD

Mainly paved area enclosed by fenced and brick boundaries with gated access.



**Local Authority**  
**Council Tax Band**  
**EPC Rating**

Durham County Council

A

C

**Houghton le Spring**

24-25 Westbourne Terrace  
Houghton Le Spring  
Tyne And Wear  
DH4 4QT

**Contact**

0191 3854477  
info@safeandsecureproperties.c  
o.uk  
safeandsecureproperties.co.uk

**Agents Note:** Whilst every care has been taken to prepare these particulars, they are for guidance purposes only. All measurements are approximate and are for general guidance purposes only and whilst every care has been taken to ensure their accuracy, they should not be relied upon and potential buyers/tenants are advised to recheck the measurements.