



**Guide Price**  
**£250,000**

**Freehold**

3x  1x  1x 

**Lime Grove,  
Portsmouth, Hampshire,  
PO6**

**OVER 60?**

Secure this property  
for up to **59% less!**

**cubitt & west**  
Helping you move forwards



## Main features

- Being sold chain free
- Garage to the rear
- Ground floor cloakroom and first floor bathroom
- Perfect for first time buyers or investors
- Some updating required throughout
- Close to local transport links

## Accommodation

### GROUND FLOOR

Entrance Hallway

Cloakroom

Lounge: 18'9 x 16'1 (5.72m x 4.91m)

Kitchen: 9'3 x 9'2 (2.82m x 2.80m)

### FIRST FLOOR

Landing

Bedroom 1: 11'6 x 10'2 (3.51m x 3.10m)

Bedroom 2: 10'1 x 9'3 (3.08m x 2.82m)

Bedroom 3: 7'9 x 7'7 (2.36m x 2.31m)

Bathroom: 6'2 x 6'1 (1.88m x 1.86m)

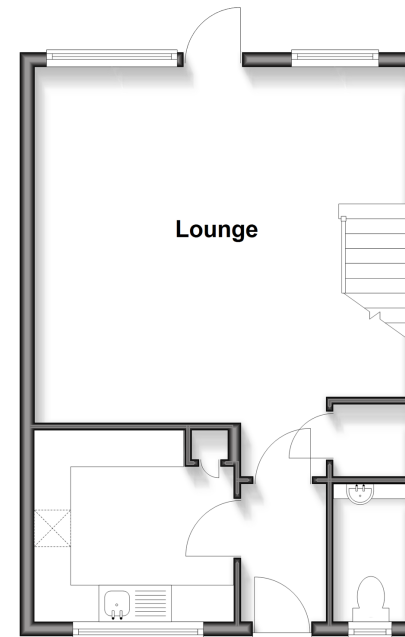
### OUTSIDE

Garage

Rear Garden

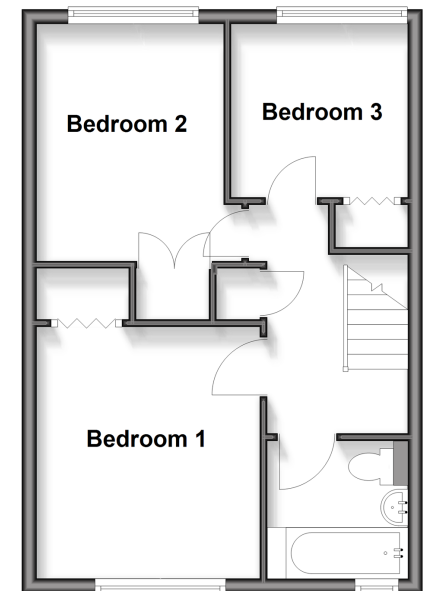
### Ground Floor

Approx. 38.9 sq. metres (418.6 sq. feet)



### First Floor

Approx. 38.9 sq. metres (418.6 sq. feet)



Call Portsmouth - 023 9266 1213 ■ [cubittandwest.co.uk](http://cubittandwest.co.uk)

- A private rental licensing scheme applies to some properties in this area, please check with the Local Authority before proceeding
- Legal advice should be taken to verify fixtures/fittings, planning, alterations and/or lease details
- Appliances & services are untested, dimensions are approximate and floor plans are not to scale
- Through a Homewise Home For Life Plan people aged 60+ can secure this property for up to 59% less, by purchasing a Lifetime Lease



41635172/20260310/MO1/JG