



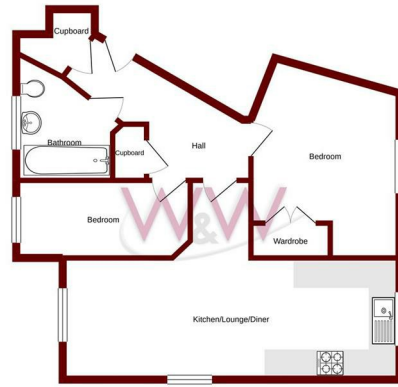
Elsanta Crescent | | Fareham | PO14 4FS

£1,150 PCM





Ground Floor
619 sq.ft. (57.5 sq.m.) approx.



TOTAL FLOOR AREA: 619 sq.ft. (57.5 sq.m.) approx.
Walker Waterer are not liable for errors in the accuracy of the floor plan or the measurements of the property. The floor plan is for information only and does not constitute an offer of any property. The floor plan is subject to change without notice.

| Energy Efficiency Rating | | Current | Potential |
|---|-------------------------|---------|-----------|
| Very energy efficient - lower running costs | | | |
| (92 plus) A | | | |
| (81-91) B | | | |
| (69-80) C | | | |
| (55-68) D | | | |
| (39-54) E | | | |
| (21-38) F | | | |
| (1-20) G | | | |
| Not energy efficient - higher running costs | | | |
| England & Wales | EU Directive 2002/91/EC | 80 | 80 |



Description

Walker & Waterer are delighted to offer to let this two bed apartment enjoying the privacy of the top floor & a modern triple aspect open plan living space. The home also boasts a loft space as well as off road parking. The property is available from mid June 2026.

Elsanta Crescent is situated in the ever popular location of Titchfield Common the local shops and amenities of Titchfield & Locks Heath are both less than 2 miles away, while the local pub is just a short stroll. Transport links are easily accessible including A27 & M27. Edit | Delete

Key features

- Modern Top Floor Apartment
- 2 Bedrooms
- Allocated parking
- Available Mid June 2026
- Triple Aspect Open Plan Living Space
- Modern Kitchen
- Communal Gardens



H3 Whiteley Shopping Centre
Whiteley Way
Whiteley
Hants
PO15 7PD
01489 580800
pm@walkerwaterer.co.uk
www.walkerwaterer.co.uk