

Head Office:
Dixon Kelley Estate Agents
1 Penn Court
Station Road, West Moors
Dorset. BH22 0JJ

Telephone: 01202 877511

DORSET PARK HOMES

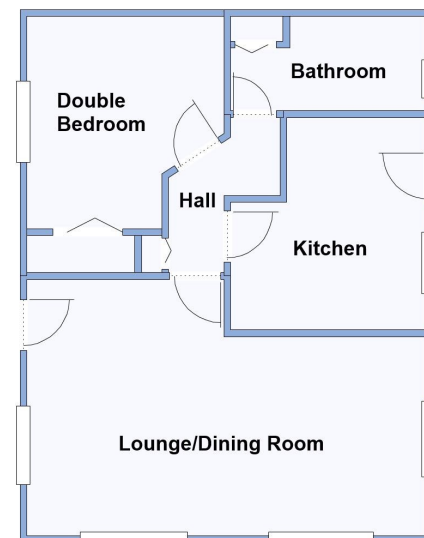
DRAFT

www.dorsetparkhomes.com

65 Hillbury Park, Hillbury Road, Alderholt, Fordingbridge. SP6 3BW



Delightful Twin Unit Park Home



This drawing has been prepared for diagrammatic purpose only. Not to scale.

1-Bedroom Park Home - approx 26' x 20'

Accommodation & approximate room dimensions:

- Wessex 'Dorset' Park Home circa 1998
- Hall: Cloaks cupboard.
- Lounge/Dining Room: approx 19'6" x 12'6" max. Feature fireplace. Bay windows.
- Kitchen: approx 10'4" x 9'6". Range of floor and wall cupboards. Built-in oven, hob & cooker hood. Space for fridge/freezer & washing machine. Combination gas boiler. Door to garden.
- Double Bedroom: approx 10'4" x 9'4" Plus fitted wardrobes. Bay window.
- Bathroom: Panelled bath with mixer tap & shower attachment with screen fitted, wash basin & WC. Heated towel rail.
- Gas Central Heating (system untested)
- PVCu Double-Glazing
- New Carpets Throughout (to be fitted)
- Private Patio Garden with Metal shed.
- Parking on Plot for 2 cars
- Age Restriction 45+ Pets Considered
- Popular Residential Park in semi-rural location near to local amenities and within a short drive to Fordingbridge town centre.

'Pet Friendly' Park



Kitchen



Lounge/Dining Room



Parking on Plot



Private Garden

Price: £98,000

VIEWING STRICTLY BY APPOINTMENT WITH THE VENDOR'S AGENT Dorset Park Homes 01202 877511

IMPORTANT NOTE: These particulars are believed to be correct but their accuracy is not guaranteed. They do not form part of any contract. Nothing in these particulars shall be deemed to be a statement that the property is in good structural condition or otherwise, nor that any of the services, appliances, equipment or facilities are in good working order or have been tested. Purchasers should satisfy themselves on such matters prior to purchase. Ref.W05159

Pitch Fee: approx £288.29 per month
Subject to Annual Review
Council Tax Band: 'A' Tenure: 1983 Mobile Homes Act Agreement

The recommended specialist in Park Home sales
Partner: Simon Dixon

