



Ericson Close, SW18

£415,000

Dexters



Ericson Close, SW18

Set within a quiet residential development, this well-presented one-bedroom ground floor apartment offers a bright and practical layout. The property features a fully fitted integrated kitchen with underfloor heating and breakfast bar as well as a separate lounge with French doors, a double bedroom with an inbuilt double wardrobe and a newly renovated bathroom. The flat further benefit's from two off street parking spaces.

The bedroom is well-proportioned, while the bathroom is neatly arranged off the central hallway. To the rear, the property benefits from direct access to a private patio garden, providing a pleasant outdoor space for relaxing or entertaining.

Ericson Close is conveniently located for the amenities of Wandsworth, with a variety of shops, cafés and restaurants nearby. Excellent transport links include Wandsworth Town station (National Rail) and East Putney Underground station (District Line), offering easy access into Central London.

Features

519.9 sq. ft

Chain Free

Large private garden

Two parking spaces

Own Front Door

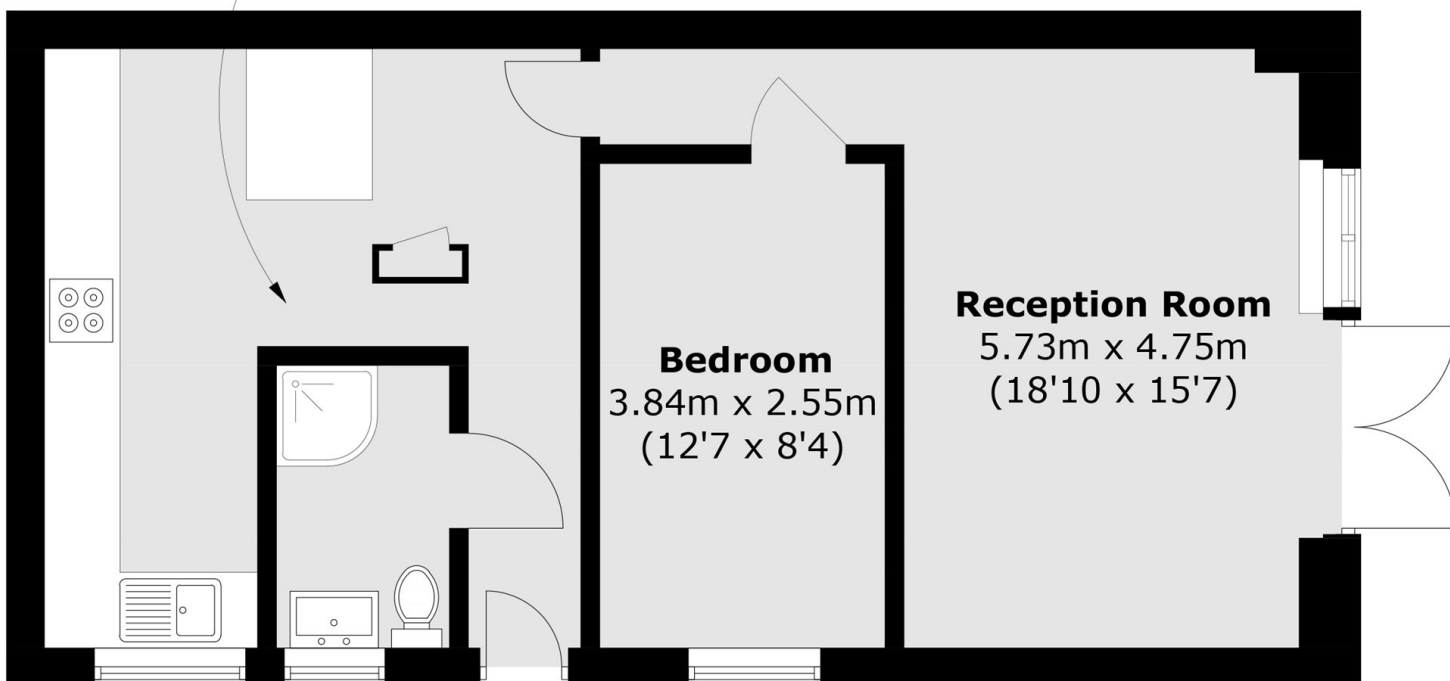
Large kitchen with breakfast bar





Ericsson Close, London, SW18

**Kitchen /
Dining Room**
4.75m x 4.38m
(15'7 x 14'4)



Total area (approx.): 48.3 sq. m (519.9 sq. ft)

Dexters

Putney
176 Putney High Street
London
SW15 1RS
Sales
020 8789 9999

Energy Rating: C. We aim to make our particulars both accurate and reliable. However they are not guaranteed; nor do they form part of an offer or contract. If you require clarification on any points then please contact us, especially if you're traveling some distance to view. Please note that appliances and heating systems have not been tested and therefore no warranties can be given as to their good working order.

 **RICS** | Regulated
Estate Agent
and Letting Agent

dexters.co.uk