



Norwich Street, Rochdale, OL11

£1,285 Per Month

Norwich Green is a development of 70 properties backing onto the Rochdale Canal, surrounded by amenities and transport links.

The Ellesmere is a stunning home built with your needs in mind. Downstairs, there is a generous living room, hallway and WC. The rear of the property has a magnificent living/kitchen area with a range of contemporary fitted units with integrated appliances. The room has French windows opening onto and overlooking the rear garden as well as a series of skylights which flood the room with light – an ideal space for both family time and entertaining.

Upstairs there is a spacious family bathroom complete with a bath and shower, a master bedroom with fitted, mirrored wardrobes and two further well-proportioned bedrooms. At the top of the stairs you will also find a handy store cupboard.

In the surrounding vicinity of the site are a range of shops including the Rochdale Central Retail Park as well as an Iceland. Leisure activities are within easy reach whether that's the Kingsway Park Sports Centre, or the Odeon cinema, offering a range of activities for both sport and recreation.

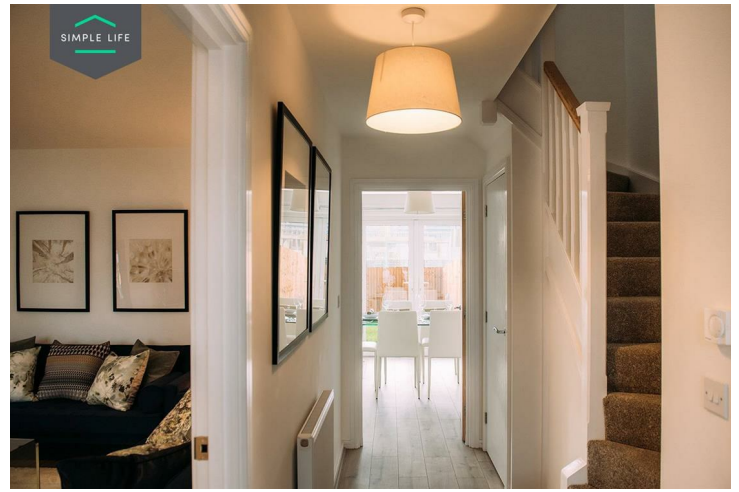
In terms of education, Norwich Green is well placed to access high quality schools. There are 23 Ofsted 'Good' rated primary schools within 3 miles, and a further 16 Good or Outstanding secondaries within 5, meaning your family has the space to grow from your new home.

From the development, Rochdale Station and Tram Stop are less than 5 minutes' walk away, opening up access to Manchester City Centre and the wider area.

To visit the site, postcode OL11 1LP brings you to Norwich Street with the site at the end.

Deposit £1480
Holding Deposit £290
Council Tax B
Unfurnished
Available 11th September 2026





Key Features

- Private driveway
- Fitted wardrobes to master bedroom
- Washing/drying machine
- Light wash wood effect flooring
- Private back garden with patio
- Security alarm system
- Integrated kitchen appliances
- Modern, white kitchen units
- Light grey carpets in the bedrooms and stairs
- White blinds in bedrooms

Location

