



RAVENSLEA ROAD, SW12

£5,500 PCM

- Bespoke kitchen
- Five bedrooms
- Two bathrooms
- Utility room
- Garden
- Energy rating: D





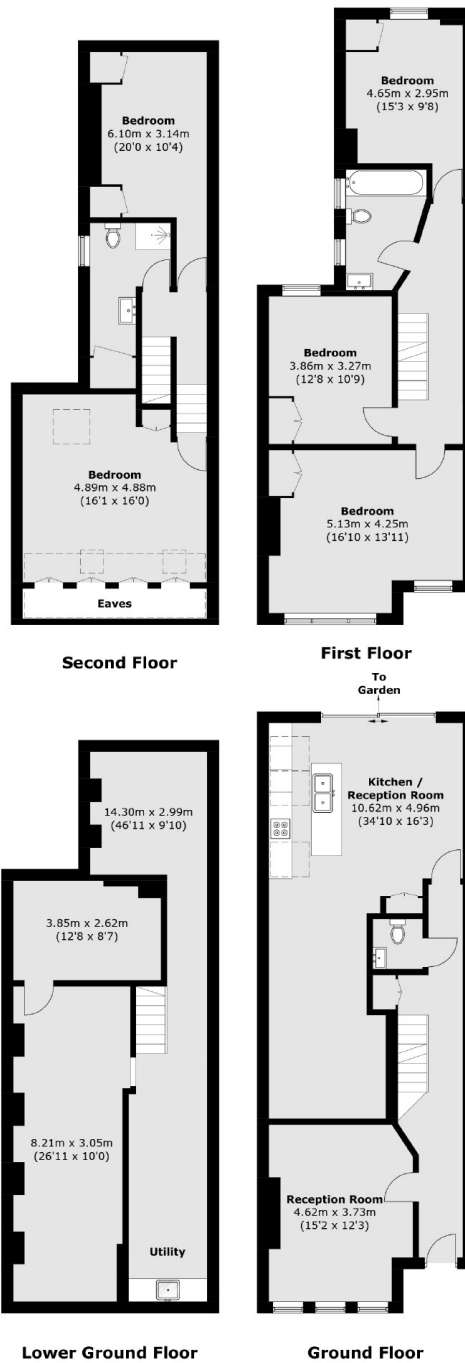
ABOUT THE HOME

Moments away from Wandsworth Common, this beautiful five bedroom family home is located on one of the most sought-after roads. Set over four floors this property has been finished to a high specification and offers a spacious kitchen breakfast room with bi-folding doors leading out to the garden.

Situated between Wandsworth Common and Central Balham, Ravenslea Road is close to a number of bars, boutiques and the green open spaces of Wandsworth Common.







Total area (approx.): 252.6 sq. m (2,718.9 sq. ft)

JACKSONS BALHAM

8-11 Balham Station Road,
London, SW12 9SG
Sales: 020 8675 6555
Lettings: 020 8675 6565

Energy Rating: D We aim to make our particulars both accurate and reliable. However they are not guaranteed; nor do they form part of an offer or contract. If you require clarification on any points then please contact us, especially if you're traveling some distance to view. Please note that appliances and heating systems have not been tested and therefore no warranties can be given as to their good working order.