



Harvest Way, Willow Farm, Choppington, NE62 5FB

Offers Over £150,000

Harpers POWERED BY **exp** UK
property people

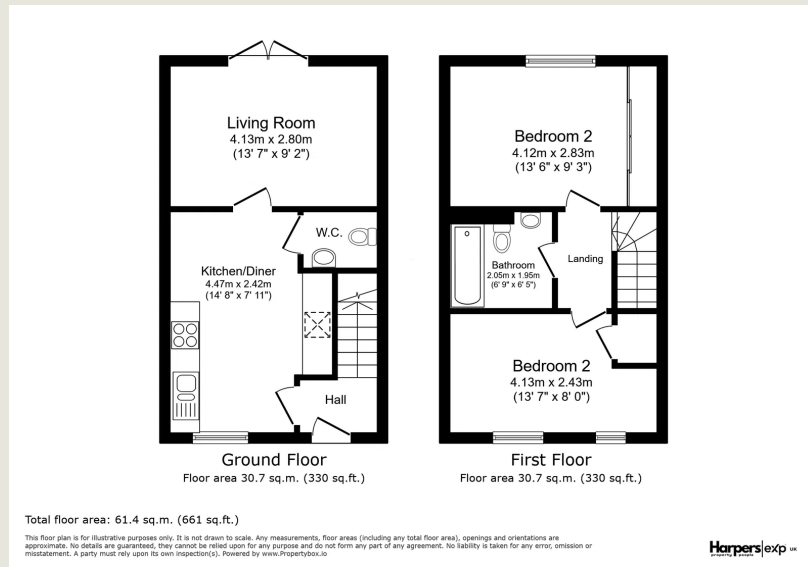
Bedrooms: 2 | Bathrooms: 1 | Receptions: 1

A beautifully presented two double bedroom modern home, ideally situated within the popular Willow Farm development, offering stylish, low-maintenance living. This attractive semi-detached property is perfect for a variety of buyers seeking comfort and convenience. The ground floor welcomes you with an attractive, well-appointed kitchen/breakfast room, providing a bright and functional space. Towards the rear, the living room offers a comfortable area, benefiting from direct access to the garden, creating a seamless indoor-outdoor feel. For added convenience, there is also a ground floor WC. Upstairs, you will find two generous double bedrooms, offering ample space and natural light. These are complemented by a modern three-piece family bathroom, designed with contemporary fixtures. Externally, the property boasts a desirable South-facing rear garden with gated side access, perfect for enjoying outdoor relaxation. To the front, a double driveway provides excellent off-street parking. Set in a popular residential location, this home combines practicality with modern living. Offered with a complete upper chain, this move-in-ready property presents a fantastic opportunity for a smooth onward move.

- Semi-Detached Home
- Modern Build
- Two Double Bedrooms
- Modern Three-Piece Bathroom & Ground Floor WC
- Attractive Well Appointed Kitchen/Breakfast Room
- Rear Aspect Living Room With Direct Garden Access
- South Facing Rear Garden With Gated Side Access
- Double Driveway
- Popular Residential Location







Harpers Property People

80 Windsor Gardens, Bedlington, NE22 5SY

07813 673 606

ali@harpersproperty.com

<https://harpersproperty.com>

Harpersexp POWERED BY **UK**
property people