

OVER 60?

Secure this property
for up to **59% less!**



Guide Price
£575,000
Freehold

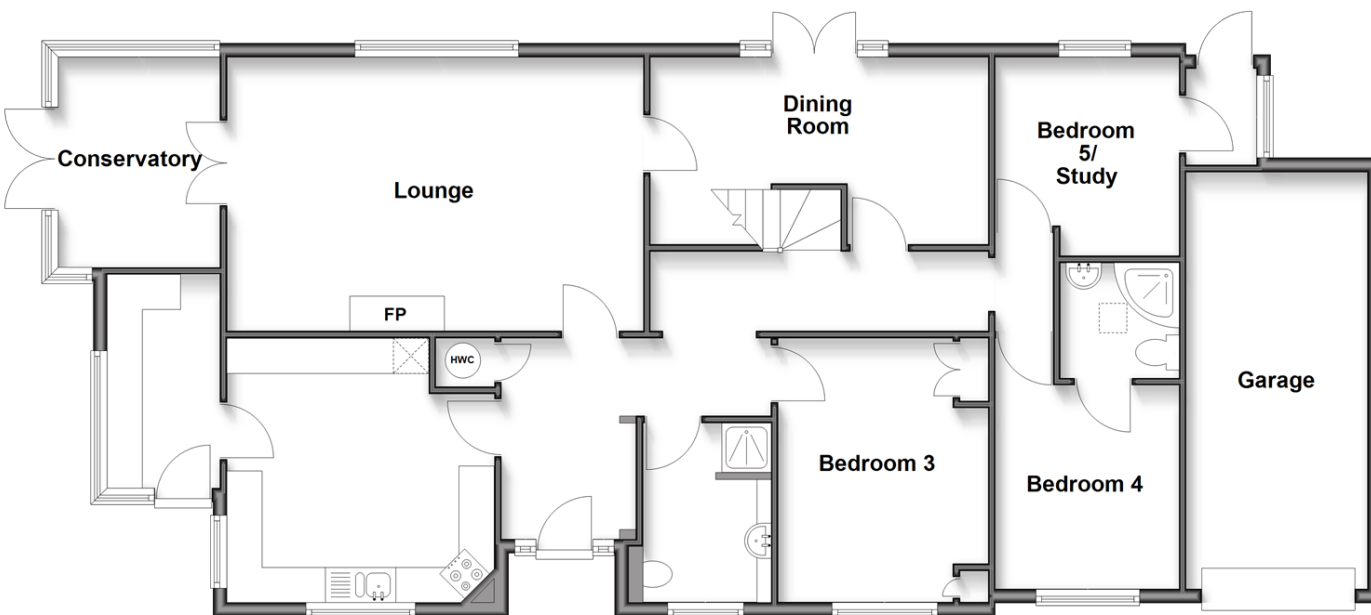
5x  3x  1x 

The Green, Woodchurch, Ashford, Kent,
TN26

Wards
Helping you move forwards

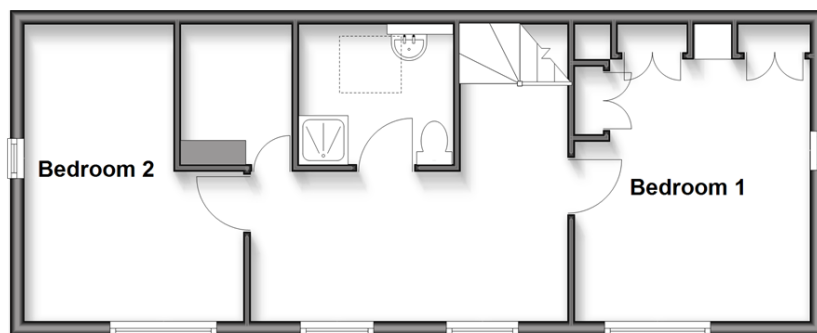
Ground Floor

Approx. 132.7 sq. metres (1428.4 sq. feet)



First Floor

Approx. 47.3 sq. metres (508.7 sq. feet)



Accommodation

GROUND FLOOR

Entrance Hall

Kitchen/Breakfast Room: 12'5 x 12'3 (3.79m x 3.74m)

Utility/Boot Room

Lounge: 19'5 x 13'0 (5.92m x 3.97m)

Conservatory: 10'1 x 7'3 (3.08m x 2.21m)

Dining Room: 15'9 x 9'1 (4.80m x 2.77m)

Bedroom 5/Study: 9'7 x 8'6 (2.92m x 2.59m)

Bedroom 4: 11'8 x 8'7 (3.56m x 2.62m)

En-Suite Shower Room

Bedroom 3: 12'2 x 9'11 (3.71m x 3.02m)

Shower Room 1

FIRST FLOOR

Landing/Reading Area

Bedroom 1: 14'2 x 11'1 (4.32m x 3.38m)

Shower Room 2

Bedroom 2: 14'1 x 10'3 (4.30m x 3.13m)

Storage

OUTSIDE

OUT BUILDING

Garage: 19'4 x 8'2 (5.90m x 2.49m)

Shed: 13'10 x 11'0 (4.22m x 3.36m)

Store: 9'2 x 5'7 (2.80m x 1.70m)

Driveway

Front Garden

Rear Garden



Main features

- Large Detached 5-bedroom house
- Potential to improve/modernise and create an annex
- Garage and off road parking
- Good size garden/plot with sizeable store/outbuilding
- Envious secluded location in the ever popular village of Woodchurch



Nearest Schools

Primary Schools: Woodchurch C of E Primary 0.2 miles, High Halden C of E Primary 3.0 miles, Hamstreet Primary 3.4 miles
Secondary Schools: Homewood School and Sixth Form Centre 3.5 miles, John Wallis C of E Academy, Ashford



Transport Information

Train Stations: Ham Street 3.5 miles, Appledore 3.5 miles, Pluckley 5.5 miles



Address

The Green, Woodchurch, Ashford, Kent, TN26



Directions

For directions to this property please contact us.



Call Tenterden Branch 01580 766002 ■ wardsofkent.co.uk



- Legal advice should be taken to verify fixtures/fittings, planning, alterations and/or lease details
- Appliances & services are untested, dimensions are approximate and floor plans are not to scale
- Through a Homewise Home For Life Plan people aged 60+ can secure this property for up to 59% less, by purchasing a Lifetime Lease.



12227399/20250807/CD/AQ