

7 Williams Terrace, Brynmenyn

£150,000 Freehold

Mid Terrace Property • Two Double Bedrooms • Well presented throughout, Perfect Buy For First Time Buyers • Within 1/4 Mile Of Bryngarw Country Park & Within 1/2 Mile Of Local Schools & Leisure Centre • Open Plan Spacious Home • Modern Bathroom • Easy Access To M4 Corridor, Ideal For Commuters • Loft Space • Situated In A Village Location • Call Today To Arrange Your Appointment

DanielMatthew
ESTATE AGENTS



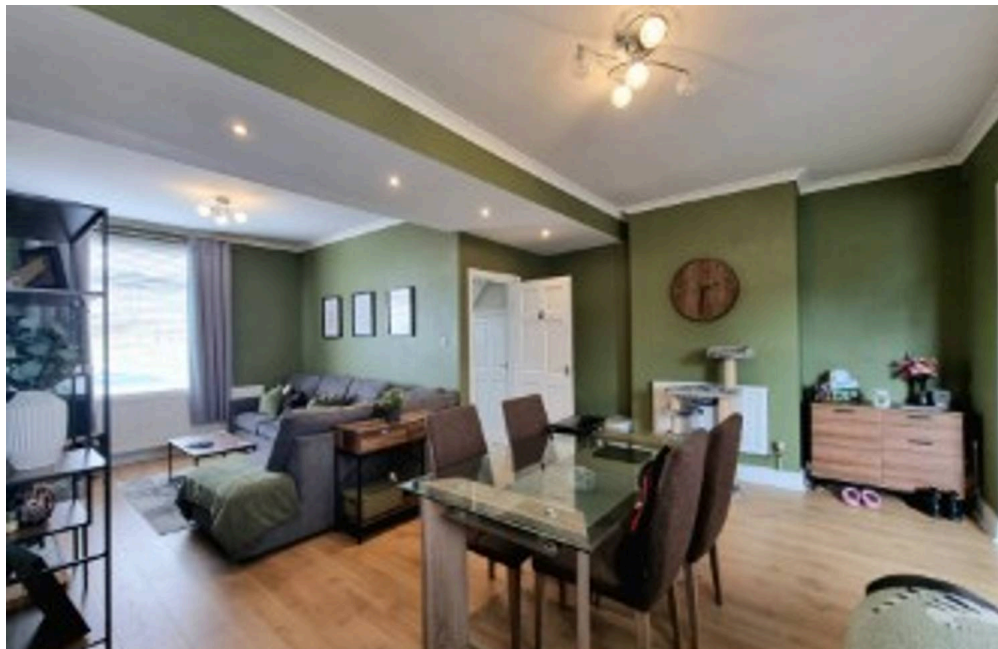
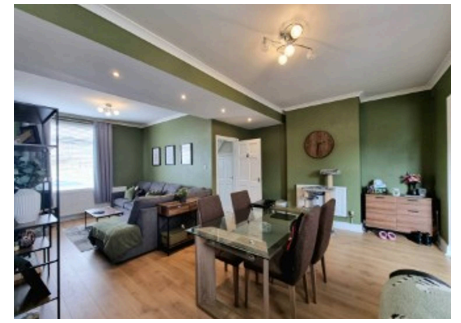
Immaculate two double bedroom mid-terrace with open plan living, modern bathroom, loft space, near Bryngarw Park, schools, leisure centre, and M4. Ideal for first time buyers.

Council Tax band: B

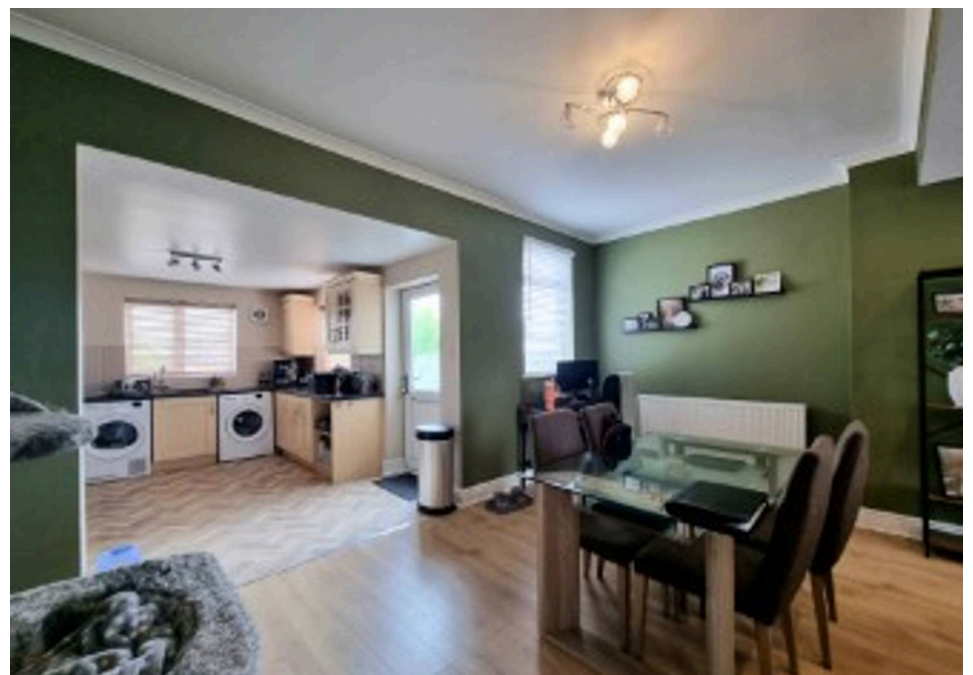
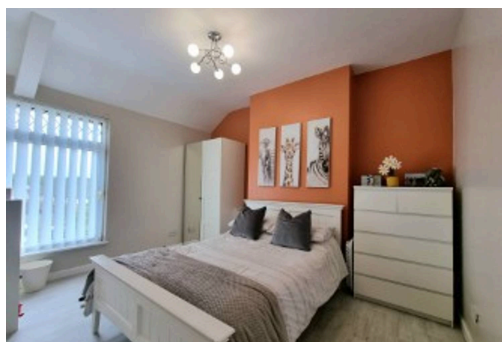
Tenure: Freehold

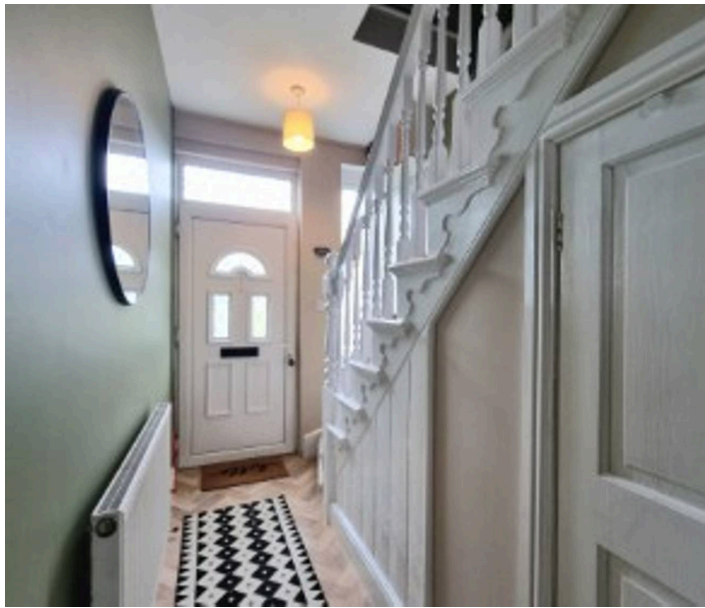
EPC Energy Efficiency Rating: D

EPC Environmental Impact Rating: E



- Mid Terrace Property
- Two Double Bedrooms
- Well presented throughout, Perfect Buy For First Time Buyers
- Within 1/4 Mile Of Bryngarw Country Park & Within 1/2 Mile Of Local Schools & Leisure Centre
- Open Plan Spacious Home
- Modern Bathroom
- Easy Access To M4 Corridor, Ideal For Commuters
- Loft Space
- Situated In A Village Location
- Call Today To Arrange Your Appointment





Hallway

Enter via UPVC double glazed obscured door leading into welcoming bright and airy entrance Hallway, plastered ceiling, plastered walls, staircase leading to first floor, understairs storage, radiator, door leading into;-

Open Plan Lounge/Diner

24' 4" x 17' 2" (7.42m x 5.23m)

A beautiful open plan Lounge/Diner comprising Two UPVC double glazed window to front and rear aspect, plastered ceiling with coving, plastered walls, laminate flooring, two radiators. Large spacious room ideal for entertaining family/friends. Opening into Kitchen.

Kitchen

13' 0" x 10' 8" (3.96m x 3.25m)

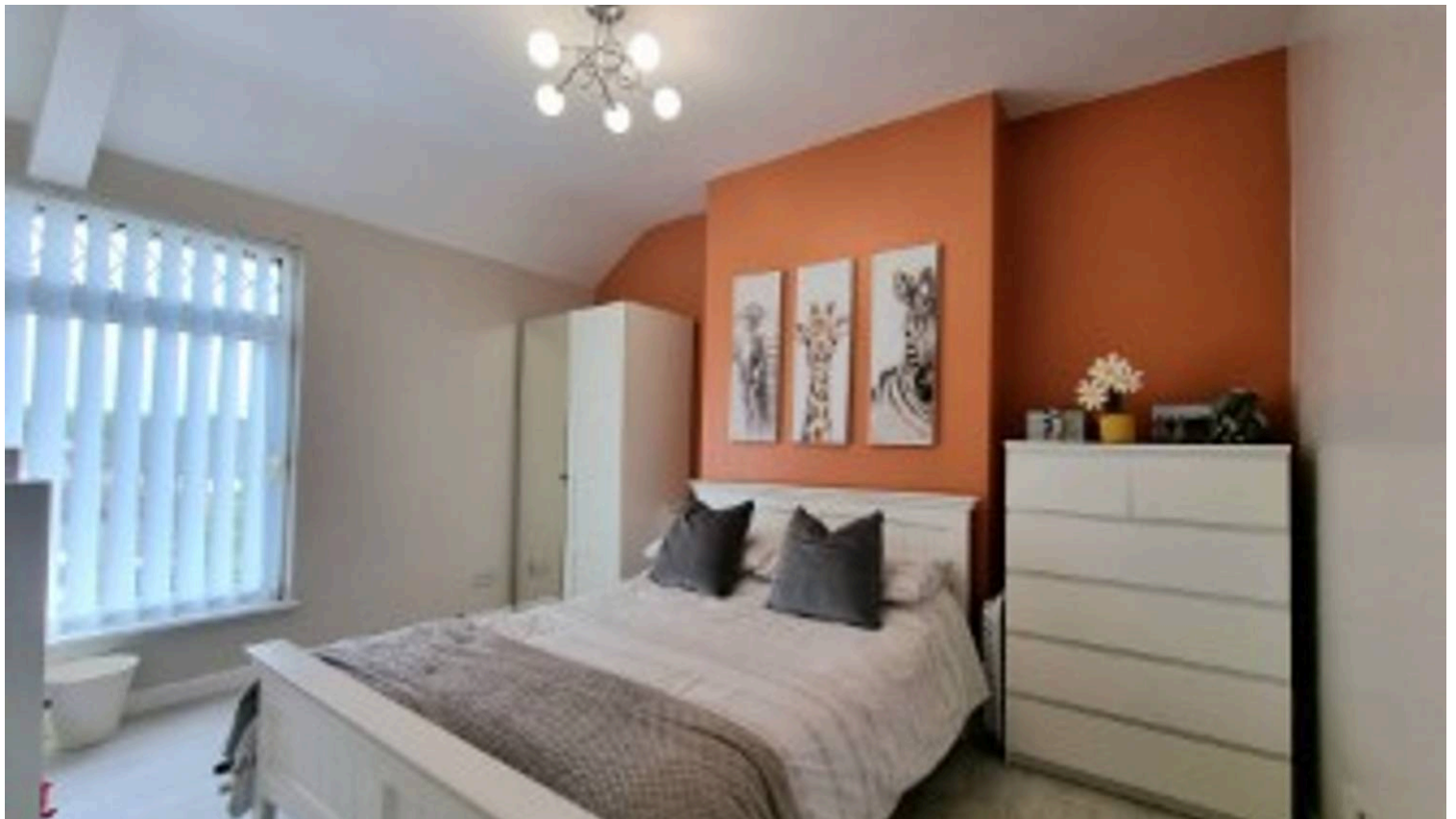
UPVC double glazed door and window to side aspect, leading into garden, plastered ceiling, partially plastered and tiled walls, vinyl flooring, a range of matching wall and base units with complimentary work surfaces, space for fridge/freezer and tumble dryer, plumbing for washing machine, composite one and a half sink with drainer and mixer tap.



Bedroom One

14' 2" x 10' 2" (4.32m x 3.10m)

UPVC double glazed window to front aspect, plastered ceiling, plastered walls, laminate flooring, radiator





Bedroom Two

12' 10" x 10' 2" (3.91m x 3.10m)

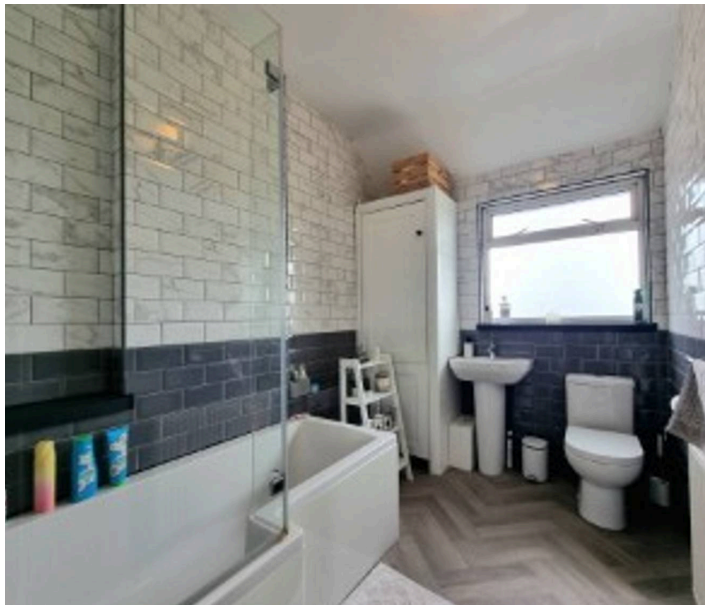
UPVC double glazed window to rear aspect, plastered ceiling, plastered walls, fitted carpet, radiator.

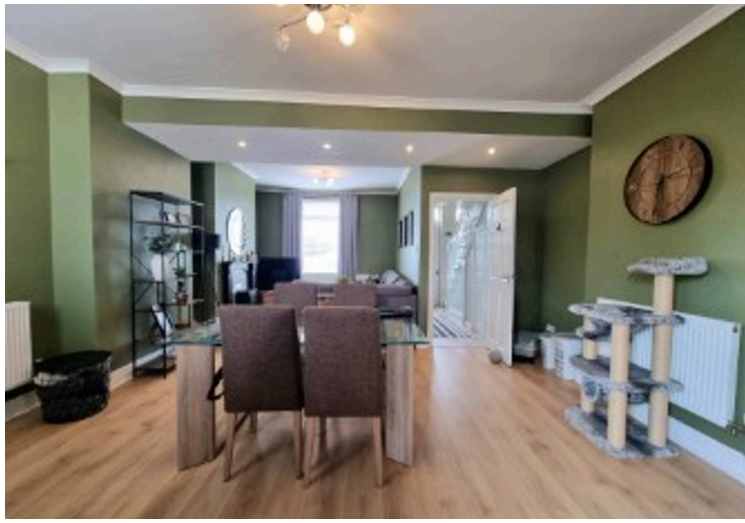
Bathroom

UPVC double glazed obscured window to rear aspect, plastered ceiling, tiled walls, vinyl flooring, three piece suite comprising low level WC, pedestal wash hand basin, panelled bath, radiator.

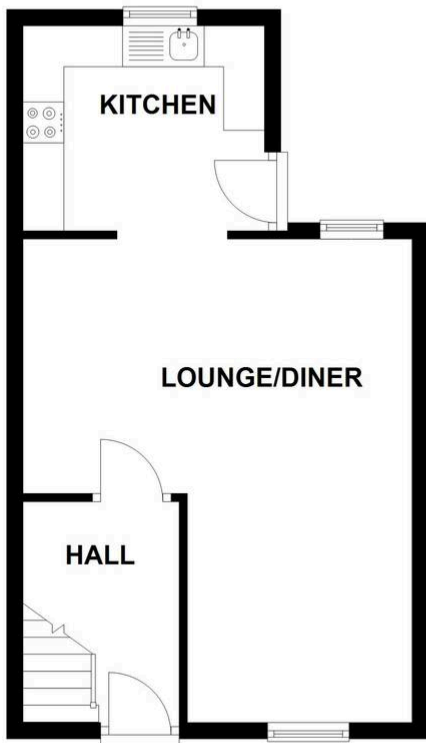
Loft Room

Velux window, plastered ceiling, plastered walls, fitted carpet.

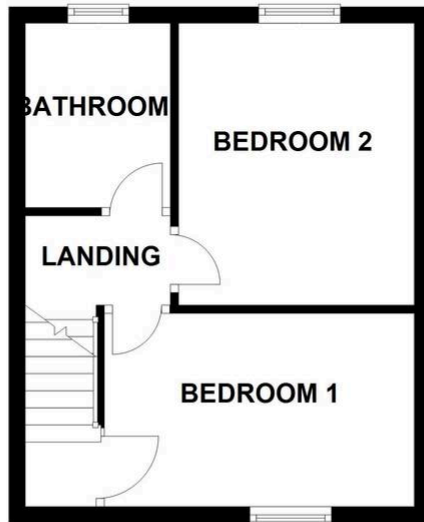




GROUND FLOOR



FIRST FLOOR



SECOND FLOOR

