

Brewhouse Yard, EC1V

£795 Per week

A large and unique two bedroom, two bathroom split level apartment with entrance hall, spacious living area with spiral staircase leading up to two double bedrooms, eat in modern kitchen and a balcony overlooking the iconic Brewery Square.

Brewhouse Yard is a secure development just off St Johns Street with Farringdon and Barbican Underground stations less than half a mile away.

Features

- Balcony
- Two bathrooms
- Two bathroom
- Split level
- 24 hour concierge
- Spiral staircase

Brewhouse Yard, London, EC1V

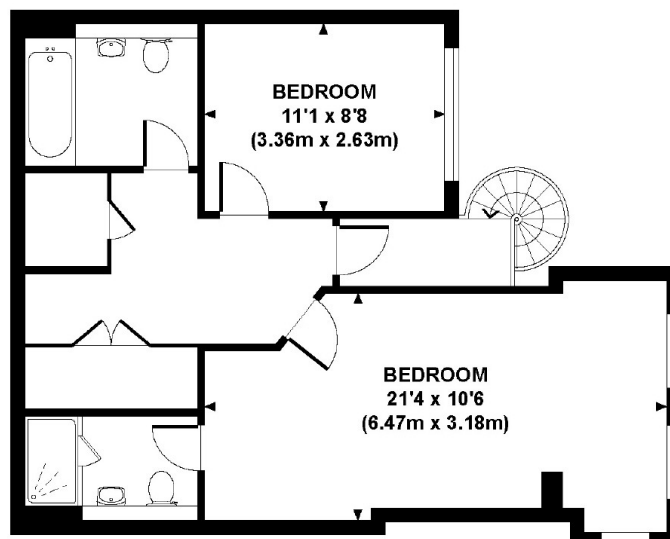
HORSESHOE COURT, BREWHOUSE YARD, EC1V

Approx. gross internal area

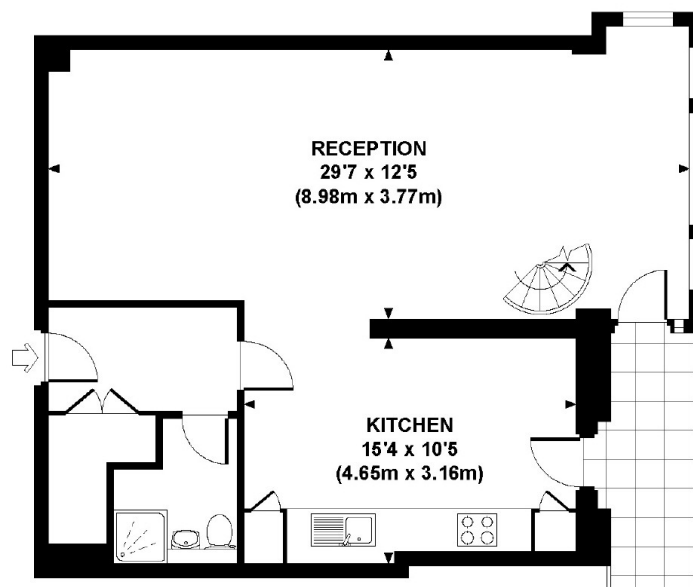
1193 Sq Ft. / 110.8 Sq M.

Representation of current layout.

Not to scale.



FIRST FLOOR



GROUND FLOOR