



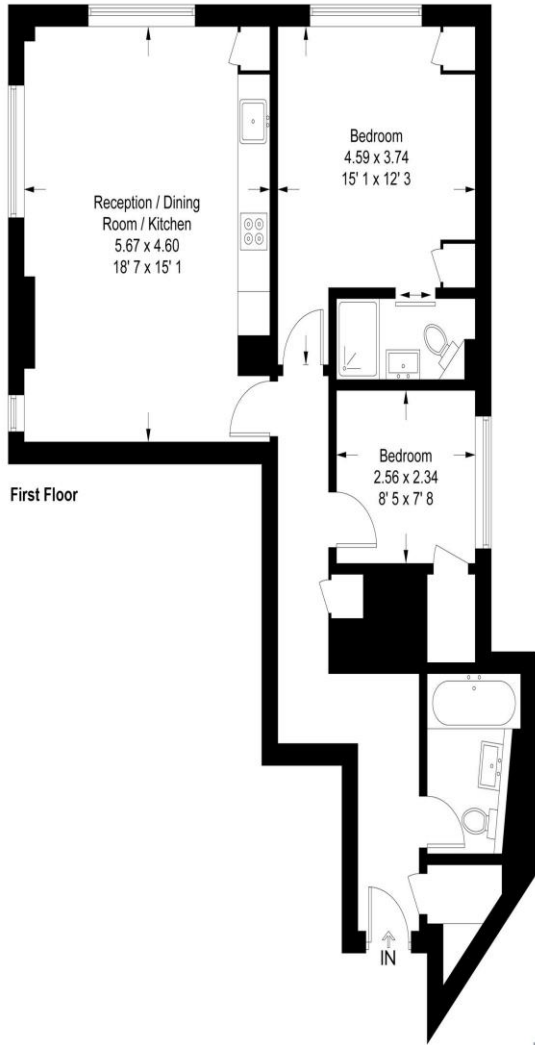
2 Bed Apartment
College Crescent
Swiss Cottage NW3

- Being sold via 'Secure Sale'
- Immediate 'Exchange of Contracts' available
- Open Plan Reception Room
- Directly next to tube station

Auction guide price of £500,000
Leasehold

Northways Parade

Approximate Gross Internal Area = 770 sq ft / 71.5 sq m



Energy Efficiency Rating		
	Current	Potential
<i>Very energy efficient - lower running costs</i>		
(92-100) A		
(81-91) B		
(69-80) C	72	79
(55-68) D		
(39-54) E		
(21-38) F		
(1-20) G		
<i>Not energy efficient - higher running costs</i>		
England, Scotland & Wales	EU Directive 2002/91/EC	

A bright and well presented two bedroom, two bathroom first floor apartment, ideally located within moments of London Underground Swiss Cottage station and a short walk from Regent's Park.

The property offers a spacious reception room with stylish tiled flooring and a fully integrated modern kitchen, creating an excellent entertaining and living space. Air-conditioning has been installed to both the principal bedroom and living area, providing added comfort throughout the year. Further benefits include double glazed windows, generous storage space, and two contemporary bathrooms, including an en-suite to the principal bedroom. An excellent opportunity for both owner occupiers and investors alike.

This plan is not to scale and must be used as layout guidance only. All measurements and areas are approximate and should not be relied upon to provide accurate information. This plan must not be relied upon when making property valuations, design considerations or any other significant financial decisions. We accept no responsibility or liability (whether in contract, tort or otherwise) in relation to any loss whatsoever arising from or in connection with any use of this plan or the adequacy, accuracy or completeness of it or any information within it.



ML Estates wish to advise prospective purchasers that we have not checked the services or appliances. These particulars have been prepared as a guide only, any floor-plan or map is for illustrative purposes only. ML Estates, for themselves and for the vendors or lessors of this property whose agents they are given notice that: the particulars have been produced in good faith; do not constitute any part of a contract; no person in the employment of ML Estates has any authority to make or give any representation of warranty in relation to this property.