

Hamilton Drive

Nottingham
NG7 1DF



Click for further information:-



Location



Gallery



Video



Contact



0115 841 1155



- Prestigious Park Estate location
- Easy access to Nottingham city centre, castle and train station
- Small development of only six apartments
- Ground floor position
- Spacious L-shaped lounge/dining room
- Separate modern fitted kitchen with appliances
- Two bedrooms
- Modern bathroom suite
- Communal garden
- Garage to Rear & Additional off-road parking space



0115 841 1155



Location



Gallery



Video



Contact

Hamilton Drive, Nottingham, NG7 1DF

Key Features

Located within the highly sought-after Park Estate, Hamilton Court offers modern living just a short distance from Nottingham's vibrant city centre, with its array of shops, bars, restaurants, historic castle and train station.

This modern ground floor apartment forms part of a small, purpose-built development of only six residences. The property features a communal and private entrance hall, leading to a generous L-shaped lounge and dining area, enhanced by windows that provide natural light. The separate kitchen is fitted with modern units and appliances. An inner hallway gives access to two well-proportioned bedrooms and a modern bathroom with suite.

Externally, a communal driveway leads to a single garage en bloc, positioned at the rear of the development, together with an off-road parking space.

Residents also enjoy use of a communal garden, contributing to the overall appeal of this delightful home.

These sales particulars have been prepared by FHP Living on the instruction of the vendor. Services, equipment and fittings mentioned in these particulars have NOT been tested, and as such, no warranties can be given. Prospective purchasers are advised to make their own enquiries regarding such matters. These sales particulars are produced in good faith and are not intended to form part of a contract. Whilst FHP Living have taken care in obtaining internal measurements, they should only be regarded as approximate.

Purchaser information - Under the Protecting Against Money Laundering and the Proceeds of Crime Act 2002, FHP Living require any successful purchasers proceeding with a purchase to provide two forms of identification i.e. passport or photocard driving license and a recent utility bill. This evidence will be required prior to FHP Living instructing solicitors in the purchase or the sale of a property.





0115 841 1155



Location



Gallery



Video



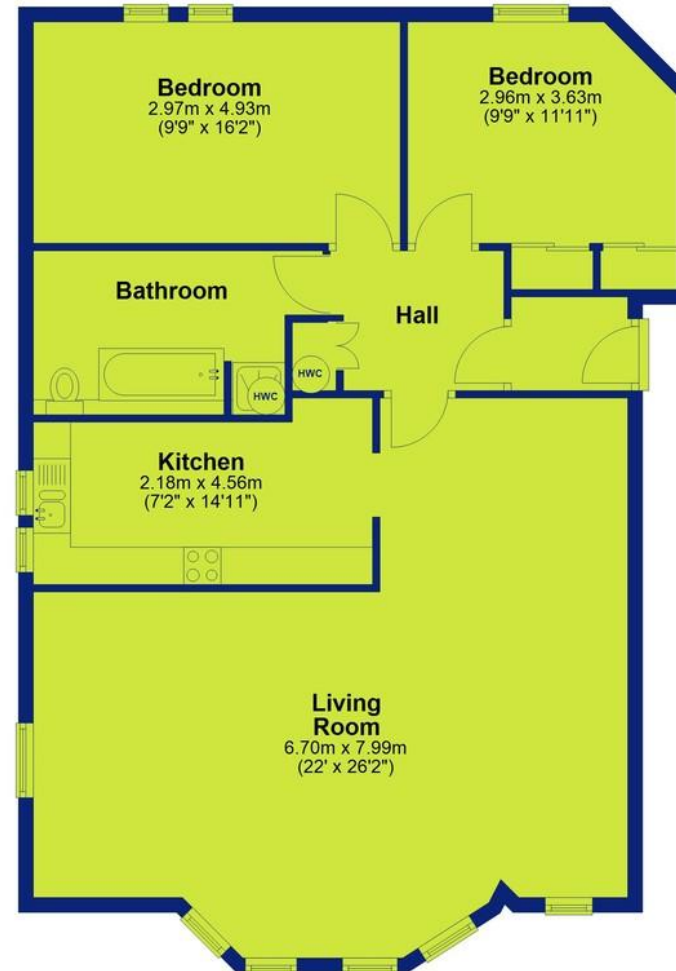
Contact

Hamilton Drive, Nottingham, NG7 1DF



Ground Floor

Approx. 98.3 sq. metres (1057.8 sq. feet)



Total area: approx. 98.3 sq. metres (1057.8 sq. feet)



0115 841 1155



Location



Gallery



Video



Contact



Hamilton Drive, Nottingham, NG7 1DF



Interested in this home?

Contact the FHP Living Team on 0115 841 1155

23 Bridgford Road
West Bridgford
Nottingham
NG2 6AU

1 Weekday Cross
The Lace Market
Nottingham
NG1 2GB

These sales particulars have been prepared by FHP Living on the instruction of the vendor. Services, equipment and fittings mentioned in these particulars have NOT been tested, and as such, no warranties can be given. Prospective purchasers are advised to make their own enquiries regarding such matters. These sales particulars are produced in good faith and are not intended to form part of a contract. Whilst FHP Living have taken care in obtaining internal measurements, they should only be regarded as approximate.

Purchaser information - Under the Protecting Against Money Laundering and the Proceeds of Crime Act 2002, FHP Living require any successful purchasers proceeding with a purchase to provide two forms of identification i.e. passport or photocard driving license and a recent utility bill. This evidence will be required prior to FHP Living instructing solicitors in the purchase or the sale of a property.