

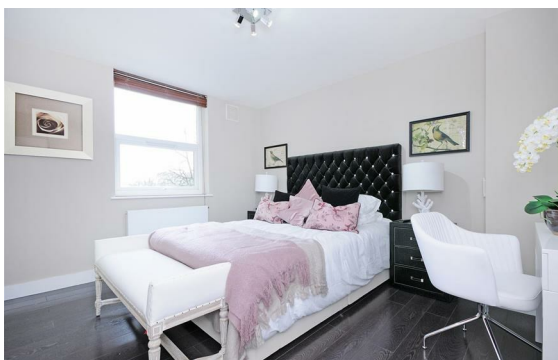


St. Johns Wood Park, St John's wood, London, NW8

Rent £1,300 Per Month

3 Bed | 2 Bath | 1 Reception

Please call us on 020 7724 2233 or email us info@newingtonstates.com to book a viewing.



A beautifully presented three-bedroom apartment set on the second floor of the highly sought-after gated development of Boydell Court, perfectly positioned on the border of St John's Wood and Swiss Cottage.

Spanning approximately 1,198 sq ft, this bright and spacious home offers an excellent balance of comfort and functionality, featuring a generous reception and dining area ideal for entertaining, a fully fitted modern kitchen, separate study area, and elegant wooden flooring throughout. The property further comprises three well-proportioned double bedrooms with built-in wardrobes, two stylish bathrooms including an en-suite to the principal bedroom, and an additional guest WC.

Residents benefit from exceptional convenience and security with 24-hour concierge service, passenger lift, off-street parking, and heating and hot water included within the rent.

Energy Efficiency Rating: C

Agents Note: Whilst every care has been taken to prepare these particulars, they are for guidance purposes only. All measurements are approximate and are for general guidance purposes only and whilst every care has been taken to ensure their accuracy, they should not be relied upon and potential buyers/tenants are advised to recheck the measurements.

NEWINGTON
— ESTATES —

60 Upper Montagu Street

London

W1H 1SN

020 7724 2233

info@newingtonstates.com

<http://www.newingtonstates.com>