



## Portobello Road, W11

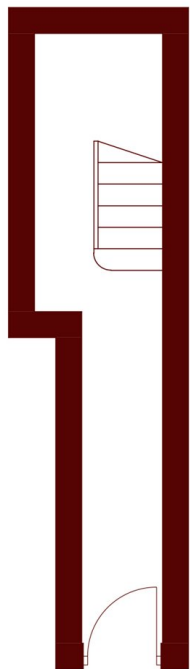
£995 per week (£4,311 pcm)



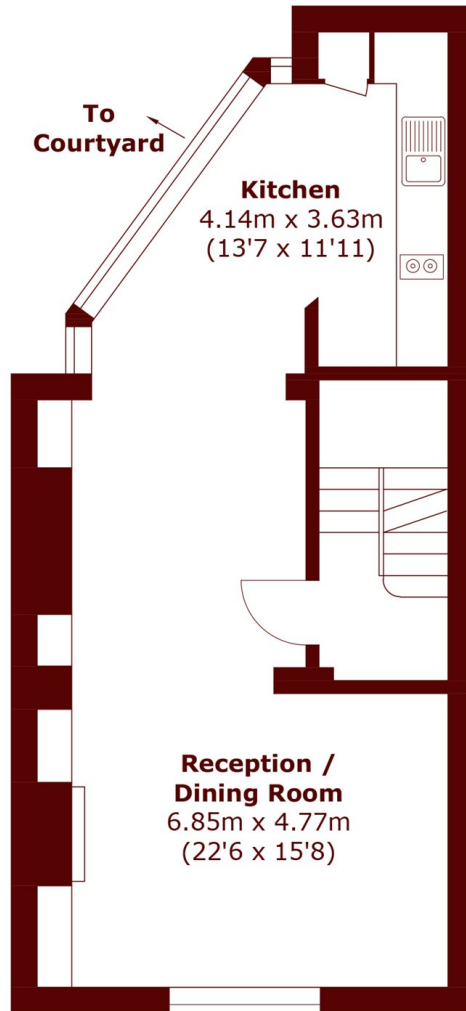
- Two Bedrooms
- Upper Maisonette

- Balcony
- Great Condition

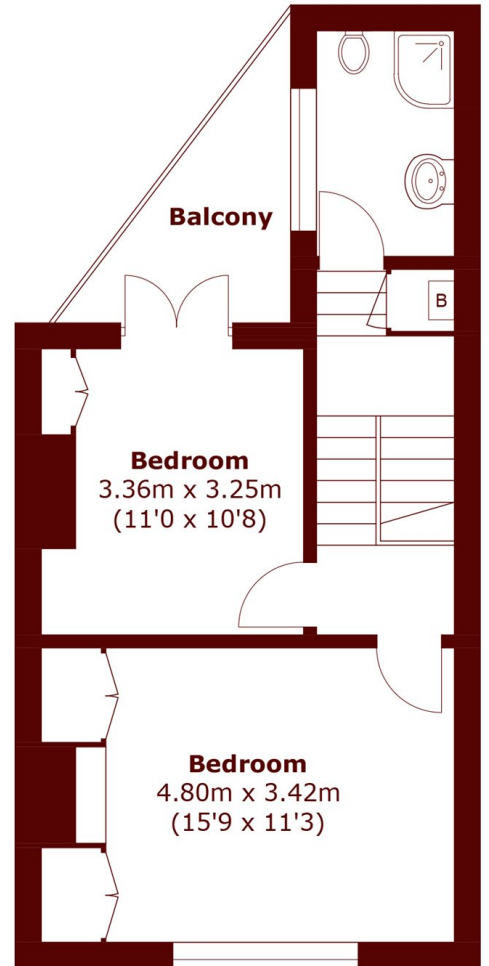
- Iconic Location
- Own Entrance



**Ground Floor**



**First Floor**



**Second Floor**

Total area (approx.): 93.6 sq. m (1,007.5 sq. ft)  
Balcony: 4.9 sq. m (52.7 sq. ft)

## Marsh & Parsons Notting Hill

2-6 Kensington Park Road,  
London, W11 3BU  
020 7313 2890