



Chertsey Road, Windlesham

£1,200 PCM



Chertsey Road, Windlesham, GU20 6ET

Spacious two bedroom flat situated above the shops in Windlesham therefore located in the centre of the village with easy access to all the local amenities.

FEATURES

- Stairs up to own front door
- Located in the heart of the village
- Selection of shops on your doorstep
- Gas central heating
- Double glazing

ACCOMODATION

- Living room
- Two bedrooms
- Modern fitted shower room
- Fitted kitchen

FURNISHED/UNFURNISHED

Unfurnished

AVAILABLE

Immediately

DEPOSIT PAYABLE

£1,384

EPC RATING

D

COUNCIL TAX

Surrey Heath Borough Council – Band C





Approximate Gross Internal Area
73.80 sq m / 794.37 sq ft

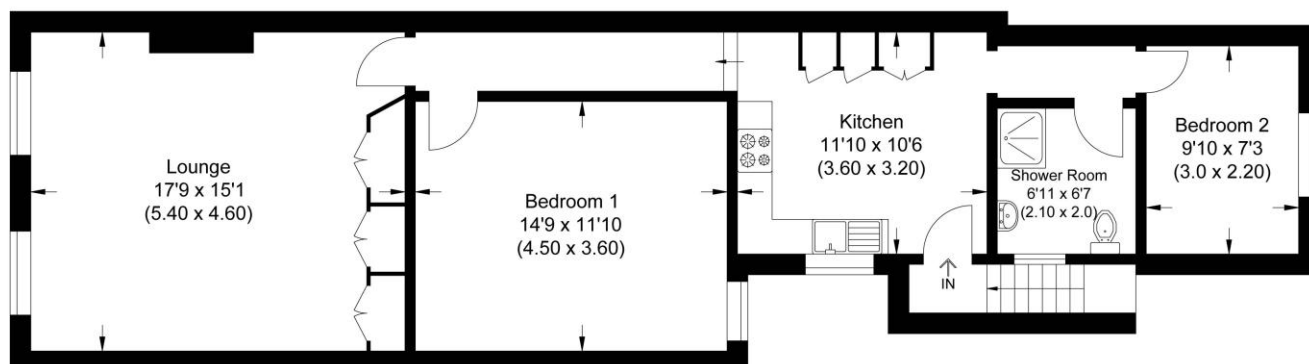


Illustration for identification purposes only, measurements are approximate, not to scale.

Disclaimer: We wish to inform prospective tenants that we have prepared these sales particulars as a general guide. We have not carried out a detailed survey, nor tested the services, appliances and specific fittings. Room sizes are approximate and rounded: they are taken between internal wall surfaces and therefore include cupboards / shelves, etc.

Postcode for sat nav: GU20 6ET



The Old Dairy, 7 Updown Hill, Windlesham, Surrey GU20 6AF
enquiries@newtonrowe.co.uk | 01276 986900