



Guide Price
£625,000

Freehold

4x  2x  2x 

**Maidstone Road,
Chatham, Kent, ME4**

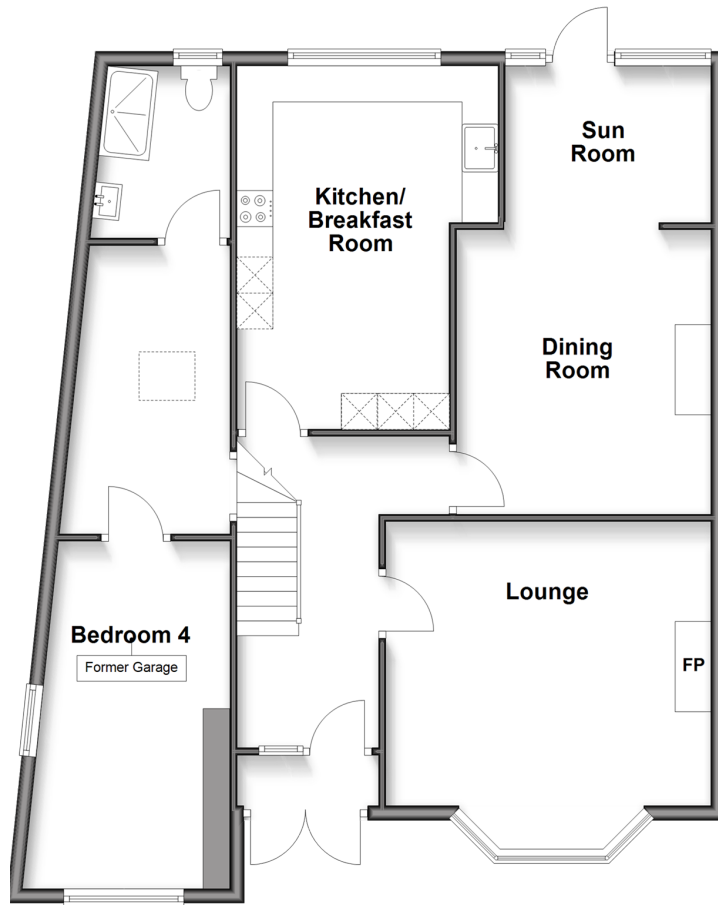
OVER 60?

Secure this property
for up to **59% less!**

Wards
Helping you move forwards

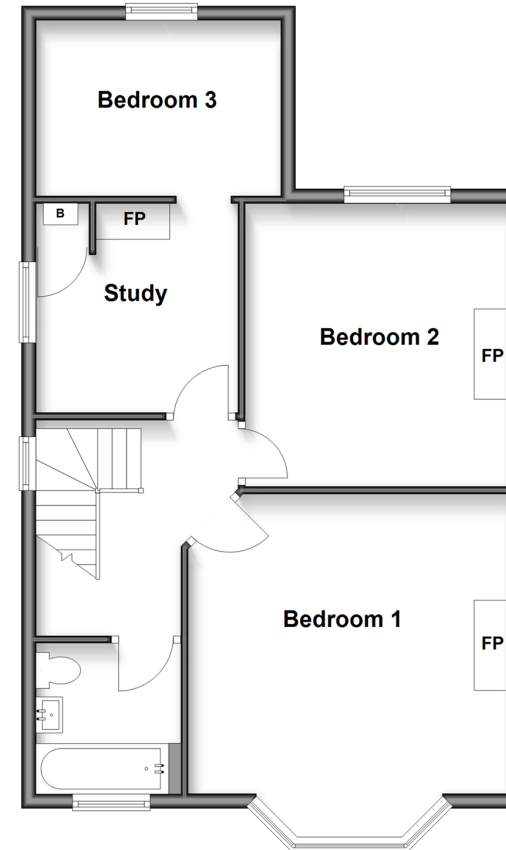
Split Level Ground Floor

Approx. 95.7 sq. metres (1029.7 sq. feet)



First Floor

Approx. 63.1 sq. metres (678.8 sq. feet)



Accommodation

GROUND FLOOR

Entrance Porch

Hallway

Lounge: 14'9 x 12'11 (4.50m x 3.94m)

Dining Room: 12'10 x 12'0 (3.91m x 3.66m)

Sun Room: 9'6 x 7'2 (2.90m x 2.19m)

Kitchen/Breakfast Room: 18'6 x 11'5 (5.64m x 3.48m)

Utility Room: 13'2 x 6'5 (4.02m x 1.96m)

Shower Room

Bedroom 4 (Former Garage): 15'4 x 8'3 (4.68m x 2.52m)

FIRST FLOOR

Landing

Bedroom 1: 14'8 x 12'11 (4.47m x 3.94m)

Bedroom 2: 12'10 x 12'0 (3.91m x 3.66m)

Study: 9'6 x 9'3 (2.90m x 2.82m)

Bedroom 3: 11'1 x 7'11 (3.38m x 2.41m)

Bathroom

OUTSIDE

Driveway

Rear Garden



Main features

- 1930's bay fronted semi-detached house
- An excellent family home for those who love to entertain
- Generous separate lounge, dining room and kitchen/breakfast room
- Versatile space with ground floor bedroom, utility and shower room
- Highly sought after location, excellent for popular schools, travel links and amenities



Nearest Schools

Primary Schools: New Horizons Children's Academy 0.1 miles
Balfour Junior School 0.3 miles

Secondary Schools: Holcombe Grammar School 0.0 miles,
Victory Academy 0.6 miles



Transport Information

Train Stations: Chatham 1.2 miles, Rochester 1.9 miles,
Strood 2.5 miles



Address

Maidstone Road, Chatham, Kent, ME4



Directions

For directions to this property please contact us.



Wards
Helping you move forwards

Call Chatham Branch 01634 841243 ■ wardsofkent.co.uk



- If buying to let, the energy rating will need to be improved to at least 'E' rating before you can let the property
- Appliances & services are untested, dimensions are approximate and floor plans are not to scale

- Legal advice should be taken to verify fixtures/fittings, planning, alterations and/or lease details
- Through a Homewise Home For Life Plan people aged 60+ can secure this property for up to 50% less, by purchasing a Lifetime Lease.



10424175/20251002/BC/BC