



## 1A Esthwaite Lane

Derriford, Plymouth, PL6 5FQ

Guide Price £750,000

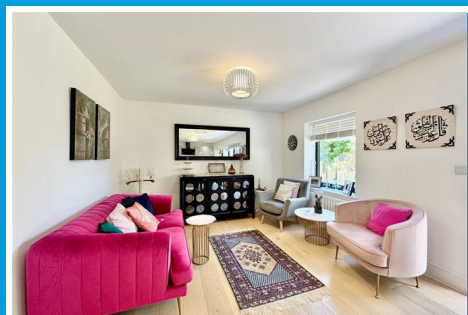




# 1A Esthwaite Lane

Derriford, Plymouth, PL6 5FQ

**Guide Price £750,000**



**ESTHWAITE LANE, DERRIFORD, PLYMOUTH, PL6 5FQ**

**GUIDE PRICE £750,000 - £800,000**

## SUMMARY

Individually designed, detached modern house built 2021, largely as new. Enjoying a good degree of privacy with wide patio & south westerly facing enclosed rear garden. Downstairs comprises a spacious reception hall, downstairs wc, generous-sized lounge, 30ft long fitted kitchen/dining room/snug & useful utility room. At first floor level there are 4 double bedrooms, master bedroom with walk-in wardrobe, en-suite & well appointed family bathroom.

## LOCATION

Found in this prime, popular, residential are of Derriford lying within close proximity of Derriford hospital, Derriford Business Park & with convenient access into the city & close by connection to major routes in other directions.

## ACCOMMODATION

### PORCH

2 light points. Front door with double-glazed light & adjoining window into;

### GROUND FLOOR

#### RECEPTION HALL

**16'2 x 8'9 maximum (4.93m x 2.67m maximum)**

Staircase rising to the first floor. Two useful deep storage cupboards.

#### WC

**4'4 x 3'5 (1.32m x 1.04m)**

White suite with wash hand basin & concealed cistern. Vanity wash hand basin with cupboard under.

#### LOUNGE

**20'9 x 11'7 overall (6.32m x 3.53m overall)**

Two windows to the front.

### KITCHEN/DINING ROOM/SNUG

**30'9 x 11'4 overall (9.37m x 3.45m overall)**

Light & airy. Set overlooking the rear garden with 2 windows & central tri-fold doors. Ceiling light-points. Hard wired smoke detector Additional lighting in the kitchen with pendant light points over the breakfast bar & down lighters. Quality fitted integrated kitchen with work surfaces on all sides. Under mounted sink with chrome mixer tap. Quality integrated appliances include AEG 4 ring variable sized hob with an extractor hood over. Dishwasher. AEG oven with AEG combination microwave/oven above. Upright fridge/freezer. Delightful outlook with snug overlooking the rear garden.

### UTILITY ROOM

**7'5 x 6'7 overall (2.26m x 2.01m overall)**

Double-glazed door opening to the drive. Cupboard housing the Vaillant gas fired boiler which services the central heating & domestic hot water. Work surface with matching splash-back, inset stainless steel sink, cupboard under & 2 spaces with plumbing suitable for a washing machine & tumble dryer.

### FIRST FLOOR

#### LANDING

**19'6 x 6'8 overall (5.94m x 2.03m overall)**

Light & hard wired smoke detector. Useful storage cupboard.

#### MASTER BEDROOM

**15'1 x 11'7 (4.60m x 3.53m)**

Picture window enjoying an outlook over the rear garden with long views beyond. Long walk-in wardrobe.

#### WALK-IN WARDROBE

**10'11 x 4'10 (3.33m x 1.47m )**

Fitted shelving & clothes rails. Door to;

#### EN-SUITE SHOWER ROOM

**8'11 x 3'10 (2.72m x 1.17m)**

Velux double-glazed window. Quality white suite with close

coupled wc, vanity wash hand basin with mixer tap & 2 drawers under, mirror over. Double-sized tiled shower with thermostatic control with hand held mixer & overhead douchespray. Chrome ladder radiator.

### BEDROOM TWO

11'9 x 10'2 (3.58m x 3.10m)

Window to the front

### BEDROOM THREE

11'9 x 10'2 (3.58m x 3.10m)

Window to the front.

### BEDROOM FOUR

10'11 x 9'10 (3.33m x 3.00m)

Window to the side.

### FAMILY BATHROOM

10'9 x 5'3 (3.28m x 1.60m)

Velux double-glazed roof light. Quality white suite with wc, vanity wash hand basin with 2 drawers under & mirror over. Panelled bath with mixer tap, hand held shower, quadrant tiled shower with Mira static shower control.

### DOUBLE GARAGE

19'9 x 19'8 (6.02m x 5.99m)

Two remote controlled up & over doors. Lighting & pitched roof. Good potential for extension/conversion.

### EXTERNALLY

An entrance opens into a level paved path leading up to the front door. A path continues around the side to the rear garden. A separate wide entrance opens into the brick paved Herringbone pattern drive providing off street parking for 2 large vehicles comfortably. Space for wheelie bin storage. An OHME electric car charging point. Lawned gardens to the side of the garage & path leading through to the enclosed rear garden.

To the rear of the property a delightful mature garden with wide paved patio next to the property with outside power point with glass & stainless steel detail. Beyond an extensive lawned garden ideal for children to play safely in/Alfresco entertaining. A path along one side, fences to the boundary mainly laid to lawn, a number of trees providing welcome shade on a sunny day.

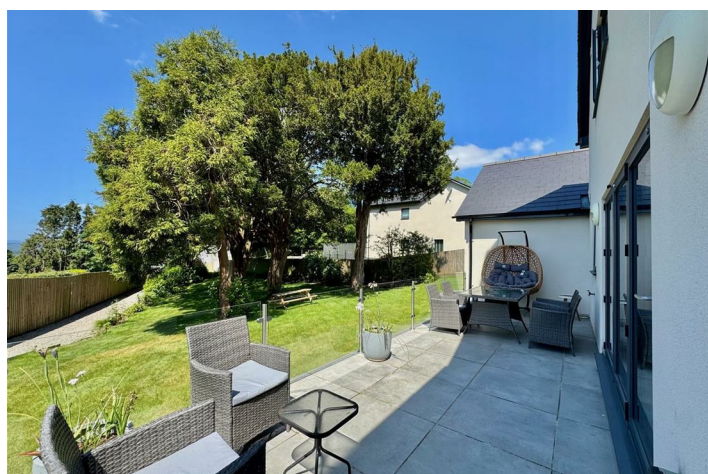
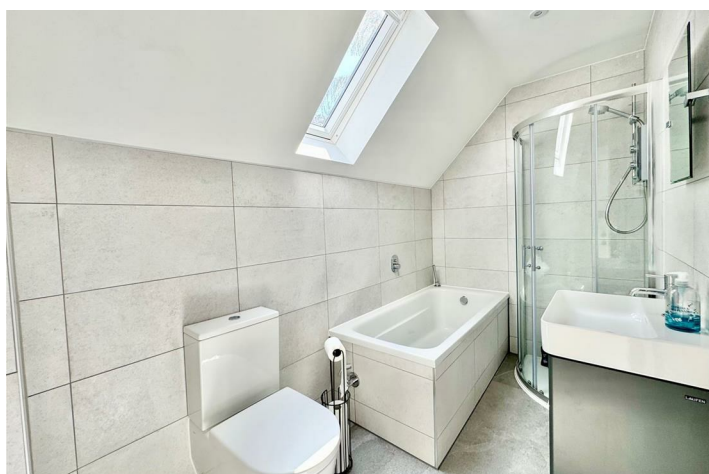
### COUNCIL TAX

Plymouth City Council

Council Tax Band: F

### SERVICES PLYMOUTH

The property is connected to all the mains services: gas, electricity, water and drainage.





Road Map



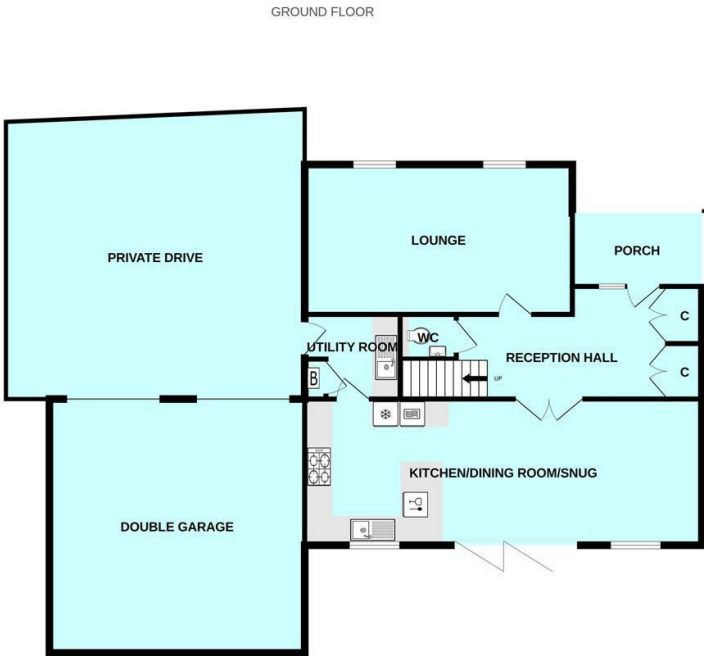
Hybrid Map



Terrain Map



Floor Plan

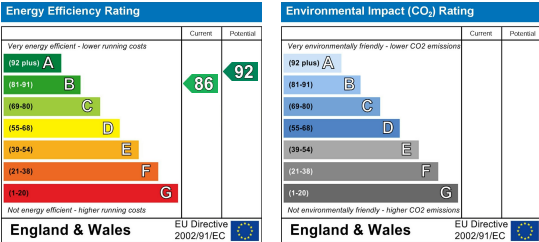


Made with Metropix ©2025

Viewing

Please contact our Plymouth Office on 01752 664125 if you wish to arrange a viewing appointment for this property or require further information.

Energy Efficiency Graph



These particulars, whilst believed to be accurate are set out as a general outline only for guidance and do not constitute any part of an offer or contract. Intending purchasers should not rely on them as statements of representation of fact, but must satisfy themselves by inspection or otherwise as to their accuracy. No person in this firm's employment has the authority to make or give any representation or warranty in respect of the property.