



**Price**  
**£365,000**

**Freehold**

3x  1x  2x 

**Moor Park Close,  
Rainham, Gillingham,  
Kent, ME8**

**OVER 60?**

Secure this property  
for up to **59% less!**

*Wards*  
Helping you move forwards





## Main features

- A well presented and extended property that offers excellent value for money
- Open plan lounge/dining area and modern kitchen
- Lovely family area ideal for entertaining
- Private corner plot garden
- Close to shops and schools

## Accommodation

### GROUND FLOOR

Entrance Hall

Lounge/Dining Area : 22'1 x 11'0 (6.74m x 3.36m)

Family Area : 16'8 x 9'2 (5.08m x 2.80m)

Kitchen: 8'9 x 8'8 (2.67m x 2.64m)

### FIRST FLOOR

Landing

Bedroom 1 : 11'4 x 10'4 (3.46m x 3.15m)

Bedroom 2 : 11'4 x 8'3 (3.46m x 2.52m)

Bedroom 3 : 8'5 x 8'4 (2.57m x 2.54m)

Bathroom

### OUTSIDE

Front Garden

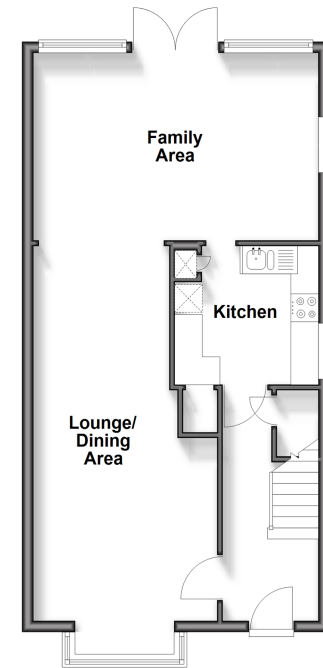
Rear Garden

Garage: 17'4 x 8'2 (5.29m x 2.49m)

Driveway

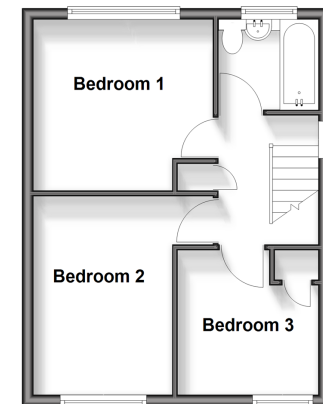
### Ground Floor

Approx. 53.5 sq. metres (575.5 sq. feet)



### First Floor

Approx. 34.9 sq. metres (376.0 sq. feet)



**Call Rainham - 01634 373531 ■ [wardsofkent.co.uk](http://wardsofkent.co.uk)**

- Legal advice should be taken to verify fixtures/fittings, planning, alterations and/or lease details
- Appliances & services are untested, dimensions are approximate and floor plans are not to scale
- Through a Homewise Home For Life Plan people aged 60+ can secure this property for up to 59% less, by purchasing a Lifetime Lease.



11338889/20250414/CW/DW