



Grosvenor Square
Mayfair, W1K

CHESTERTONS





Brand newly refurbished, remodelled and interior designed lateral apartment on one of London's most premier squares. The block benefits from 24 hour uniformed porters with a lift and secure parking.

- Lift
- 24 hour porter
- Secure off road parking
- Air conditioning through out
- Furnished
- Prime location

£10,616.67 pcm

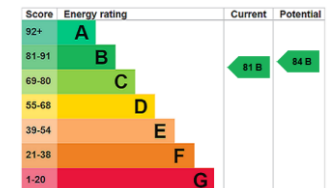
Additional tenant charges apply (fees apply to non-AST tenancies only)

Tenancy Agreement Fee: £300

References per Tenant/Guarantor: £60

Inventory check (approx. £100 – £250 inc. VAT)

chestertons.co.uk/property-to-rent/applicable-fees



Minimum Term: 12 months
Deposit Required: £14,700.00
Local Authority: City Of Westminster
Council Tax Band: H
EPC Rating: B
Furnished, Part Furnished

Chestertons Mayfair Lettings

47 South Audley Street

Mayfair

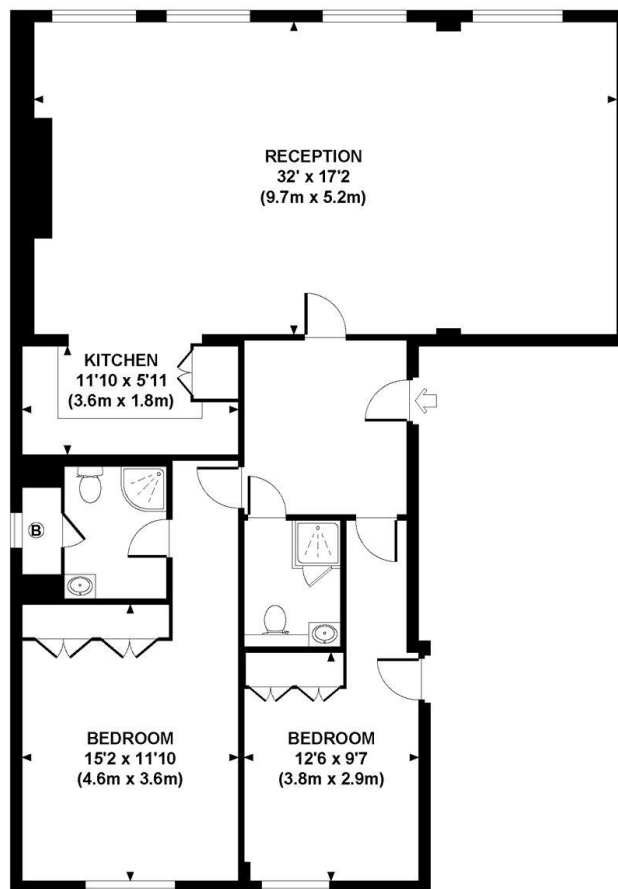
London

W1K 2QA

mayfairlettingsusers@chestertons.co.uk

020 7288 8301

GROSVENOR SQUARE
Approximate Gross Internal Area 1178 sq ft / 109.4 sq m



SECOND FLOOR
GROSS INTERNAL
FLOOR AREA 1178 SQ FT

Although every attempt has been made to ensure accuracy, all measurements are approximate.
The floor plan's for illustrative purposes only and not to scale. Measured in accordance to RICS standards.
DE-PHOTOGRAPHY.NET

Chesterton UK Services Limited trading as Chestertons for themselves and for the vendor of this property whose agents they are, give notice that (i) these particulars do not constitute any part of an offer or contract, (ii) all statements contained within these particulars are made without responsibility on the part of Chestertons or the vendor, (iii) whilst made in good faith, none of the statements contained within these particulars are to be relied upon as a statement or representation of fact, (iv) any intending purchasers must satisfy themselves by inspection or otherwise as to the correctness of each of the statements contained within these particulars, (v) the vendor does not make or give either Chestertons or any person in their employment any authority to make or give representation or warranty whatsoever in relation to this property. Wide angle lenses may be used. ©Copyright Chestertons | Chesterton Global Ltd | Registered Office 40 Connaught Street, Hyde Park, London W2 2AB Registered Company Number 05334580.



This paper is
100% recyclable