
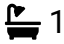

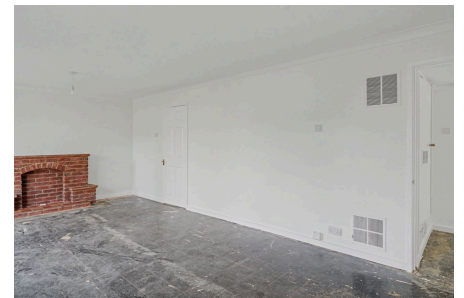


Milcote Road, Solihull, B91 1JW

Offers Over £200,000

 2  1  1

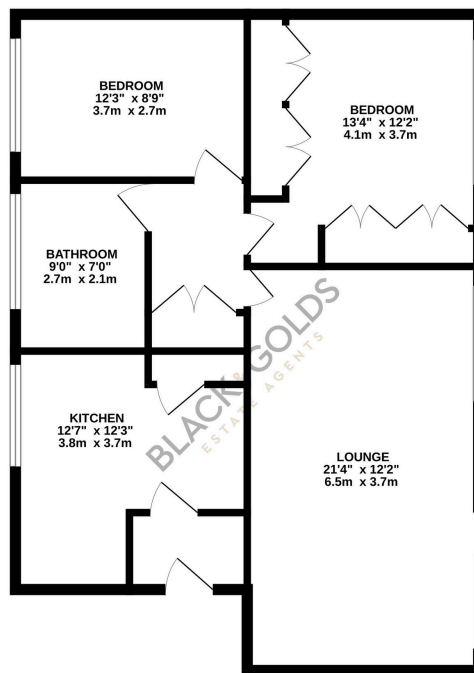


Immaculate Two-Bedroom Ground Floor Apartment in Family-Friendly Solihull – Modern Finish.

Key Features

- Recently renovated ground floor apartment to a high specification
- Spacious lounge and dining area with abundant natural light
- Modern, fully fitted kitchen and bathroom with stylish fixtures
- Ideal for first-time buyers, downsizers, or buy-to-let investors
- Excellent transport links: train stations, bus routes, and commuter-friendly roads
- Two bright and cosy bedrooms with contemporary finishes
- Sliding doors leading to well-maintained communal garden
- Separate garage space
- Located in a quiet, family-friendly neighbourhood
- Close to local amenities: Touchwood Shopping Centre, Sears Retail Park, and green spaces

GROUND FLOOR
792 sq.ft. (73.6 sq.m.) approx.



TOTAL FLOOR AREA - 792 sq.ft. (73.6 sq.m.) approx.
Whilst every attempt has been made to ensure the accuracy of the floorplan contained here, measurements of doors, windows, rooms and any other items are approximate and no responsibility is taken for any error, omission or mis-statement. This plan is for illustrative purposes only and should be used as such by any prospective purchaser. The services, systems and appliances shown have not been tested and no guarantee as to their operability or efficiency can be given.
Made with Metropix 02026