



Clements estate agents

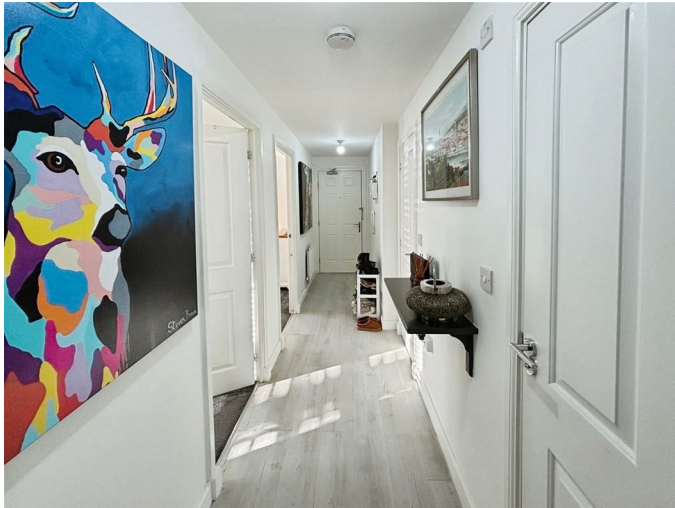


Featherbed Lane, Hemel Hempstead, HP3 9DJ Offers In Excess Of £290,000

Located on Featherbed Lane in Apsley, this purpose-built ground floor apartment offers a delightful blend of modern living and convenience. With two well-proportioned bedrooms, this property is ideal for young professionals, couples, or small families seeking a comfortable home. In summary, this two-bedroom ground floor apartment on Featherbed Lane is a fantastic opportunity for those looking for a modern and convenient living space in Apsley. With its appealing features and prime location, it is sure to attract interest from a variety of buyers. Do not miss the chance to make this lovely apartment your new home.

Communal Hallway

Entrance Hall



Living Room 13'9 x 13'3 max (4.19m x 4.04m max)



Modern Fitted Kitchen 7'9 x 7'6 (2.36m x 2.29m)



Bedroom One 11'4 x 10'5 (3.45m x 3.18m)



Bedroom Two 10'5 max x 9'1 (3.18m max x 2.77m)



Bathroom



Allocated Parking

Floor Plan

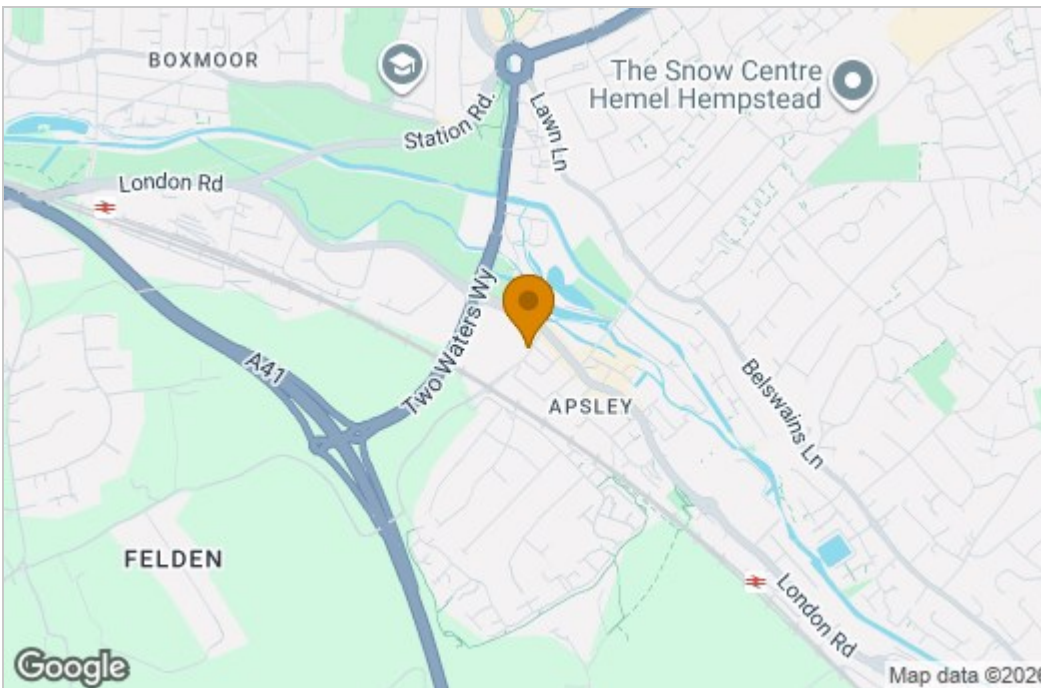


Ground Floor

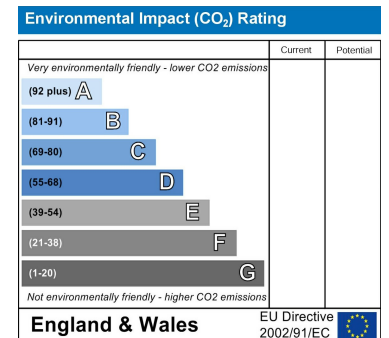
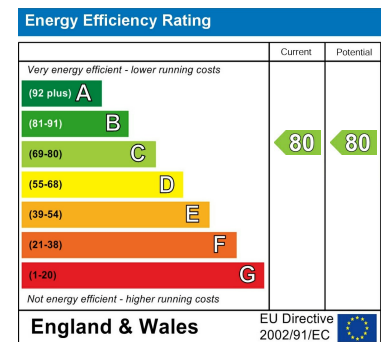
This floor plan is for illustrative purposes only. It is not drawn to scale. Any measurements, floor areas (including any total floor area), openings and orientations are approximate. No details are guaranteed, they cannot be relied upon for any purpose and do not form any part of any agreement. No liability is taken for any error, omission or misstatement. A party must rely upon its own inspection(s). Powered by www.Propertybox.io



Area Map



Energy Efficiency Graph



These particulars, whilst believed to be accurate are set out as a general outline only for guidance and do not constitute any part of an offer or contract. Intending purchasers should not rely on them as statements of representation of fact, but must satisfy themselves by inspection or otherwise as to their accuracy. No person in this firm's employment has the authority to make or give any representation or warranty in respect of the property.