



Milford Street

Salford



Offers in Region of £220,000

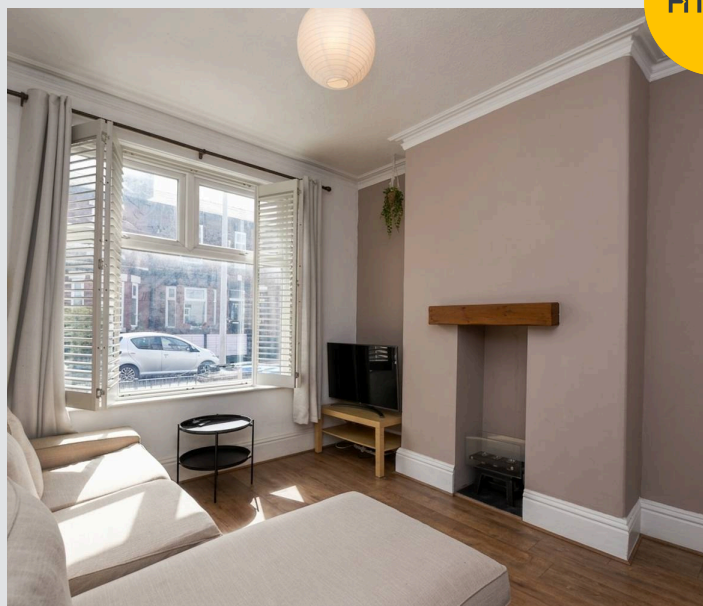
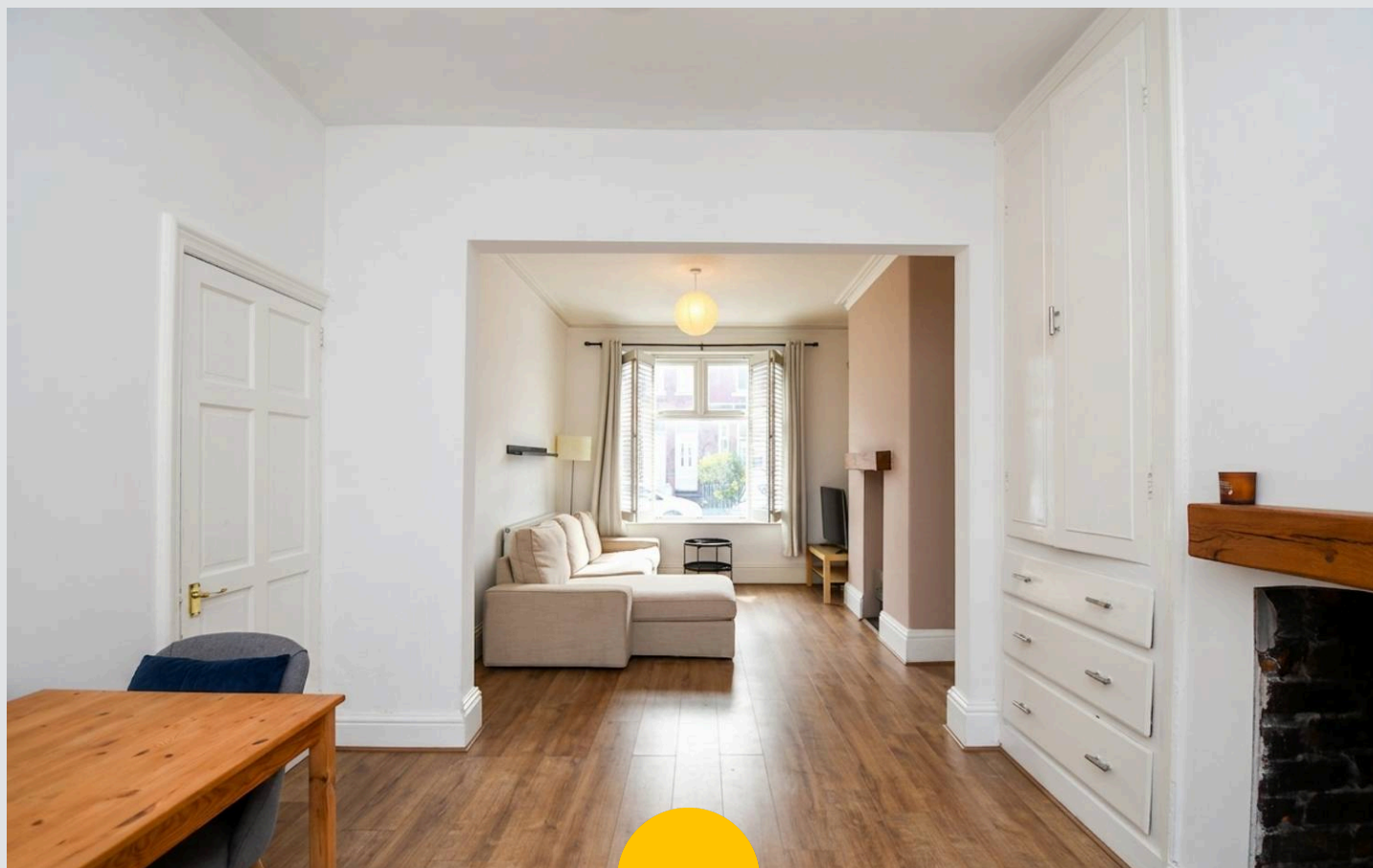
# Milford Street

Salford

Council Tax band: A

Tenure: Freehold

- CHAIN FREE Beautifully Presented Two Bedroom Terraced Property
- Two Double Bedrooms With Ample Space For Additional Furniture
- Spacious Modern Fitted Kitchen
- Four Piece Family Bathroom
- Low-Maintenance Courtyard Gardens to the Front and Rear
- Close to Langworthy Tram Stop, with Direct Access into Manchester City Centre
- Within Walking Distance of Salford Quays and Media City, which is Host to a Fine Array of Bars, Shops and Restaurants
- Ideal First Time Home or Investment



**Entrance Hallway**

**Lounge**

10' 11" x 12' 2" (3.32m x 3.70m)

**Dining Room**

11' 6" x 11' 11" (3.50m x 3.63m)

**Kitchen**

10' 2" x 8' 4" (3.11m x 2.54m)

**Cellar One**

10' 6" x 11' 11" (3.21m x 3.64m)

**Cellar Two**

11' 4" x 11' 5" (3.46m x 3.49m)

**Landing**

**Bedroom One**

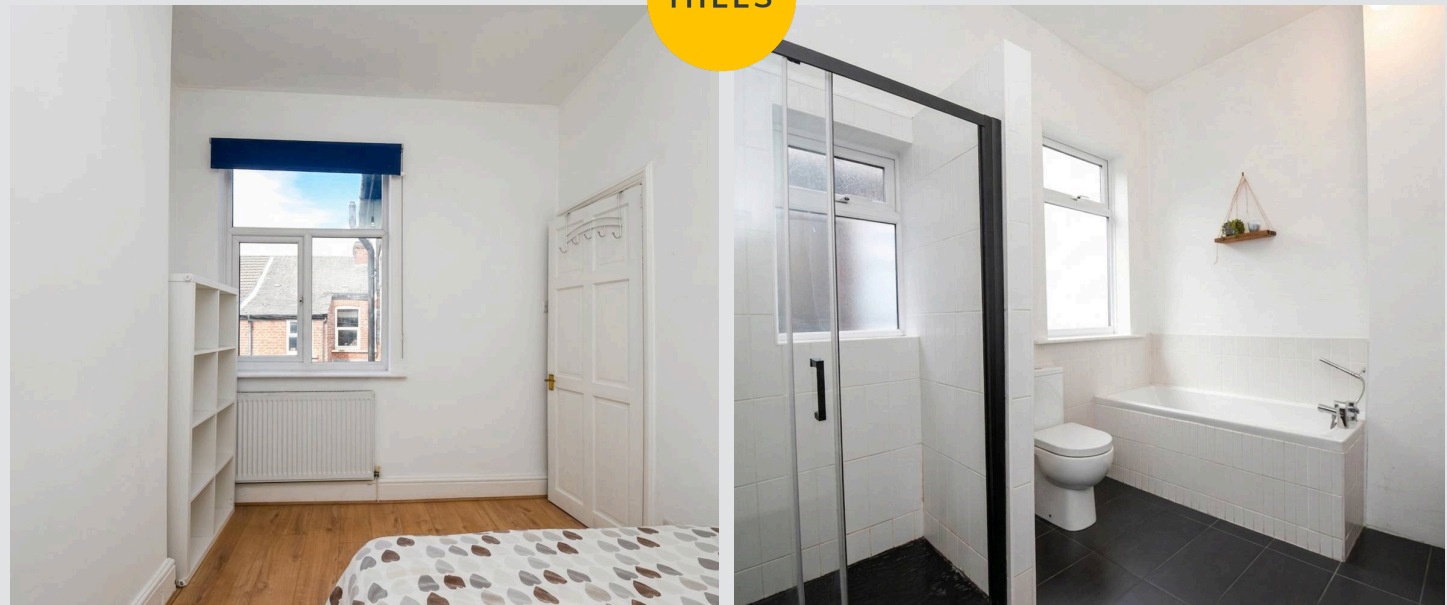
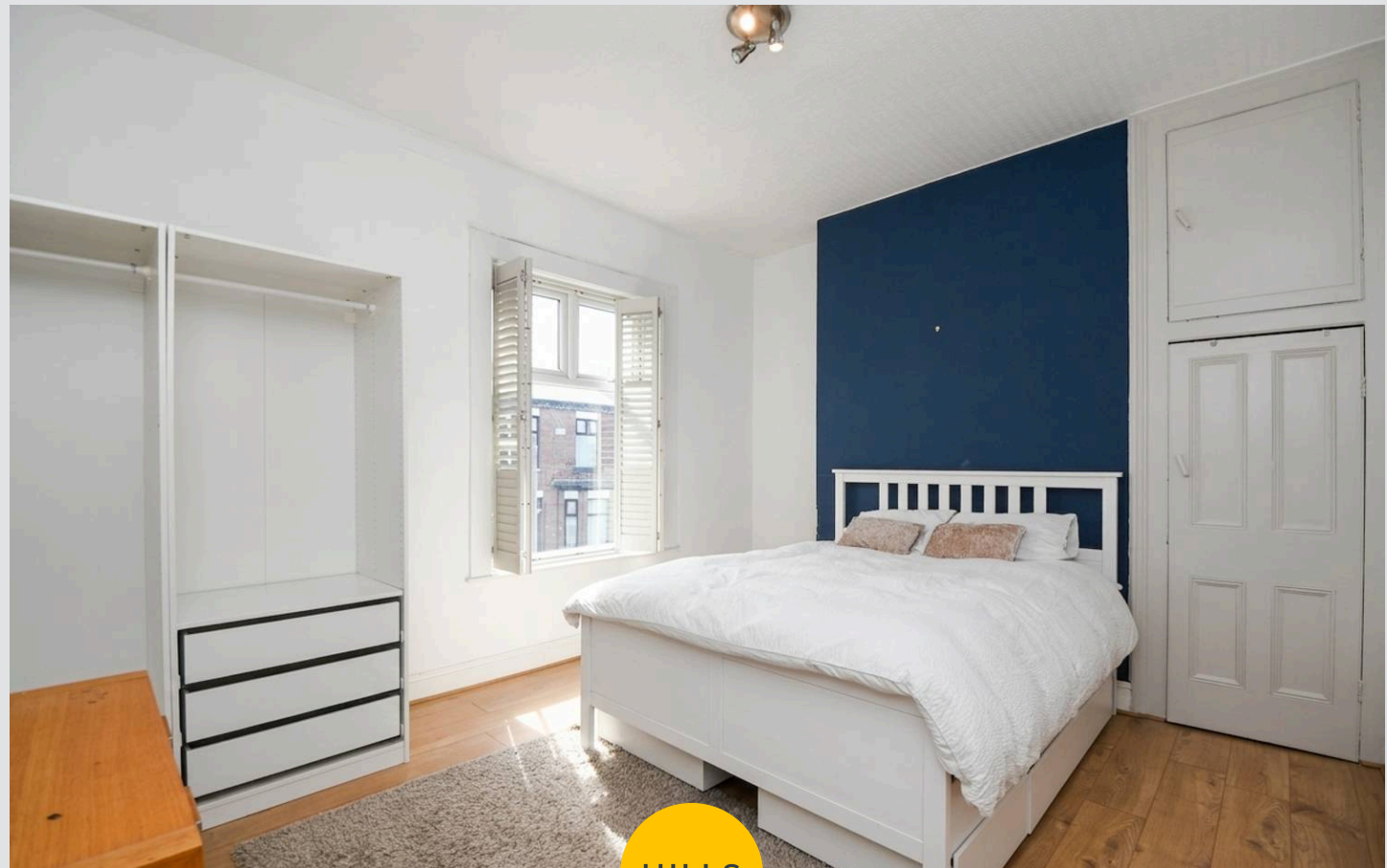
12' 3" x 14' 6" (3.73m x 4.42m)

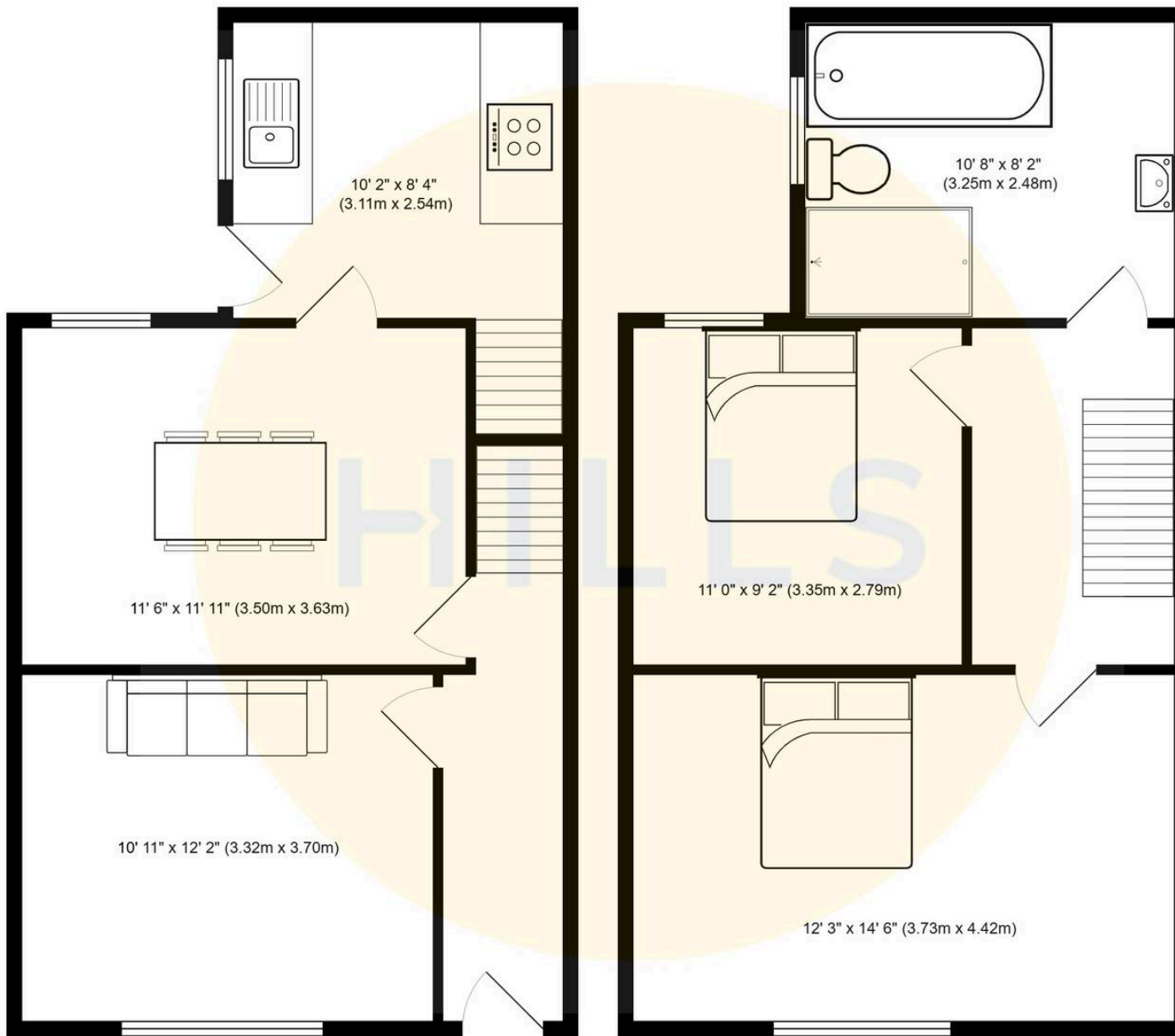
**Bedroom Two**

11' 0" x 9' 2" (3.35m x 2.79m)

**Bathroom**

10' 8" x 8' 2" (3.25m x 2.48m)







## Hills | Salfords Estate Agent

Hills Residential, Sentinel House Albert Street – M30 0SS

0161 707 4900

[sales@hills.agency](mailto:sales@hills.agency)

[www.hills.agency/](http://www.hills.agency/)



By law, we are required to conduct anti-money laundering checks on all potential buyers and sellers. In line with HMRC guidelines, our trusted partner, Coadjute, will securely manage these checks on our behalf. A non-refundable fee of £45 + VAT per person will apply, and Coadjute will handle the payment. Once an offer is accepted, Coadjute will send a secure link for you to complete the biometric checks. These checks must be completed before we can send the memorandum of sale to all parties. PLEASE NOTE: The Agent has not tested any equipment, fixtures, fittings or services so cannot verify that they are in working order or fit for the purpose. References to the properties tenure are based on information supplied by the seller. You are advised to check the availability of this property before travelling any distance to view. Every effort has been made to ensure these particulars are correct and not misleading but their accuracy is not guaranteed nor do they form part of any contract.