



Philbeach Gardens, SW5

£3,000 Per calendar month

A bright and spacious two double bedroom apartment situated on the first floor of a period conversion, with wood flooring throughout, two bathrooms and a private balcony.

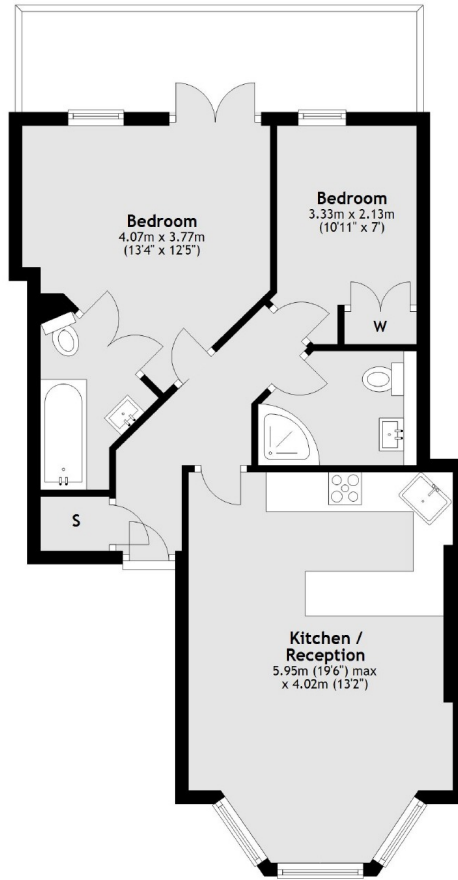
Philbeach Gardens is a quiet crescent street set peacefully away from the highstreet and all that there is to offer, including Over & Under Coffee shop, Marks & Spencer food and a number of restaurants.

Features

- Two Bedrooms
- Private Balcony
- Wood Flooring Throughout
- High Ceilings
- Communal Garden Access
- Open Plan Kitchen

Philbeach Gardens, London, SW5

First Floor



Main area: Approx. 55.4 sq. metres (596.4 sq. feet)
Plus balconies, approx. 9.8 sq. metres (105.3 sq. feet)