

# Jacobs & Hunt



Guide Price £550,000

EPC Rating '57'

Jade Cottage  
Nyewood Road  
Nyewood  
South Harting  
GU31 5JF

A charming and characterful three/four bedroom end-of-terrace cottage offering generous and versatile accommodation, set within the sought-after rural village of Nyewood. Jade Cottage is a deceptively spacious and beautifully characterful period home that immediately impresses with its wealth of original features and warm, welcoming atmosphere. Extending to approximately 1,243 sq ft of internal accommodation - excluding the substantial outbuildings - this is a property that rewards closer inspection at every turn.

[www.jacobshunt.co.uk](http://www.jacobshunt.co.uk)

[properties@jacobshunt.co.uk](mailto:properties@jacobshunt.co.uk)

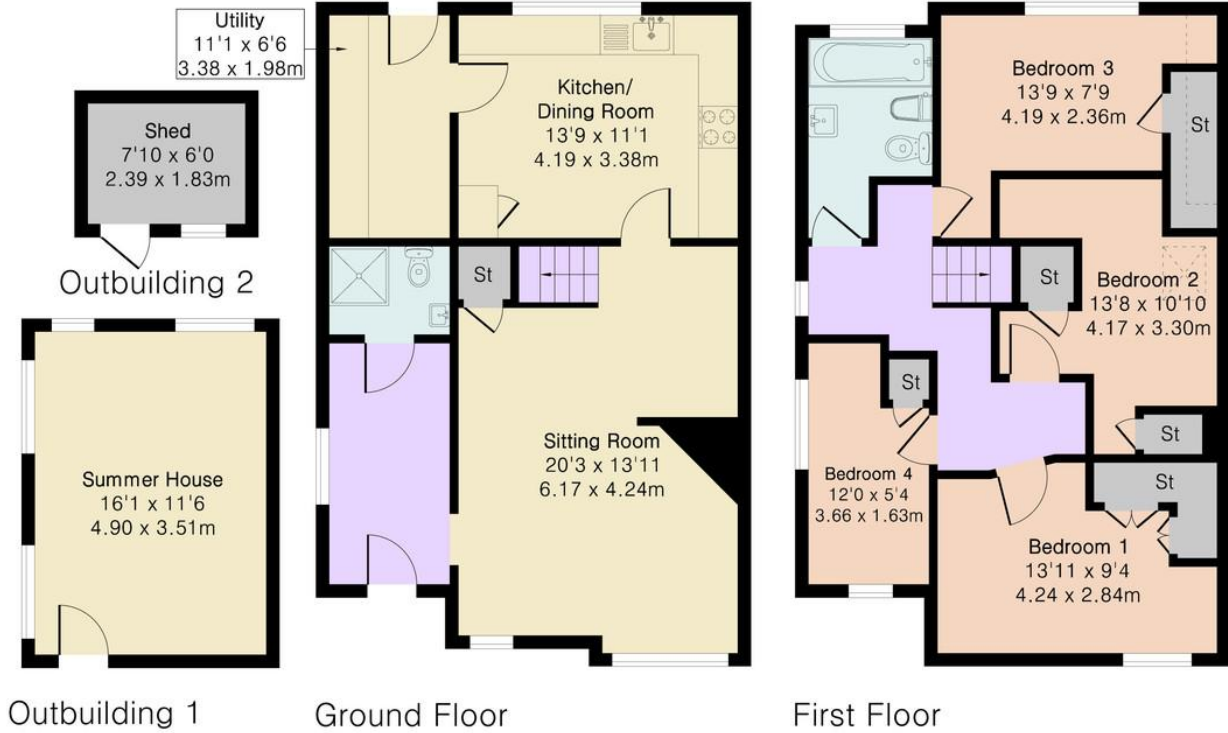
01730 262744

**Approximate Gross Internal Area 1243 sq ft - 116 sq m  
(Excluding Outbuildings)**

Ground Floor Area 621 sq ft – 58 sq m

First Floor Area 622 sq ft – 58 sq m

Outbuildings Area 232 sq ft – 22 sq m



**DISCLAIMER**

Whilst every care has been taken to prepare these particulars, they are for guidance purposes only. All measurements are approximate are for general guidance purposes only and whilst every care has been taken to ensure their accuracy, they should not be relied upon and potential buyers/tenants are advised to recheck the measurements