



WETHERELL
MAYFAIR'S FINEST PROPERTIES



Woods Mews, W1K

£5,958 PCM

A one bedroom apartment with private balcony in a peaceful Mayfair Mews.

Situated within a quiet mews, this second floor flat has a large reception leading onto a private balcony toward the rear of the building with a kitchen and dining space with fitted appliances.

The double bedroom comes with ample fitted storage with a separate bathroom and storage throughout the property.

Woods Mews is set in a quiet residential street located to the east of Hyde Park and to the north of Piccadilly.

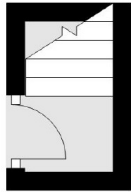


FEATURES

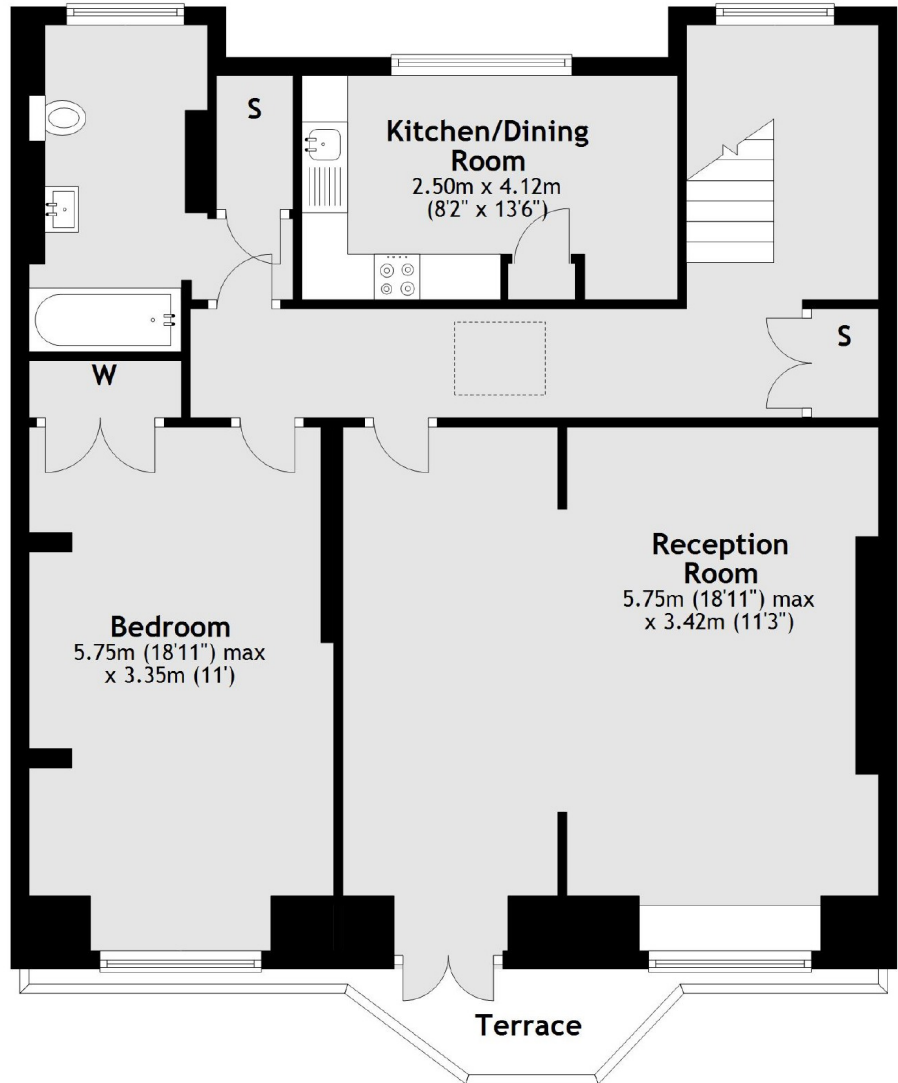
- Spacious Double Bedroom • Recently Renovated • Quiet Mews • Private Balcony • Large Reception • Secure Entry Systems •



Woods Mews,
London, W1K



Second Floor



Third Floor

Total area: approx. 93.7 sq. metres (1008.2 sq. feet)



WETHERELL
MAYFAIR'S FINEST PROPERTIES

102 Mount Street,
London, W1K 2TH

T: 020 7529 5588

E: rentals@wetherell.co.uk

We aim to make our particulars both accurate and reliable. However they are not guaranteed; nor do they form part of an offer or contract. If you require clarification on any points then please contact us, especially if you're traveling some distance to view. Please note that appliances and heating systems have not been tested and therefore no warranties can be given as to their working order.



wetherell.co.uk