

4 Charlotte Way
Leybourne
West Malling
ME19 5FA



4 Charlotte Way

£250,000



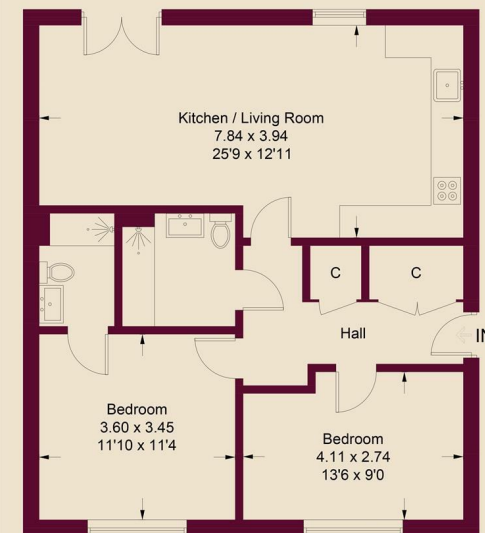
Contact
02080 509915
emma@mulberryparkstates.co.uk
<http://www.mulberryparkstates.co.uk/>

Local Authority
Tonbridge and Malling

Council Tax Band C

EPC Rating B

Charlotte Way, Leybourne Chase, ME19



Approximate Gross Internal Area = 73.0 sq m / 786 sq ft

This plan is for layout guidance only. Not drawn to scale unless stated. Windows and door openings are approximate. Whilst every care is taken in the preparation of this plan, please check all dimensions, shapes and compass bearings before making any decisions reliant upon them. (ID1300766)