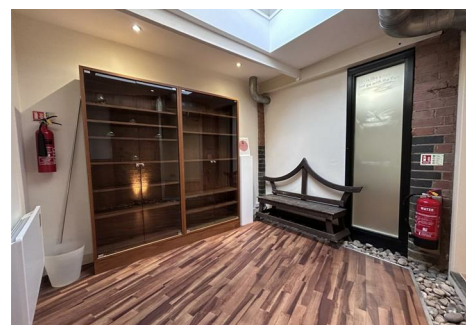
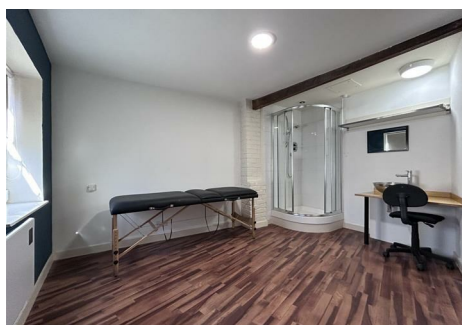
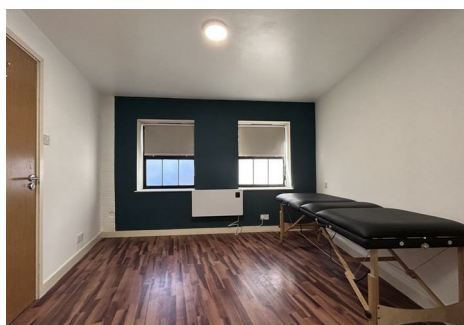


est 1979

 Jeremy
Leaf & Co.



Percy Road, North Finchley, N12

£40,000 Per Annum

- Ground floor
- 0.1 miles from North Finchley High Road
- New lease
- Private entrance
- 0.4 miles from Woodside Park Northern Line Underground Station
- Suitable for a variety of uses

863 High Road, London, N12 8PT
020 8446 4295

land@jeremyleaf.co.uk
<https://www.jeremyleaf.co.uk/>

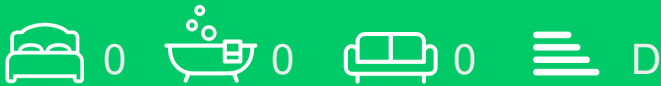
Percy Road, North Finchley, London, N12 8BU

A ground floor office/ commercial space to rent in this former stable block. The premises is currently in use as a medical research centre and has previously been used as a beauty salon and treatment rooms and is also suitable for office use.

The property is conveniently located approximately 0.1 mile from the multiple shopping and transport facilities of North Finchley High Road and Woodside Park (northern line) underground station is just 0.4 mile away.

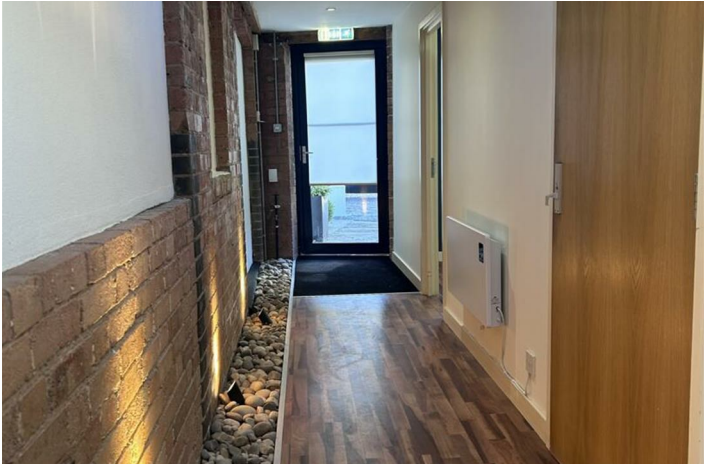
Features are as follows:

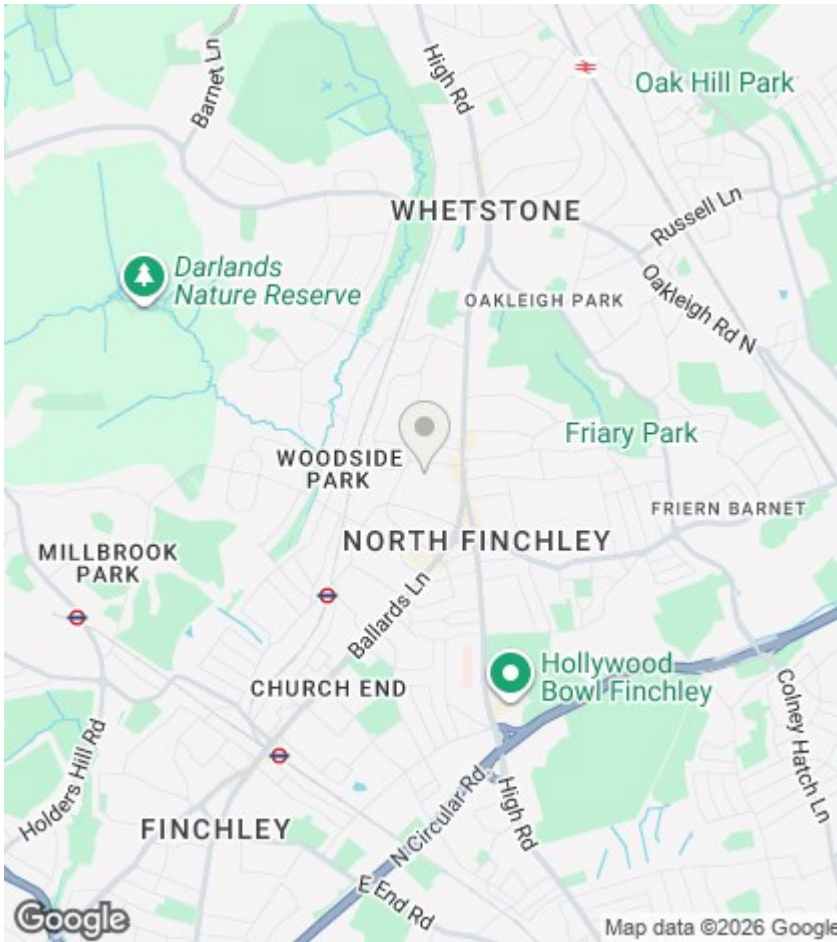
- Rent: £45,000 per annum
- Term: New FRI 5-year lease
- No premium
- No business rates payable
- Each party to be responsible for their own costs.



Council Tax Band:







Directions

Viewings

Viewings by arrangement only. Call 020 8446 4295 to make an appointment.

EPC Rating:

D

Energy Efficiency Rating		Current	Potential
Very energy efficient - lower running costs			
(92 plus) A			
(81-91) B			
(69-80) C			
(55-68) D		67	67
(39-54) E			
(21-38) F			
(1-20) G			
Not energy efficient - higher running costs			
England & Wales		EU Directive 2002/91/EC	

