

BRUNSWICK FIELDS



An exclusive residential development offering a stylish range of 2 to 5 bedroom houses, as well as 3 bedroom detached bungalows.



WELCOME

Brunswick Fields is a brand new exclusive residential development located on the edge of the historic fenland market town of Long Sutton. The overall site will offer a stylish range of 2 to 5 bedroom houses as well as three bedroom detached bungalows, with spacious plots and design in mind, the development will suit a variety of buyers needs and price ranges.



The specification will be to a very high standard assuring attention to detail on every property, and the use of quality materials, fixtures and fittings throughout. Some of the finishes may be personalised depending on the build stage.

Loosegate Homes are part of the long established and respected, award-winning D Brown Building Contractors Limited. With a vast experience in residential home building, all Loosegate Homes are built with maximum functionality to homeowners in mind and are covered by a 10 year NHBC guarantee.

D Brown Building Contractors are a widely recognised and highly commended building contractor, as well as a dedicated local employer and apprenticeship provider. They take great pride in quality levels and their vast experience has seen them successfully deliver across a diverse range of sectors, never backing away from a challenge or embracing new technology.

This dedication has been rewarded by a host of Local and National awards, as well as recognition from the likes of NHBC through their continuous A1 rating.

LONG SUTTON

A market town with the countryside on its doorstep, Long Sutton is a picturesque spot nestled within Lincolnshire. Long Sutton embraces a thriving community with a weekly Friday market and a comprehensive array of amenities.

AMENITIES

Discover parks for leisurely strolls, an assortment of independents shops, supermarkets, a library, a medical centre, a sports centre, and educational opportunities which span from primary to secondary schools. The secondary school is a university academy, part of the University of Lincoln academy trust.

CONNECTIONS

The closest city is in neighbouring Cambridgeshire, Peterborough. With much to offer within its confines, its main line train station has regular and direct routes to London, Leeds, Newcastle and even Glasgow - meaning you're well connected from the East of England.



LOCATION AND SITE LAYOUT



Just a 5 minute walk to the town centre

- | | | | | |
|------------------|----------------|----------------|----------------|--------------|
| ● THE ALDER | ● THE CEDAR | ● THE ELDER | ● THE LIME | |
| ● THE ASH | ● THE CHERRY | ● THE FOXTAIL | ● THE MULBERRY | ● THE TULIP |
| ● THE ASPEN | ● THE CHESTNUT | ● THE HAWTHORN | ● THE PINE | ● THE WILLOW |
| ● THE BLACKTHORN | ● THE ELM | ● THE BEECH | ● THE POPLAR | ● THE YEWE |

Accurate as of July 2024. Subject to change.

THE CHERRY

(SINGLE GARAGE)



Image shown is the double garage design

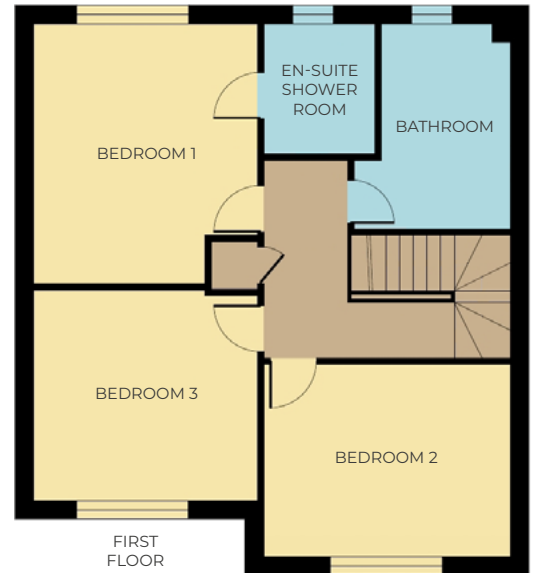
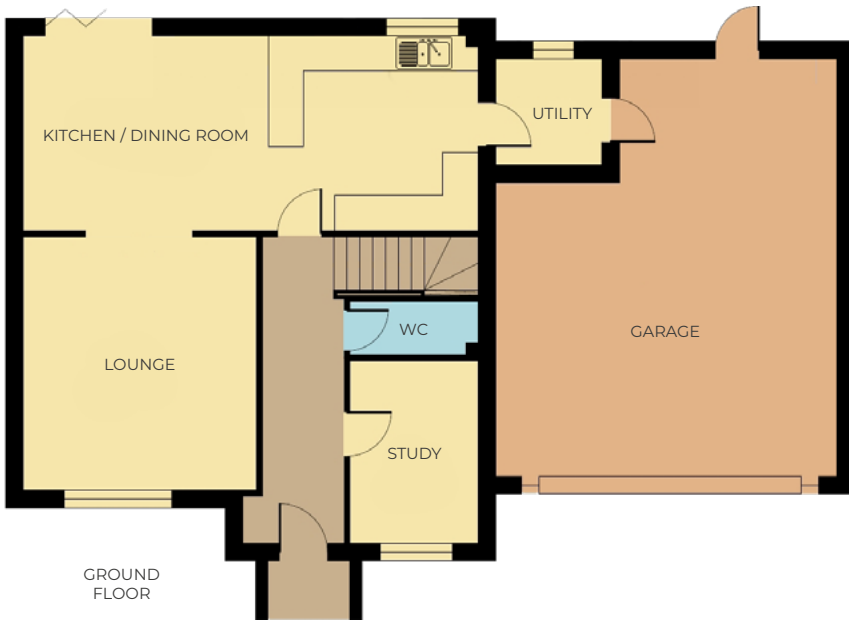


Kitchen / Dining Room	25'4" x 10'10"	7.71m x 3.30m
Lounge	14'1" x 13'0"	4.30m x 3.96m
Study	9'67" x 7'15"	2.95m x 2.18m
Garage	16'4" x 9'0"	4.98m x 2.74m
WC	7'2" x 3'4"	2.17m x 1.05m
Utility	8'9" x 5'9"	2.74m x 1.80m
Bedroom 1	13'9" x 11'10"	4.19m x 3.61m
En-Suite Shower Room	6'89" x 5'11"	2.10m x 1.80m
Bedroom 2	13'13" x 10'2"	4.00m x 3.10m
Bedroom 3	11'10" x 11'2"	3.61m x 3.41m
Bathroom	10'10" x 6'9"	3.31m x 2.09m

Please Note: All measurements are approximate and should be used as a guide only. Kitchen, bathroom & en-suite layouts are to be used as a guide and can vary plot dependant.

THE CHERRY

(DOUBLE GARAGE)



Kitchen / Dining Room	25'4" x 10'10"	7.71m x 3.30m
Lounge	14'1" x 12'9"	4.30m x 3.95m
Study	9'8" x 7'2"	2.95m x 2.18m
Garage (Double)	23'3" x 18'11"	7.08m x 5.77m
Bedroom 1	13'8" x 11'10"	4.20m x 3.61m
En-Suite Shower Room	6'9" x 5'9"	2.10m x 1.80m
Bedroom 2	13'1" x 10'2"	4.00m x 3.10m
Bedroom 3	11'10" x 11'2"	3.61m x 3.41m
Bathroom	10'10" x 6'9"	3.31m x 2.09m

Please Note: All measurements are approximate and should be used as a guide only. Kitchen, bathroom & en-suite layouts are to be used as a guide and can vary plot dependant.

THE YEW

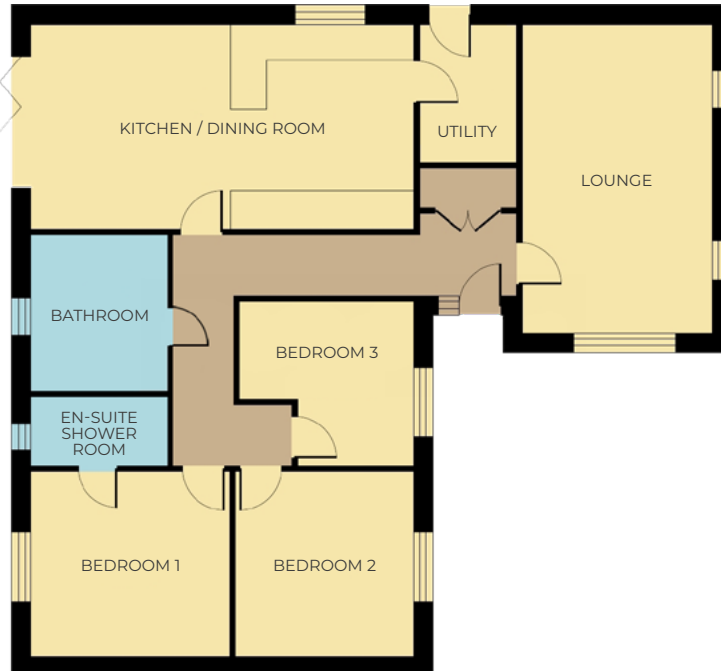


Kitchen / Dining Room	18'6" x 10'6"	5.68m x 3.25m *
Lounge	11'10" x 11'3"	3.61m x 3.42m
WC	5'9" x 2'9"	1.76m x 0.90m
Garage	19'1" x 8'11"	5.82m x 2.73m
Bedroom 1	11'9" x 11'7"	3.57m x 3.53m *
Bedroom 2	12'10" x 10'10"	3.91m x 3.31m *
Bedroom 3	19'1" x 8'11"	5.82m x 2.73m *
Bathroom	7'5" x 6'11"	2.27m x 2.10m

* max

Please Note: All measurements are approximate and should be used as a guide only. Kitchen, bathroom & en-suite layouts are to be used as a guide and can vary plot dependant.

THE PINE

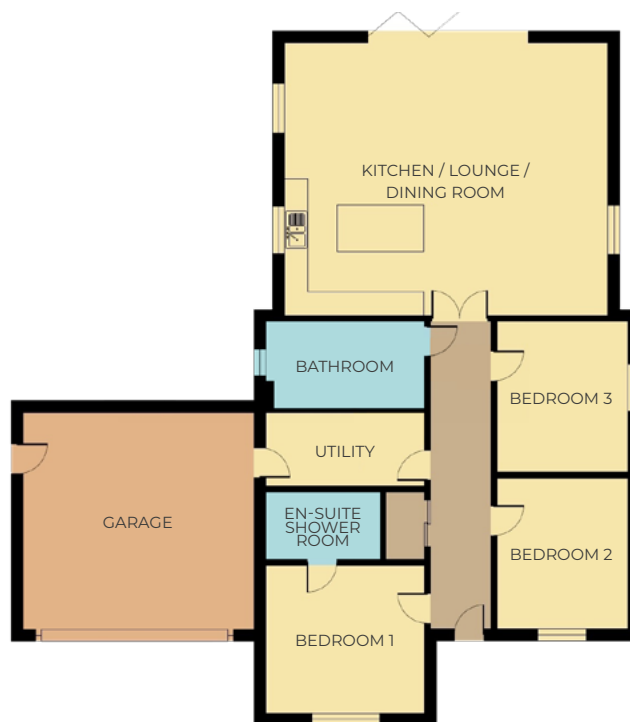


Kitchen / Dining Room	22'8" x 12'2"	6.92m x 3.70m
Lounge	18'3" x 11'3"	5.57m x 3.44m
Utility	8'2" x 5'8"	2.49m x 1.76m
Bedroom 1	11'10" x 11'0"	3.60m x 3.35m
En-Suite	8'10" x 4'10"	2.47m x 1.25m
Bedroom 2	11'0" x 10'7"	3.35m x 3.22m
Bedroom 3	10'4" x 9'9"	3.15m x 2.97m *
Bathroom	9'3" x 8'1"	2.82m x 2.47m

* max

Please Note: All measurements are approximate and should be used as a guide only. Kitchen, bathroom & en-suite layouts are to be used as a guide and can vary plot dependant.

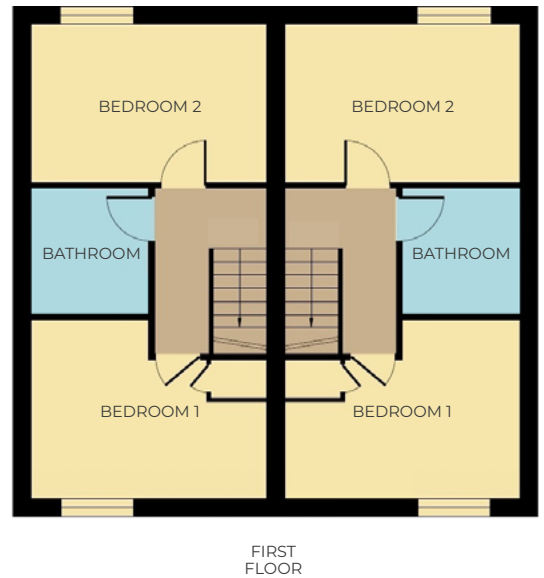
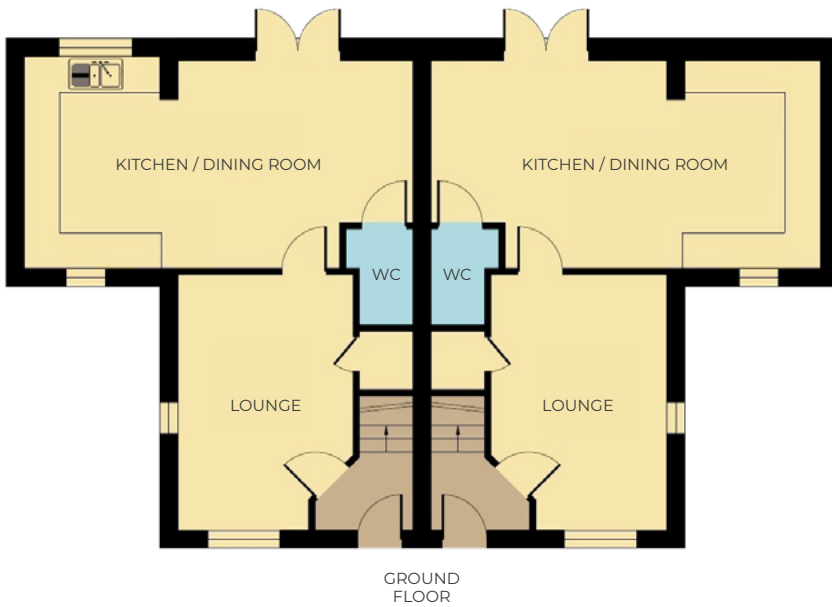
THE BEECH



Kitchen/Lounge/Dining	26'9" x 22'6"	8.16m x 6.87m
Utility	13'1" x 5'11"	4.00m x 1.81m
Bedroom 1	13'1" x 12'3"	4.00m x 3.73m
En-Suite Shower Room	9'4" x 5'7"	2.83m x 1.70m
Bedroom 2	12'6" x 10'10"	3.80m x 3.31m
Bedroom 3	12'6" x 10'10"	3.80m x 3.31m
Bathroom	13'1" x 7'0"	4.00m x 2.12m
Garage	19'1" x 17'11"	5.83m x 5.47m

Please Note: All measurements are approximate and should be used as a guide only. Kitchen, bathroom & en-suite layouts are to be used as a guide and can vary plot dependant.

THE ALDER

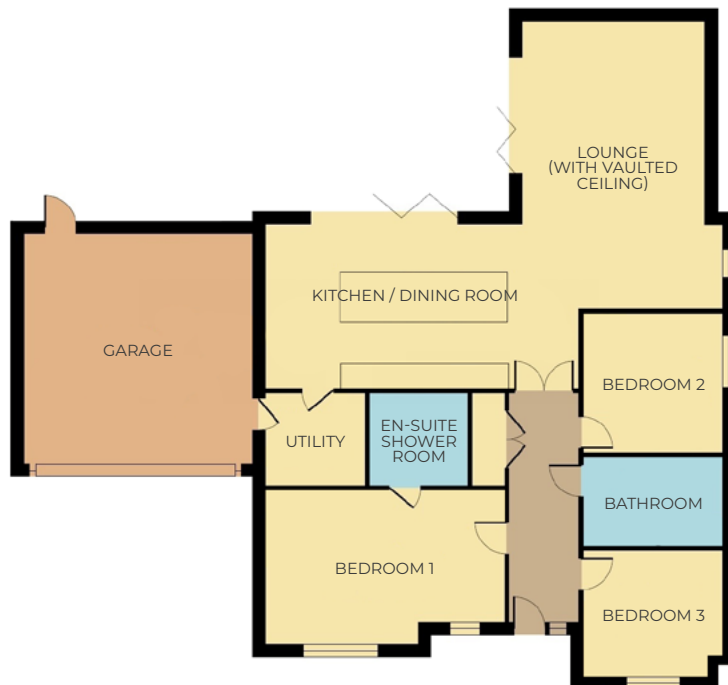


Kitchen / Dining Room	21'4" x 11'6"	6.51m x 3.55m *
Lounge	14'1" x 9'8"	4.28m x 2.94m
Bedroom 1	13'3" x 9'10"	4.04m x 3.00m
Bedroom 2	13'3" x 8'8"	4.04m x 2.64m
Bathroom	6'11" x 6'6"	2.10m x 1.97m

* max

Please Note: All measurements are approximate and should be used as a guide only. Kitchen, bathroom & en-suite layouts are to be used as a guide and can vary plot dependant.

THE BLACKTHORN



Kitchen / Dining Room	35'8" x 12'9"	10.87m x 3.89m *
Lounge	15'10" x 14'3"	4.83m x 4.34m
Utility	7'9" x 7'3"	2.37m x 2.20m
Bedroom 1	18'8" x 12'0"	5'69m x 3.66m *
En-Suite	7'8" x 7'3"	2.34m x 2.20m
Bedroom 2	10'11" x 10'10"	3.33m x 3.30m
Bedroom 3	10'11" x 9'10"	3.33m x 3.00m
Bathroom	10'11" x 6'11"	3.33m x 2.11m
Garage	17'11" x 17'10"	5.46m x 5.44m

* max

Please Note: All measurements are approximate and should be used as a guide only. Kitchen, bathroom & en-suite layouts are to be used as a guide and can vary plot dependant.

THE MULBERRY

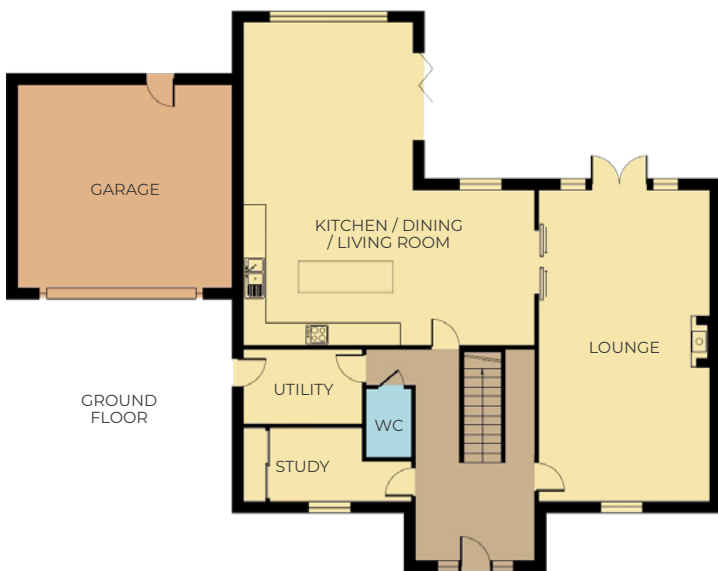


Kitchen / Dining Room	28'6" x 25'9"	8.69m x 7.84m *
Lounge	27'6" x 15'1"	8.39m x 4.61m
Study	14'10" x 6'7"	4.51m x 2.00m
Utility	10'6" x 6'7"	3.19m x 2.00m
Bedroom 1	15'0" x 14'5"	4.56m x 4.40m
Dressing Room	11'0" x 5'3"	3.35m x 1.60m
En-Suite Shower Room	11'0" x 15'11"	3.35m x 1.80m
Bedroom 2	15'3" x 14'10"	4.65m x 4.51m
En-Suite Shower Room	9'6" x 3'6"	2.90m x 1.07m
Bedroom 3	15'10" x 10'2"	4.56m x 3.09m
En-Suite Shower Room	12'8" x 5'3"	3.86m x 1.60m
Bedroom 4	14'9" x 11'11"	4.50m x 3.63m
Bathroom	10'5" x 7'6"	3.17m x 2.29m

* max

Please Note: All measurements are approximate and should be used as a guide only. Kitchen, bathroom & en-suite layouts are to be used as a guide and can vary plot dependant.

THE HAWTHORN



Kitchen / Living Area	28'6" x 25'8"	8.69m x 7.82m
Lounge	27'6" x 15'1"	8.39m x 4.61m
Study	14'10" x 6'7"	4.51m x 2.00m
Utility	10'6" x 6'7"	3.19m x 2.00m
Garage	18'11" x 17'11"	5.77m x 5.46m
Bedroom 1	15'0" x 14'5"	4.56m x 4.40m
Dressing Room	11'0" x 5'3"	3.35m x 1.60m
En-Suite Shower Room	11'0" x 15'11"	3.35m x 1.80m
Bedroom 2	15'3" x 14'10"	4.65m x 4.51m
En-Suite Shower Room	9'6" x 3'6"	2.90m x 1.07m
Bedroom 3	14'10" x 10'2"	4.51m x 3.09m
En-Suite Shower Room	12'6" x 5'3"	3.81m x 1.60m
Bedroom 4	14'10" x 11'11"	4.51m x 3.63m
Bathroom	10'4" x 7'6"	3.16m x 2.29m

Please Note: All measurements are approximate and should be used as a guide only. Kitchen, bathroom & en-suite layouts are to be used as a guide and can vary plot dependant.

THE ELM

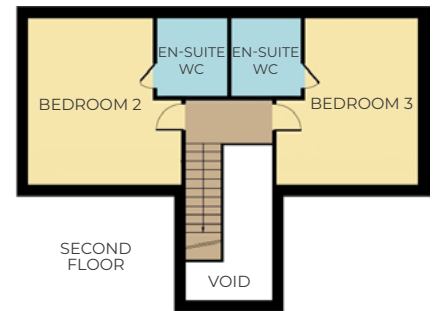
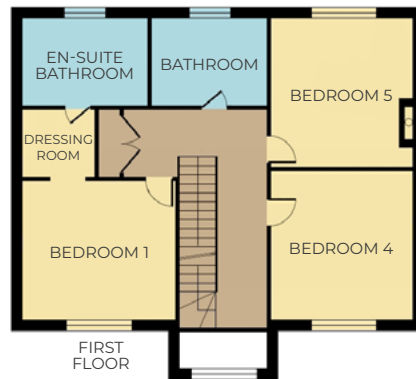
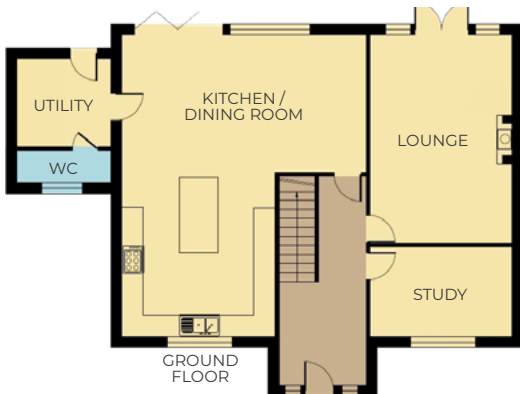


Kitchen / Living Area	40'10" x 17'2"	12.44m x 5.24m *
Lounge	25'3" x 14'7"	7.70m x 4.45m
Study	14'7" x 13'0"	4.45m x 3.95m
Utility	10'3" x 8'6"	3.12m x 2.60m
Bedroom 1	14'7" x 14'1"	4.45m x 4.29m*
En-Suite Shower Room	12'4" x 5'3"	3.75m x 1.60m
Bedroom 2	16'10" x 14'7"	5.14m x 4.45m
En-Suite Shower Room	14'7" x 14'11"	4.45m x 1.50m
Bedroom 3	16'10" x 14'7"	5.14m x 4.45m *
Bedroom 4	14'7" x 13'5"	4.45m x 4.10m
Bathroom	11'0" x 9'6"	3.35m x 2.90m

* max

Please Note: All measurements are approximate and should be used as a guide only. Kitchen, bathroom & en-suite layouts are to be used as a guide and can vary plot dependant.

THE FOXTAIL

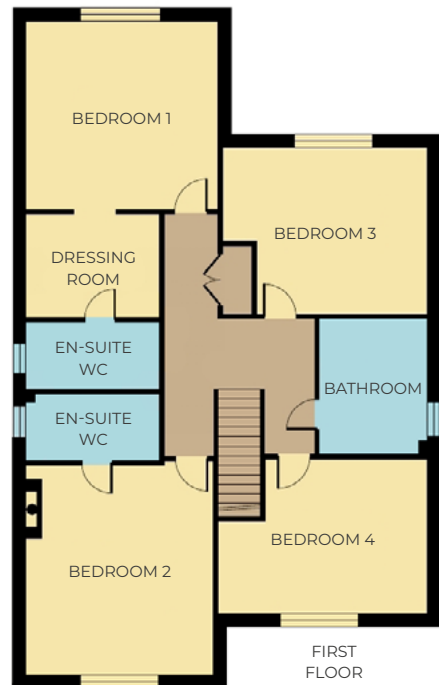
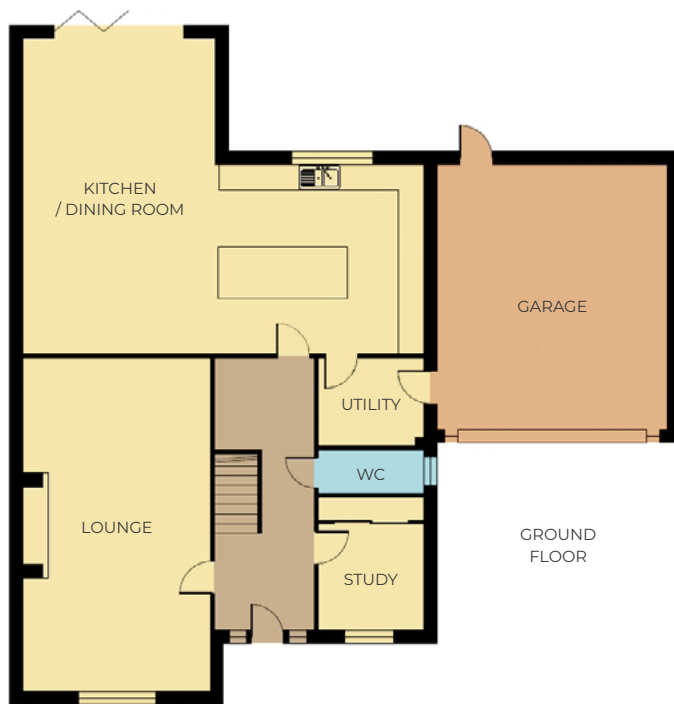


Kitchen / Dining Room	27'6" x 22'4"	8.39m x 6.81m *
Lounge	19'0" x 13'0"	5.79m x 3.95m
Study	13'0" x 8'2"	3.95m x 2.50m
Utility	8'8" x 8'0"	2.65m x 2.44m
Bedroom 1	14'1" x 12'8"	4.29m x 3.86m
Dressing Room	6'8" x 6'3"	2.02m x 1.90m
En-Suite Bathroom	11'6" x 8'0"	3.50m x 2.43m
Bedroom 4	13'7" x 13'0"	4.14m x 3.95m
Bedroom 5	13'7" x 13'0"	4.14m x 3.95m
Bathroom	10'6" x 8'0"	3.21m x 2.43m
Bedroom 2	15'3" x 14'1"	4.64m x 4.28m *
En-Suite WC	7'2" x 7'2"	2.18m x 2.18m
Bedroom 3	15'3" x 13'0"	4.64m x 3.95m *
En-Suite WC	7'2" x 6'5"	2.18m x 1.96m

* max

Please Note: All measurements are approximate and should be used as a guide only.
Kitchen, bathroom & en-suite layouts are to be used as a guide and can vary plot dependant.

THE WILLOW



Kitchen / Dining Room	30'6" x 24'0"	9.30m x 7.32m
Lounge	25'4" x 14'3"	7.71m x 4.34m
Study	10'3" x 8'0"	3.12m x 2.44m
Utility	8'0" x 6'8"	2.44m x 2.03m
Garage	20'2" x 17'5"	6.15m x 5.31m
Bedroom 1	14'7" x 14'4"	4.45m x 4.37m
Dressing Room	10'2" x 7'10"	3.10m x 2.39m
Bedroom 2	15'11" x 14'3"	4.85m x 4.34m
Bedroom 3	15'6" x 12'8"	4.72m x 3.86m
Bedroom 4	15'11" x 12'2"	4.85m x 3.71m
Bathroom	10'9" x 8'2"	3.00m x 2.49m

Please Note: All measurements are approximate and should be used as a guide only. Kitchen, bathroom & en-suite layouts are to be used as a guide and can vary plot dependant.

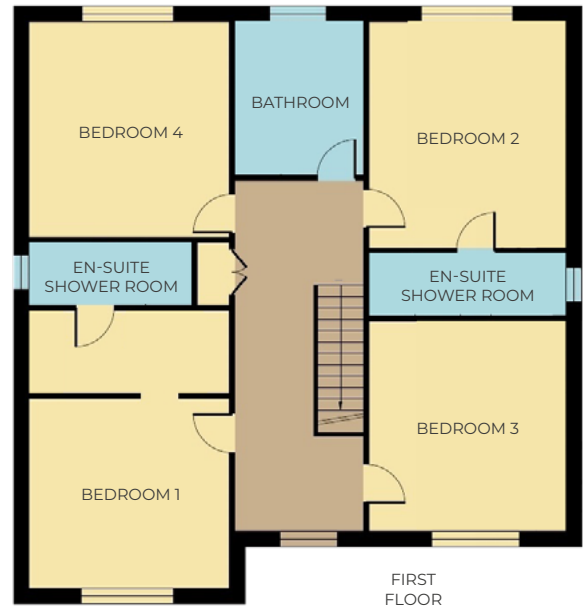
THE TULIP



Kitchen / Dining Room	25'4" x 11'5"	7.71m x 3.50m
Lounge	20'5" x 12'9"	6.25m x 3.95m
Study	9'6" x 7'1"	2.90m x 2.17m
Utility	7'9" x 6'1"	2.43m x 1.85m
Garage	20'6" x 17'1"	6.25m x 5.21m
Bedroom 1	20'6" x 17'1"	6.25m x 5.21m
En Suite Shower Room	9'7" x 6'7"	2.97m x 2.06m
Bedroom 2	13'1" x 9'8"	4.00m x 3.00m
Bedroom 3	11'10" x 10'8"	3.61m x 3.31m
Bedroom 4	14'14" x 9'6"	4.31m x 2.89m
Bathroom	9'8" x 6'7"	3.01m x 2.06m

Please Note: All measurements are approximate and should be used as a guide only. Kitchen, bathroom & en-suite layouts are to be used as a guide and can vary plot dependant.

THE ASPEN



Kitchen / Dining Room	34'2" x 16'5"	10.41m x 7.84m
Lounge	19'3" x 12'9"	5.87m x 3.89m
Study	12'6" x 8'0"	3.82m x 2.45m
Utility	8'7" x 7'3"	2.62m x 2.22m
Bedroom 1	12'9" x 12'1"	3.89m x 3.68m
Bedroom 2	14'5" x 12'6"	4.39m x 3.82m
Bedroom 3	13'4" x 12'6"	4.07m x 3.82m
Bedroom 4	13'8" x 12'9"	4.17m x 3.89m
Bathroom	9'9" x 8'2"	2.98m x 2.50m

Please Note: All measurements are approximate and should be used as a guide only. Kitchen, bathroom & en-suite layouts are to be used as a guide and can vary plot dependant.

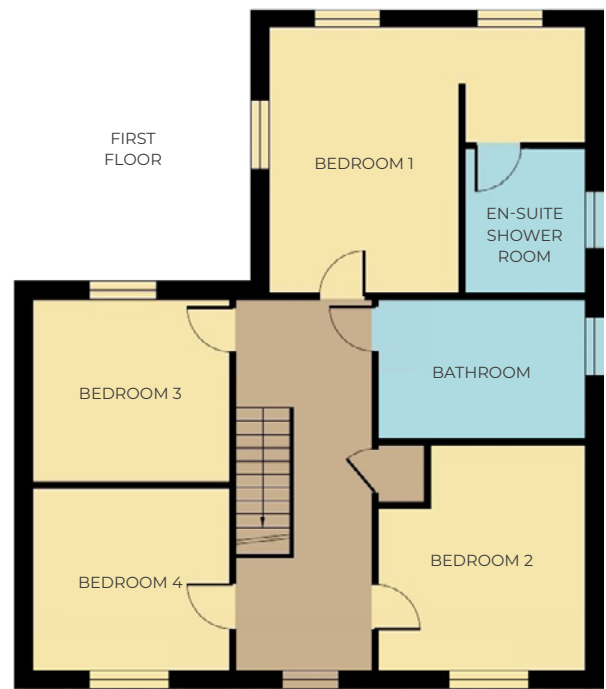
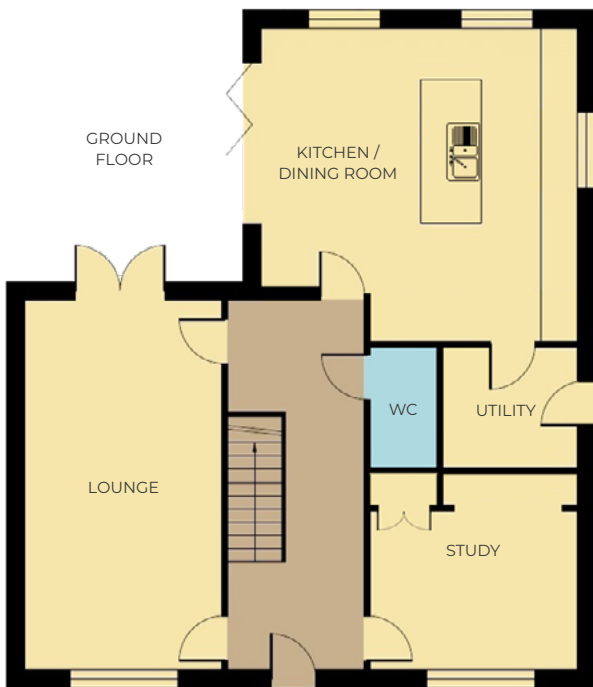
THE ELDER



Kitchen / Living Area	26'10" x 21'5"	8.17m x 6.53m
Utility	9'10" x 7'5"	2.99m x 2.25m
Garage	18'11" x 17'11"	5.77m x 5.46m
Bedroom 1	19'1" x 11'7"	5.82m x 3.53m
Bedroom 2	14'9" x 9'8"	4.50m x 2.95m
Bedroom 3	11'11" x 9'10"	3.63m x 2.99m
Bathroom	9'10" x 7'7"	2.99m x 2.30m

Please Note: All measurements are approximate and should be used as a guide only. Kitchen, bathroom & en-suite layouts are to be used as a guide and can vary plot dependant.

THE CEDAR



Kitchen / Dining Room	17'2" x 16'9"	5.24m x 5.18m *
Lounge	20'2" x 10'9"	6.14m x 3.27m
Study	11'2" x 10'8"	3.44m x 3.30m
Utility	7'4" x 6'7"	2.24m x 2.00m
Bedroom 1	17'2" x 14'5"	5.24m x 4.40m *
En-Suite Shower Room	7'7" x 6'7"	2.32m x 1.99m
Bedroom 2	12'3" x 11'3"	3.74m x 3.44m
Bedroom 3	10'9" x 9'11"	3.27m x 3.02m
Bedroom 4	10'9" x 9'11"	3.27m x 3.02m
Bathroom	11'3" x 7'7"	3.44m x 2.30m

* max

Please Note: All measurements are approximate and should be used as a guide only. Kitchen, bathroom & en-suite layouts are to be used as a guide and can vary plot dependant.



Over 60? Save thousands on your new home!

A Home for Life Plan offers a simple way for you to secure your ideal new home for up to 59% less* and be mortgage-free.

- ✓ Live in your ideal home in the perfect location
- ✓ Afford a higher-value property with no rent, mortgage, or interest
- ✓ Provide a guaranteed inheritance
- ✓ Free up funds and create savings
- ✓ Have security for the future in a home you love

“We have the blessing of living in our lovely home because of Homewise. We can enjoy retirement without the worry of a mortgage or loan and will always be grateful to the team for making our carefree retirement possible.”

Mark and Pamela, Homewise Customers

With greater savings versus the full purchase price, you have more choice. Is your dream home now within reach? Talk to our team today 01775 717360

Find out how much you could save - use our quick calculator to explore how much your new home could cost with Homewise's Home for Life Plan.

pygott-crone.com/over-60s-home-for-life

*Savings against the property value range from 8.5% to 59% for freehold properties and depend on the customer's age, personal circumstances, and property criteria. Only available to those aged sixty years old and over. Homewise terms and conditions apply.



Individual properties may vary from the information shown here. All sizes are approximate and should not be used to measure for furnishings.

Please refer to the site map for plot numbers for the house type. The dimensions are taken from the architect's plans and should not be used as a basis for the purchase of furnishings. Individual properties may vary from illustrations shown. This information is for guidance only and does not form part of a contract.

There is a site management company, and charge per year. Talk to us about costs.

FIND OUT MORE

If you'd like to find out more about the homes at Brunswick Fields, please contact us and we would be delighted to tell you more.



EMAIL

spalding@pygott-crone.com



CALL

01775 717360



VISIT

pygott-crone.com

