

oakheart

£400,000

Guide Price

Glebe Road, Colchester



Guide Price: £400,000 - £425,000

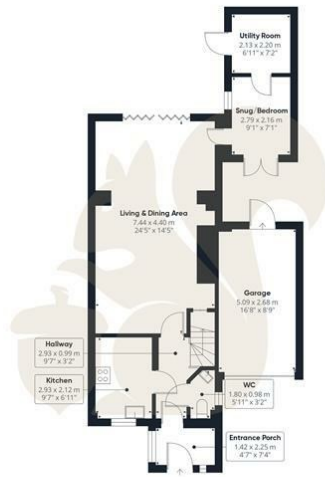
An exceptional extended and renovated three/four bedroom terraced home offering superbly versatile living space, high-spec finishes and impressive outdoor additions, ideally positioned on Glebe Road in South Colchester. The property enjoys convenient access to highly regarded primary and secondary schools, local amenities, and excellent transport links including nearby bus routes and easy access to Colchester Town and North stations.











Ground Floor Building 1



Floor 1 Building 1



Ground Floor Building 2

oakheart

Approximate total area⁽¹⁾
119.7 m²
1288 ft²

(1) Excluding balconies and terraces

Calculations reference the RICS IPMS 3C standard. Measurements are approximate and not to scale. This floor plan is intended for illustration only.

GIRAFFE360

Local Authority:
Colchester

Tenure:
Freehold

Council Tax Band:
D

Energy Efficiency Rating

	Current	Potential
<i>Very energy efficient - lower running costs</i>		
(92 plus) A		90
(81-91) B		
(69-80) C	76	
(55-68) D		
(39-54) E		
(21-38) F		
(1-20) G		
<i>Not energy efficient - higher running costs</i>		
England & Wales	EU Directive 2002/91/EC	

Agents Note: Whilst every care has been taken to prepare these particulars, they are for guidance purposes only. All measurements are approximate and are for general guidance purposes only and whilst every care has been taken to ensure their accuracy, they should not be relied upon.

Oakheart Colchester
01206 803 308
colchester@oakheart.co.uk
2b Cotman Road, Colchester, Essex, CO3 4QJ

oakheart