



2 Clover Drive,
£700,000

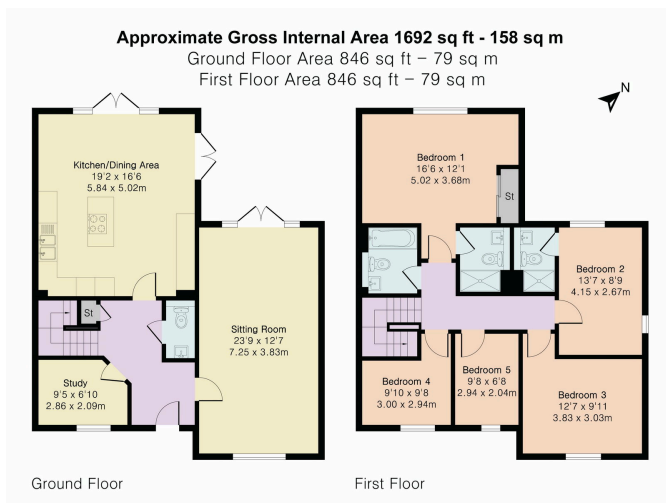
5 3 2



- Impressive five-bedroom detached family home
- Superb open-plan kitchen, dining and family space with central island
- Principal bedroom with stylish en-suite shower room
- Contemporary family bathroom
- Garage and driveway providing off-road parking
- Highly sought-after Prestbury location near Cheltenham Racecourse
- Separate living room and additional reception room/study downstairs
- Additional guest bedroom with en-suite
- Private enclosed rear garden with patio seating area
- Modern development close to village amenities and countryside walks

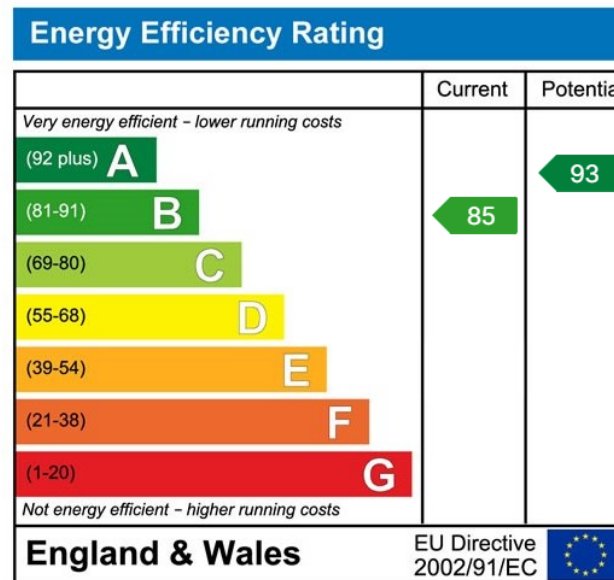


A beautifully presented five-bedroom detached family home located within a desirable modern development in the highly sought-after village of Prestbury, close to Cheltenham Racecourse. Offering spacious and versatile accommodation including an impressive open-plan kitchen/dining/family room, multiple reception areas and a private rear garden, this property provides an exceptional setting for modern family living.



PINK PLAN

Floor plan produced in accordance with RICS Property Measurement 2nd Edition. Although Pink Plan List ensures the highest level of accuracy, measurements of doors, windows and rooms are approximate and no responsibility is taken for error, omission or misstatement. These plans are for representation purposes only and no guarantee is given on the total square footage of the property within this plan. The figure form is for initial guidance only and should not be relied on as a basis of valuation.



Elliot Oliver Sales
 101 Promenade, Cheltenham GL50 1NW
 01242 321091
 www.eosales.co.uk

