



Hirons Farm
Cherington | Shipston-on-Stour | Warwickshire | CV36 5HS

STEP INSIDE

An exceptional Private gated Grade II listed farmhouse with luxury interiors, multiple versatile outbuildings including a 1 bed annexe and equestrian stables covering 10.5 acres in a peaceful village setting.

Set behind private electric gates in a picturesque and tranquil village setting, Hirons Farm is an exceptional 10.5 acre equestrian country estate that seamlessly combines period charm with refined contemporary living.

In full bloom, the front of the house is framed by flourishing hydrangeas, creating a striking and picturesque first impression of the luxury Grade II listed farmhouse which is rich in character, showcasing a wealth of original features including exposed beams and fireplaces, carefully balanced with high-quality luxury modern interiors. The accommodation is both elegant and practical, with beautifully designed living spaces that offer comfort, style, and a strong connection to the surrounding countryside.









In addition to the main house, a well-appointed one-bedroom annexe provides fully self-contained accommodation, previously utilised as a successful holiday rental, ideal for income generation or independent guest use.

The estate is further enhanced by a substantial two-storey barn, offering excellent versatility for a variety of uses with water and heating all in place.

A charming shepherd's hut adds further appeal, perfectly suited as a private retreat or additional guest accommodation.

Equestrian and lifestyle buyers are particularly well catered for, with stables and approximately 10.5 acres of land, providing ample space for grazing, recreation, or smallholding use. A large 12m x 18m storage unit with electric roller access delivers significant practical benefit, suitable for a range of commercial or personal requirements.

Sustainability has been thoughtfully integrated, with solar panels designed to enhance the property's overall efficiency and help offset energy consumption.

Travel

Shipston-on-Stour 4.5 miles, Moreton-in-Marsh 7 miles where trains to London Paddington take around 90mins.

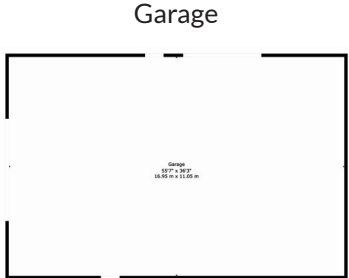
Banbury 12 miles - where trains to Marylebone take around 60 mins.

Chipping Norton 9 miles, Oxford 29 miles, Birmingham

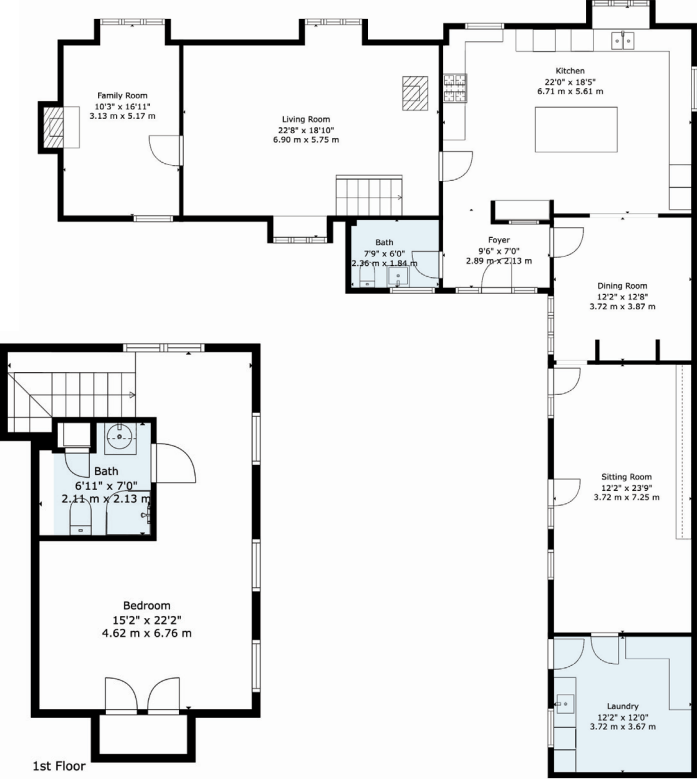
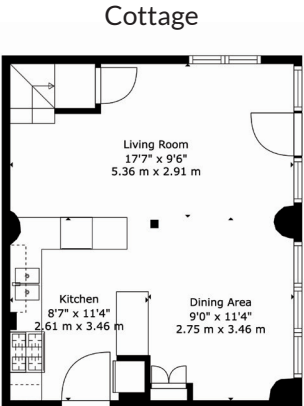
International Airport 39 miles * Approximate timings



Hirons Farm House



TOTAL: 2028 sq. ft. 188 sq. m

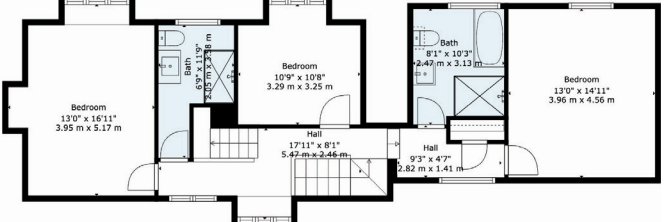


1st Floor

Ground Floor

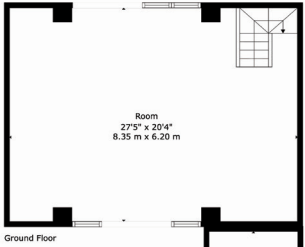


2nd Floor

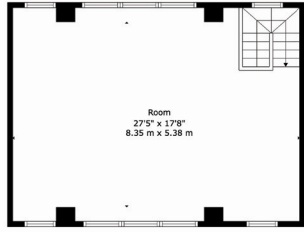


1st Floor

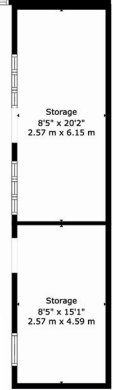
Barn Sheds



Ground Floor

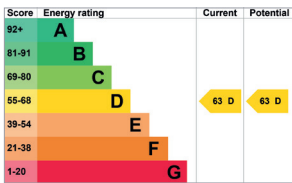
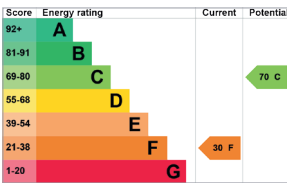


1st Floor



EPC: Hirons Farm House

EPC: Annexe



Agents notes: All measurements are approximate and for general guidance only and whilst every attempt has been made to ensure accuracy, they must not be relied on. The fixtures, fittings and appliances referred to have not been tested and therefore no guarantee can be given that they are in working order. Internal photographs are reproduced for general information and it must not be inferred that any item shown is included with the property. For a free valuation, contact the numbers listed on the brochure. Copyright © 2026 Fine & Country Ltd. Registered in England and Wales. Company Reg No. 8328850. Registered Office: 121 Park Lane, Mayfair, London, W1K 7AG. Printed 17.04.2026



Fine & Country Cotswolds and Cirencester
2 A P Ellis Rd, Upper Rissington, Cheltenham, GL54 2QB
01608 619919 | 07979 648748 | kathryn.anderson@fineandcountry.com

