



Guide Price
£435,000

Freehold

4x  2x  1x 

**Manor Mews, Ringwould,
Deal, Kent, CT14**

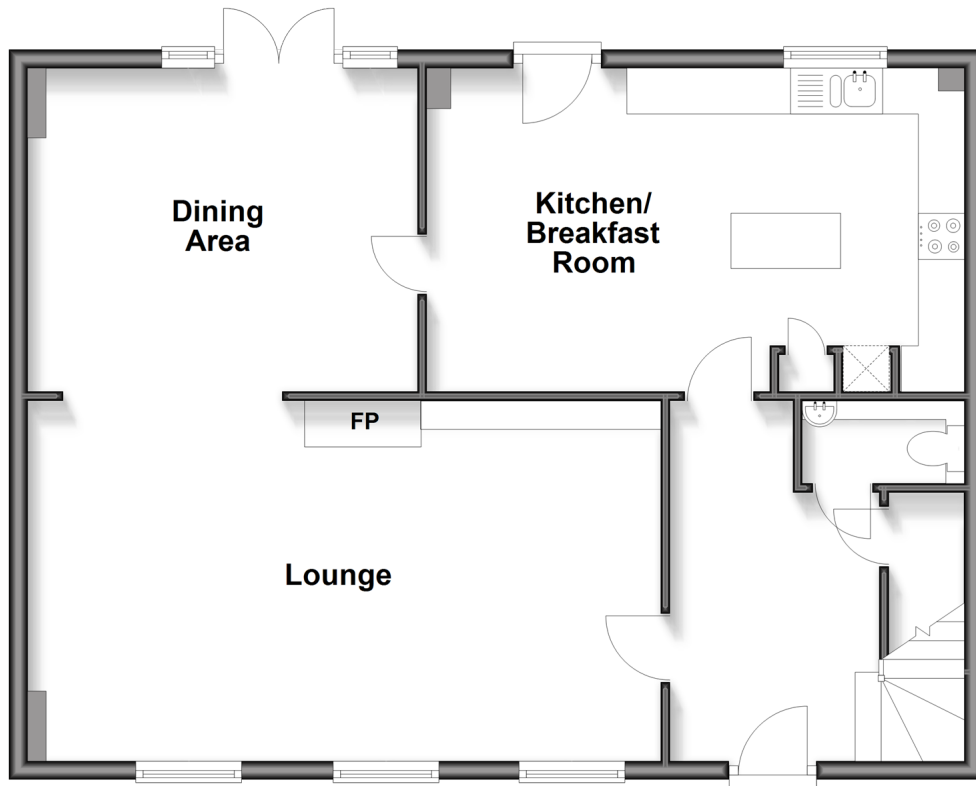
OVER 60?

Secure this property
for up to **59% less!**

Wards
Helping you move forwards

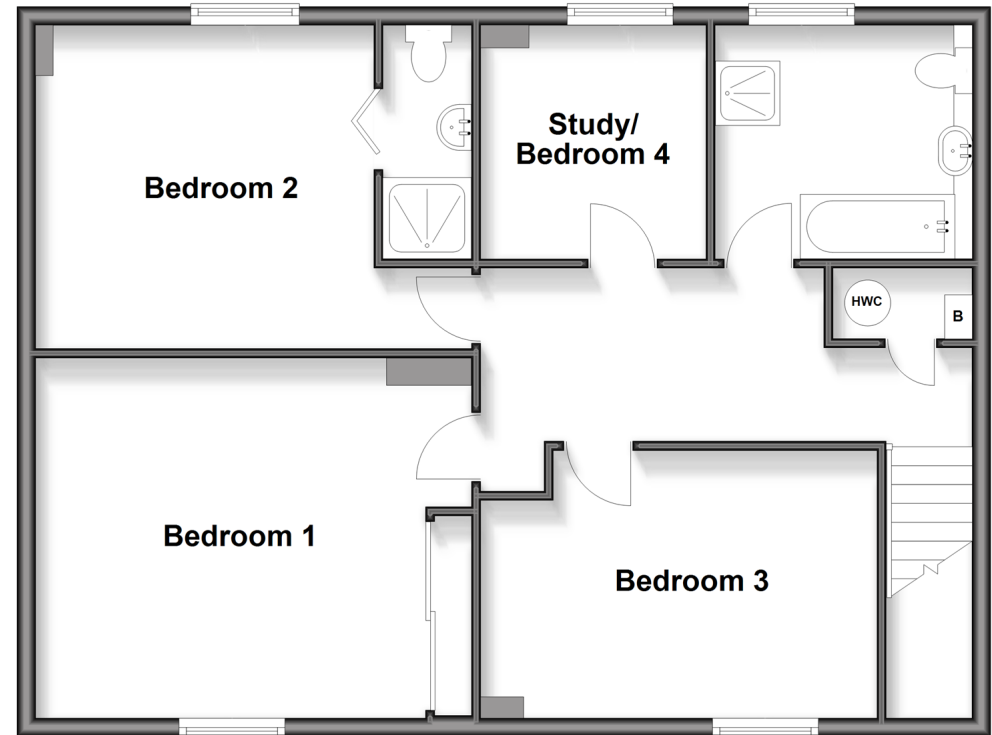
Ground Floor

Approx. 76.8 sq. metres (826.3 sq. feet)



First Floor

Approx. 76.8 sq. metres (826.3 sq. feet)



Accommodation

GROUND FLOOR

Entrance Hallway

Cloakroom

Kitchen/Breakfast Room : 19'1 x 11'9 (5.82m x 3.58m)

Dining Area: 13'8 x 11'8 (4.17m x 3.56m)

Lounge : 22'2 x 12'8 (6.76m x 3.86m)

FIRST FLOOR

Landing

Bathroom

Study/Bedroom 4 : 8'5 x 8'2 (2.57m x 2.49m)

Bedroom 2: 12'0 x 11'10 (3.66m x 3.61m)

En-Suite Shower Room

Bedroom 1: 15'2 x 12'8 (4.63m x 3.86m)

Bedroom 3: 14'3 x 9'9 (4.35m x 2.97m)

OUTSIDE

Front and Rear Gardens

Double Garage



Main features

- Set in a quiet private cul-de-sac in a village location
- Double garage and off road parking
- Spacious rooms throughout
- Large rear garden with sandstone patio
- Perfect family home, minutes from bus routes servicing Deal and Dover



Nearest Schools

Primary Schools: Kingsdown and Ringwold CofE Primary 0.9 miles, The Downs C of E Primary 1.6 miles, St Mary's Catholic Primary 1.7 miles

Secondary Schools: Learning Opportunities Centre



Transport Information

Train Stations: Walmer 1.2 miles, Martin Mill 1.5 miles, Deal 2.7 miles



Address

Manor Mews, Ringwold, Deal, Kent, CT14



Directions

For directions to this property please contact us.



Wards
Helping you move forwards

Call Deal Branch 01304 361420 ■ wardsofkent.co.uk



- If buying to let, the energy rating will need to be improved to at least 'E' rating before you can let the property
- Appliances & services are untested, dimensions are approximate and floor plans are not to scale

- Legal advice should be taken to verify fixtures/fittings, planning, alterations and/or lease details
- Through a Homewise Home For Life Plan people aged 60+ can secure this property for up to 59% less, by purchasing a Lifetime Lease



10634610/20260210/LB1/LB1