





Lord Street, Hoddesdon, EN11 8NE

Westwood Leber are delighted to present this beautifully presented four-bedroom detached family home offers spacious and contemporary accommodation finished to an exceptional standard throughout, situated on the ever-popular Lord Street in Hoddesdon

The current owners have meticulously modernised the property, creating a stylish and high-specification interior perfectly suited for modern family living. The ground floor comprises a welcoming entrance hallway, downstairs cloakroom, a bright and spacious living room, separate dining room and a stunning contemporary kitchen with ample storage and workspace.

To the first floor, four well-proportioned bedrooms are arranged around a central landing and are complemented by a modern family bathroom finished to an excellent standard.

Externally, the property enjoys a superbly maintained rear garden offering an ideal space for entertaining and family enjoyment. A substantial double garage provides excellent additional storage or potential workshop space, whilst further parking is available.

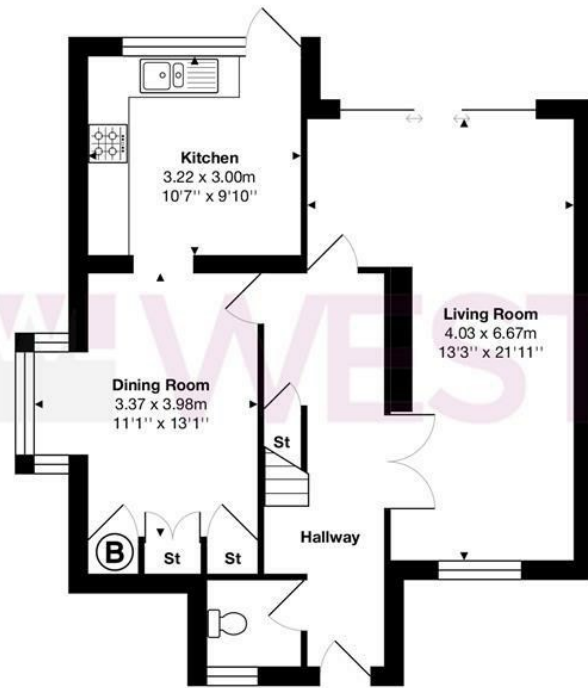
Conveniently positioned within easy reach of Hoddesdon town centre, excellent local schooling, transport links and an array of local amenities, this outstanding family home combines modern living with a highly desirable location.

An internal viewing is highly recommended.

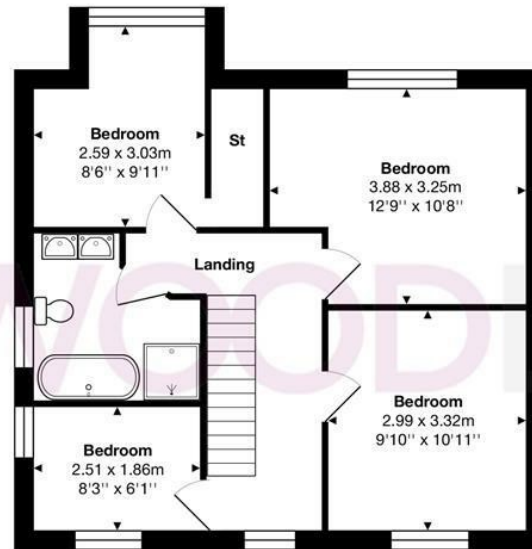


 WESTWOODLEBER

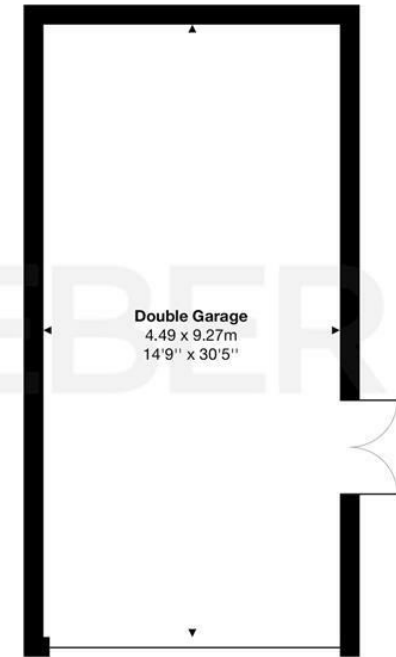
 WESTWOODLEBER
LET US GUIDE YOU HOME



Ground Floor



First Floor



Garage

Total Area: approx. 151.0 m² ... 1625 ft²

THE FLOORPLAN IS FOR ILLUSTRATIVE PURPOSES ONLY AND IS NOT TO SCALE.
Measurements and features are approximate and may differ from the actual property. Verify all details independently; no liability is accepted for errors or omissions.

Property marketing provided by www.fotomarketing.co.uk



WESTWOODLEBER



WESTWOODLEBER



WESTWOODLEBER



WESTWOODLEBER





WESTWOODLEBER



WESTWOODLEBER



WESTWOODLEBER



WESTWOODLEBER









WESTWOODLEBER



WESTWOODLEBER



WESTWOODLEBER

