



PEAR
PROPERTIES



Beachcroft Place, Lancing
Lancing

Guide Price £240,000



Beachcroft Place

Lancing, Lancing

Modern and chain free first floor apartment with two double bedrooms, spacious living room, and fitted kitchen. Close to Lancing Village, seafront, and transport links.

Council Tax band: B

Tenure: Leasehold

EPC Energy Efficiency Rating: E

EPC Environmental Impact Rating: D

- Chain Free
- First Floor Apartment
- Two Double Bedrooms
- Spacious Living / Dining Room
- Modern Fitted Kitchen
- Modern Fitted Bathroom
- Close To Lancing Village, Seafront & Public Transport
- Please Take A Look At Our Virtual Tour



Living / Dining Room

16' 2" x 13' 9" (4.92m x 4.20m)

Spacious dual-aspect living room / dining room.

Kitchen

8' 9" x 10' 3" (2.67m x 3.12m)

Modern fitted kitchen with base units, and space for appliances.

Bedroom One

15' 0" x 8' 11" (4.56m x 2.71m)

Good-sized double bedroom with space for wardrobes

Bedroom Two

14' 11" x 9' 1" (4.55m x 2.76m)

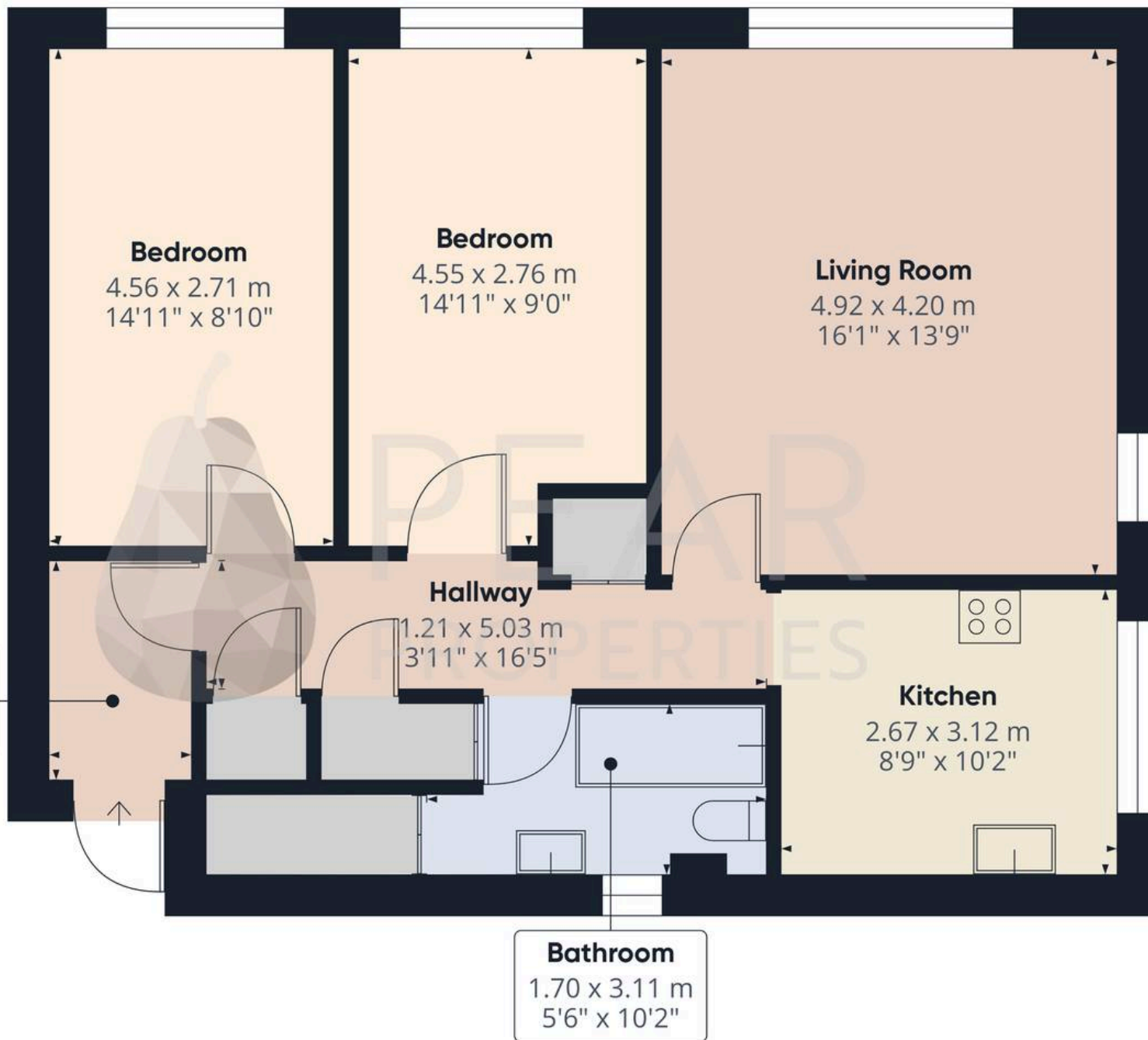
Bright second double bedroom

Luxury Style Bathroom

5' 7" x 10' 2" (1.70m x 3.11m)

Modern partially tiled bathroom, comprising jacuzzi bath with shower over, WC, and hand wash basin





Approximate total area⁽¹⁾

71.2 m²
766 ft²

(1) Excluding balconies and terraces

Calculations reference the RICS IPMS 3C standard. Measurements are approximate and not to scale. This floor plan is intended for illustration only.

GIRAFFE360



Pear Properties

20 Crabtree Lane, Lancing - BN15 9QP

01903 947337 · hello@pearproperties.uk · pearproperties.uk