

Beech Close

West Drayton • Middlesex • UB7 9LQ

Guide Price: £525,000



coopers
est 1986

Beech Close

West Drayton • Middlesex • UB7 9LQ

This beautifully presented home has been finished to an exceptional standard throughout, offering a perfect blend of style, space and quality craftsmanship. The property has clearly benefited from a high-spec refurbishment, with a stunning open-plan kitchen/diner featuring contemporary cabinetry, integrated appliances and generous work surfaces, complemented by excellent natural light. Living spaces are immaculately decorated with quality flooring, bespoke storage and thoughtful design touches, while the bedrooms are well-proportioned and finished with fitted furniture and a calm, modern aesthetic. Outside, the landscaped rear garden provides a low-maintenance yet versatile space ideal for entertaining and family use. Overall, this is a turnkey home where the condition, specification, and attention to detail are immediately apparent.

No chain

Stunning family home

Terraced

Three double bedrooms

Remarkable Kitchen / dining room

Amble living space

1113 sq.ft

Spacious, low maintenance rear garden

Driveway for multiple cars

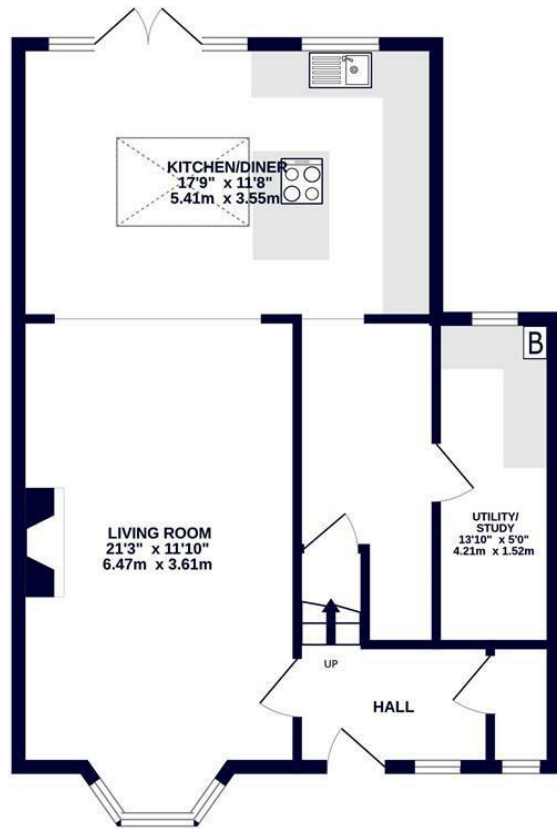
Popular residential location

These particulars are intended as a guide and must not be relied upon as statements of fact. Your attention is drawn to the Important Notice on the last page.

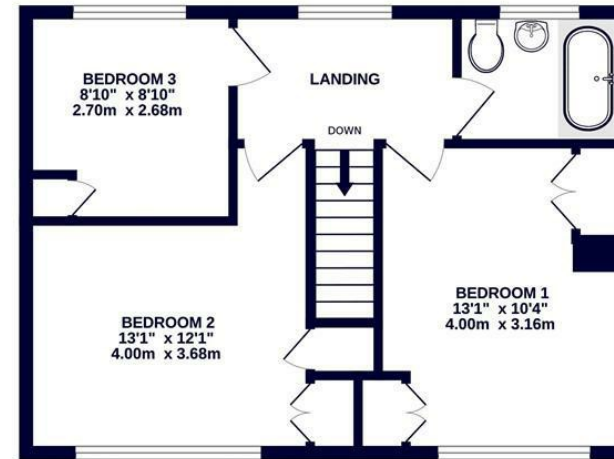




GROUND FLOOR
641 sq.ft. (59.6 sq.m.) approx.



1ST FLOOR
471 sq.ft. (43.8 sq.m.) approx.



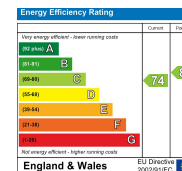
TOTAL FLOOR AREA : 1113 sq.ft. (103.4 sq.m.) approx.

Whilst every attempt has been made to ensure the accuracy of the floorplan contained here, measurements of doors, windows, rooms and any other items are approximate and no responsibility is taken for any error, omission or mis-statement. This plan is for illustrative purposes only and should be used as such by any prospective purchaser. The services, systems and appliances shown have not been tested and no guarantee as to their operability or efficiency can be given.
Made with Metropix ©2026



1 Tavistock Road, West Drayton,
Middlesex, UB7 7QT
westdrayton@coopersresidential.co.uk

CoopersResidential.co.uk



Important Notice: These particulars, whilst believed to be accurate are set out as a general outline only for guidance and do not constitute any part of an offer or contract. Intending purchasers should not rely on them as statements or representation of fact, but must satisfy themselves by inspection or otherwise has the authority to make or give any representation or warranty in respect of the property.