



## Aldersgate Street, EC1A

£3,100 Per calendar month

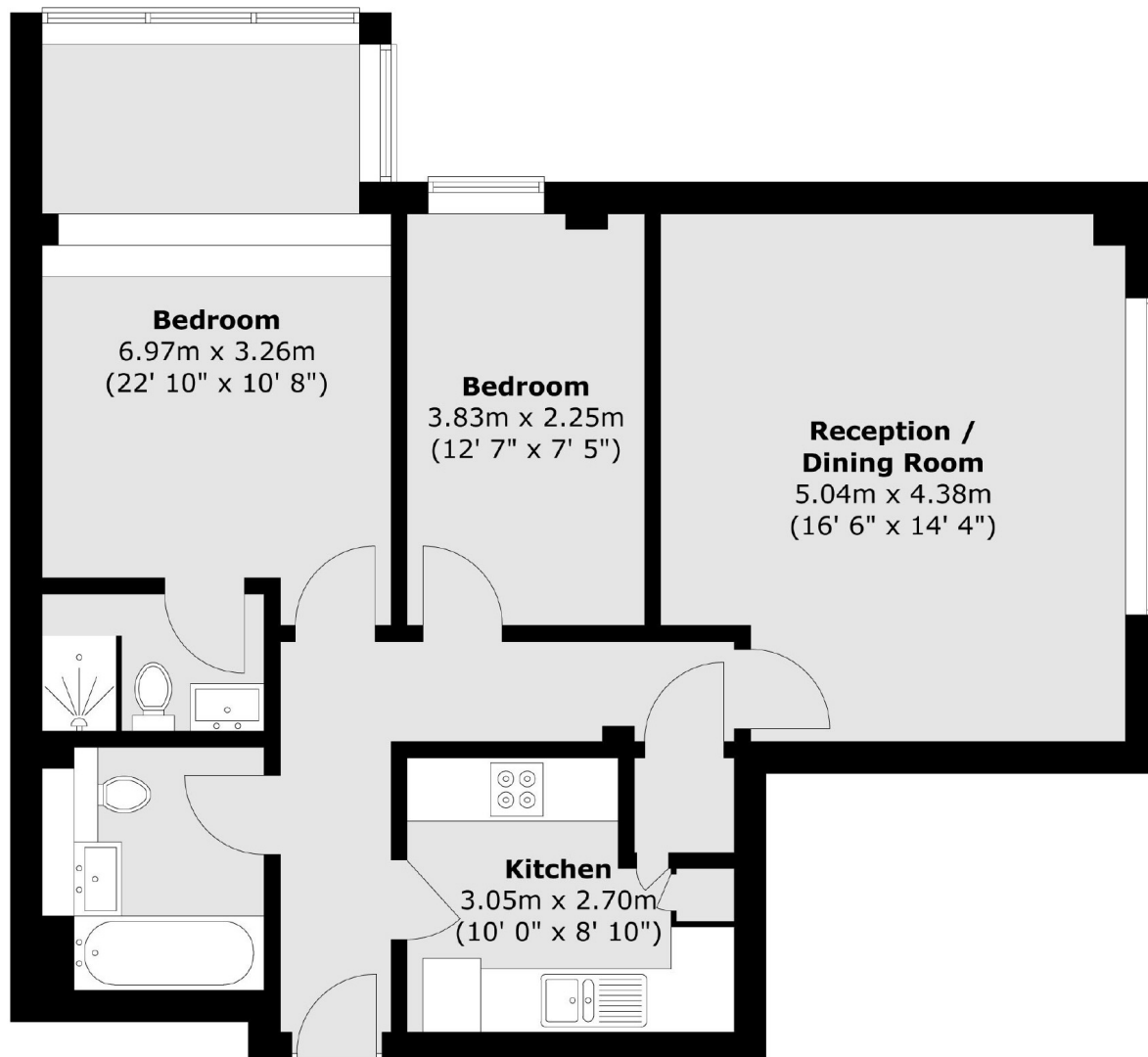
A large two double bedroom, two bathroom apartment located next to the Barbican. The property has a large living room with double glazed windows, a separate kitchen with integrated appliances including a washing machine and dishwasher, a communal roof terrace and daytime concierge. Both bathrooms have been recently refurbished.

Cathedral Lodge is located less than 200 yards from Barbican Underground Station.

### Features

Daytime concierge  
Two Bedrooms  
Two bathrooms  
Communal Roof Terrace  
Separate Kitchen

Aldersgate Street,  
London, EC1A



Total area (approx.) : 73.3 sq. m (789 sq. ft)