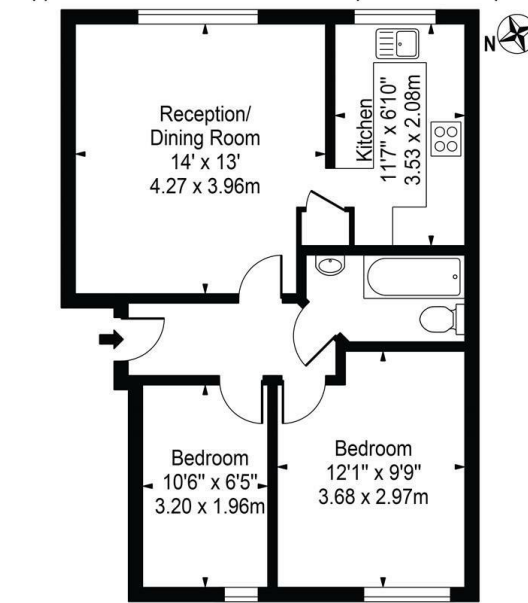


Streamside Close
 Approx. Gross Internal Area 542 Sq Ft - 50.35 Sq M



Ground Floor
 For Illustration Purposes Only - Not To Scale



CHURCHILL
 estates

Streamside Close, Edmonton, N9 9XB
 £1,650 Per Month

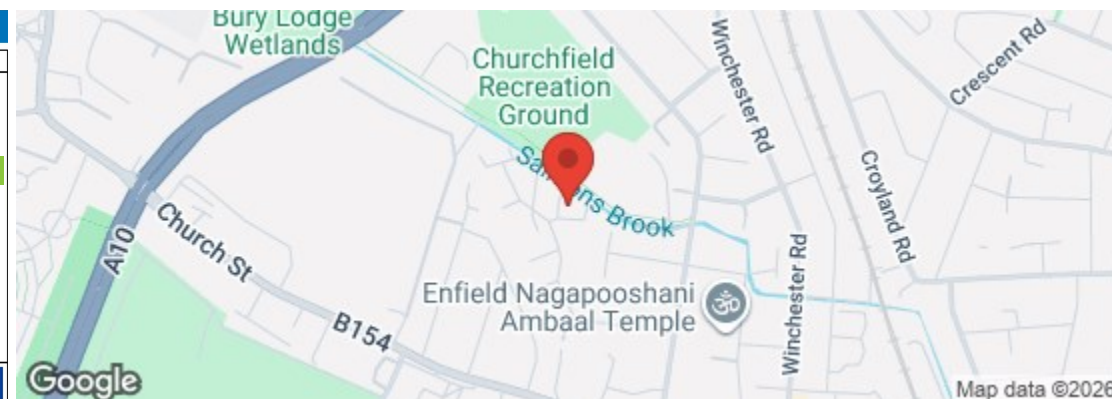
Bedrooms: 2 | Reception Rooms: 1 | Bathrooms: 1



Request a Viewing: **020 8529 5500** Email: northchingford@wearechurchills.co.uk

Council: Enfield Council | Council Tax Band: C | Floor Area: sq ft

Energy Efficiency Rating		Current	Potential
Very energy efficient - lower running costs			
(92 plus) A			
(81-91) B			
(69-80) C			
(55-68) D			
(39-54) E			
(21-38) F			
(1-20) G			
Not energy efficient - higher running costs			
England & Wales		72	78
	EU Directive 2002/91/EC		



The Agent has not tested any apparatus, equipment, fixtures and fittings or services and so cannot verify that they are in working order or fit for the purpose. A buyer is advised to obtain verification from their solicitor or surveyor. References to the tenure of a property are based on information supplied by the seller. The agent has not had the sight of the title documents. A buyer is advised to obtain verification from their solicitors.

CHURCHILL
 estates

