



Nelson Road, SW19  
£1,100,000

**Dexters**



## Nelson Road, SW19

Undoubtedly one of the finest three double bedroom Victorian houses, within the 'Battles'. The house has been extended to the rear and loft with a bespoke open plan kitchen leading to a west facing garden.

The ground floor has been cleverly arranged, retaining a utility room with w/c and a reception room to the front of the house with wooden shutters. There's an incredible open kitchen/ dining room to the rear with bi-folding doors and large Velux windows.

The first floor has two double bedrooms, both with built in wardrobes and wooden shutters. The family bathroom is a perfectly fitted four piece suite, with a free standing shower. Along the landing you'll find stairs to the loft conversion, with beautiful shutters and a luxury walk in shower room.

One of the clear exceptional features is the outstanding west facing garden. Designed and planted with all four seasons of the year fully thought out, with rear access for bikes and wheelbarrows, this garden is a true one off.

Nelson Road is in the sought after area of South Wimbledon. There are outstanding transport links and a lively High Street with a selection of shops, bars, restaurants, cinema and theatre.

### Features

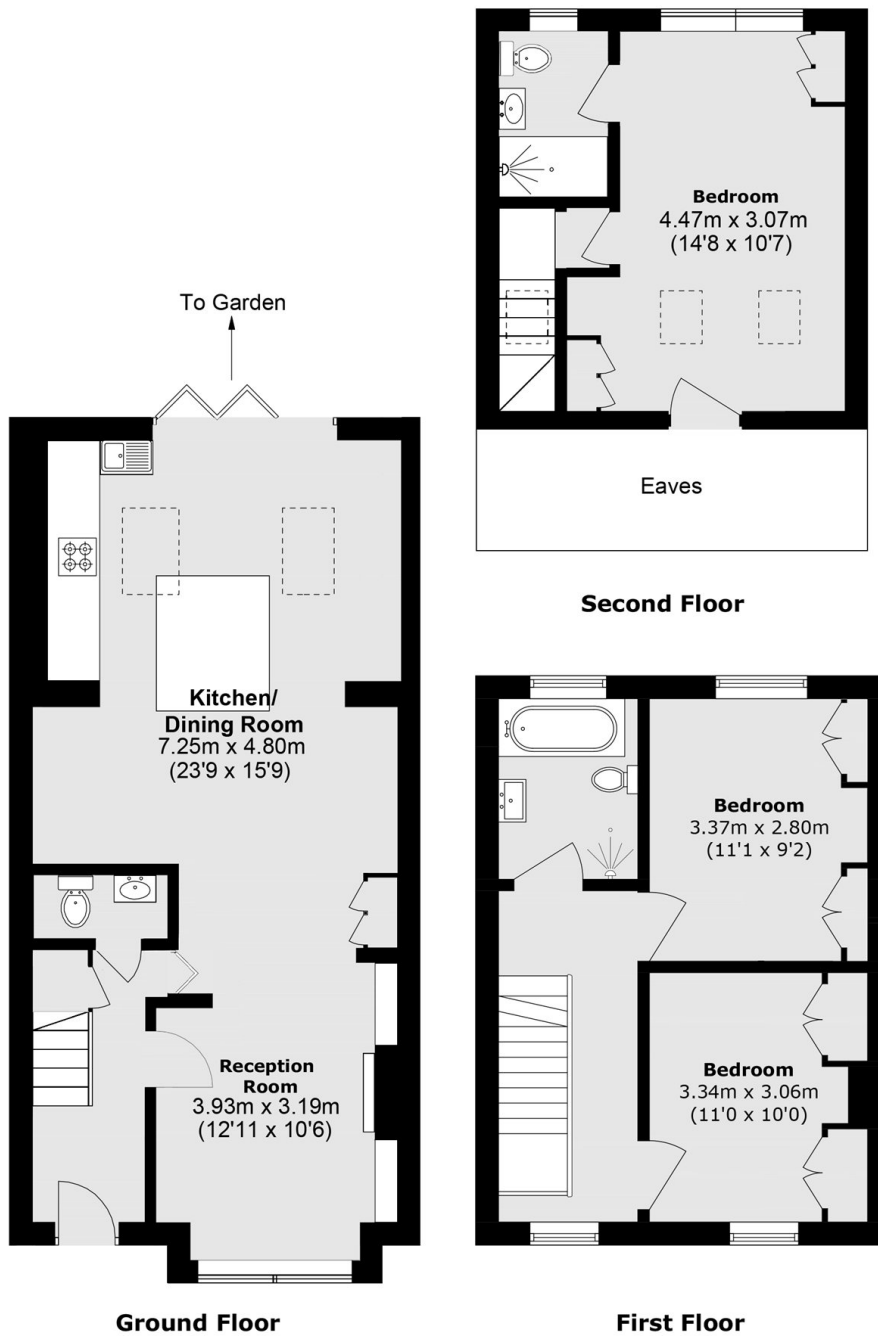
- Three Double Bedrooms
- Two Bathrooms
- West Facing Garden
- Exceptional Garden
- Open Kitchen/ Dining
- Four Season Planted Garden







Nelson Road,  
London, SW19



Total area (approx.): 108.2 sq. m (1,164.0 Sq. ft)  
(Excluding Eaves)