



## Lower Square, TW7

### £445,000

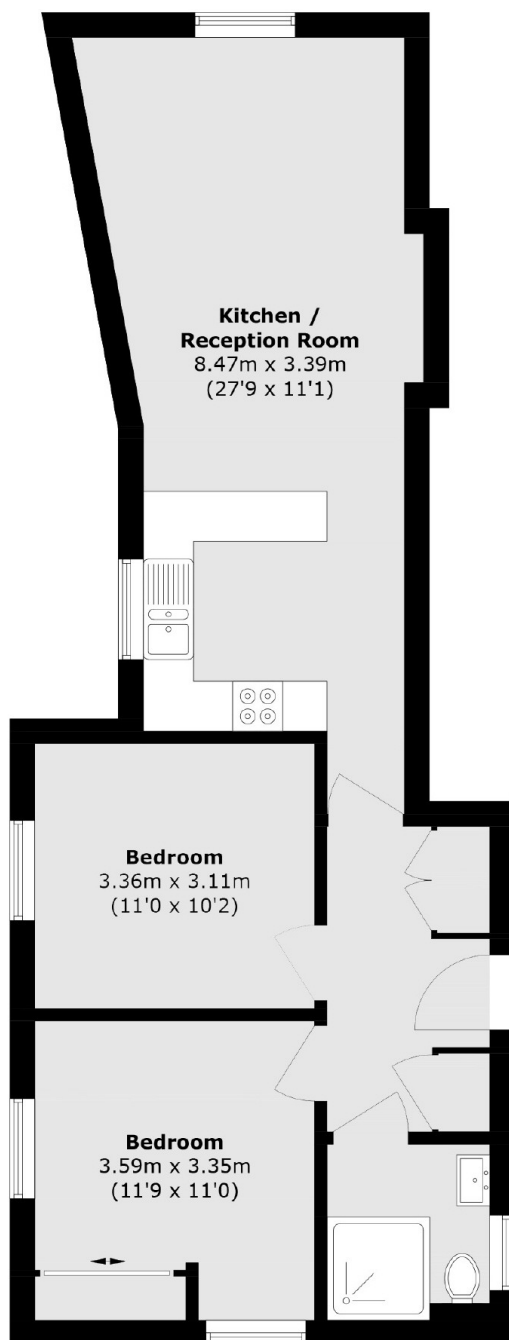
Located on the first floor of an impressive grade II listed period building, is this bright and spacious two double bedroom apartment. The property has a well designed and practical layout featuring an open-plan kitchen/reception area and a modern shower room. The dual aspect windows in the master bedroom flood the room with natural light enhancing the airy feel of this apartment and the built in wardrobes provide ample storage space. Further benefits include secure allocated off-street parking.

Lower Square is a quiet picturesque spot in Old Isleworth on the banks of the River Thames. The apartment is situated within 1.0 mile of St Margarets village with its boutique shops, cafes and train station which has direct links to London Waterloo. Redlees Park and Syon Park are close by.

### Features

- Grade II Listed Building
- First Floor Apartment
- Two Double Bedrooms
- Open Plan Kitchen
- Integrated Storage Space
- Allocated Secure Parking

# Lower Square, Old Isleworth, TW7



Total area (approx.): 65.5 sq. m (705.0 sq. ft)

## Dexters

St Margarets  
1 Chertsey Road  
St Margarets  
TW1 1LR  
Sales  
020 8744 9400

Energy Rating: D. We aim to make our particulars both accurate and reliable. However they are not guaranteed; nor do they form part of an offer or contract. If you require clarification on any points then please contact us, especially if you're traveling some distance to view. Please note that appliances and heating systems have not been tested and therefore no warranties can be given as to their good working order.

 **RICS** | Regulated  
Estate Agent  
and Letting Agent

[dexters.co.uk](https://www.dexters.co.uk)