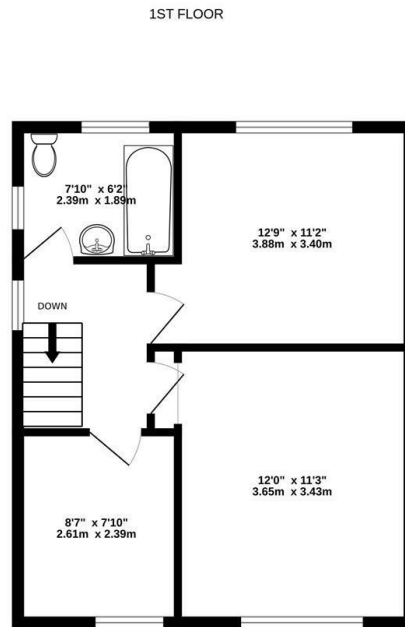
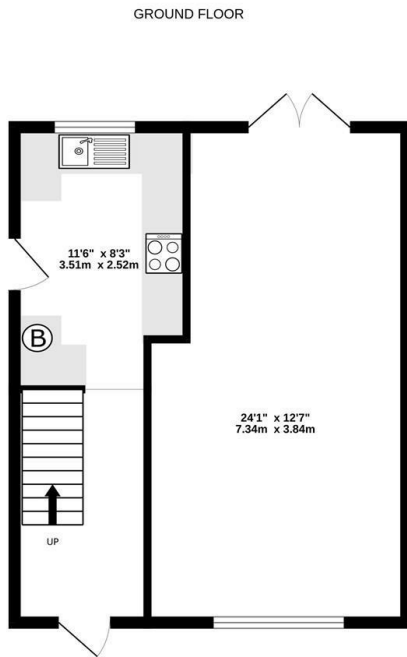




## 140 Fairchildes Avenue, New Addington, Croydon, CR0 0AN

Asking Price £435,000

- Three-bedroom semi-detached home
- Three double bedrooms
- Good-sized fitted kitchen
- Close to schools and transport links
- Spacious through lounge
- First-floor family bathroom
- Private driveway
- Large rear garden
- Bright and airy throughout
- Quiet residential road



Whilst every attempt has been made to ensure the accuracy of the floorplan contained here, measurements of doors, windows, rooms and any other items are approximate and no responsibility is taken for any error, omission or mis-statement. This plan is for illustrative purposes only and should be used as such by any prospective purchaser. The services, systems and appliances shown have not been tested and no guarantee as to their operability or efficiency can be given.  
Made with Metropix ©2026



## Directions

## Viewings

Viewings by arrangement only. Call 0208 681 8133 to make an appointment.

## Council Tax Band

C

## EPC Rating:

C

Energy Efficiency Rating		
	Current	Potential
Very energy efficient - lower running costs		
(92 plus) <b>A</b>		
(81-91) <b>B</b>		<b>87</b>
(69-80) <b>C</b>	<b>70</b>	
(55-68) <b>D</b>		
(39-54) <b>E</b>		
(21-38) <b>F</b>		
(1-20) <b>G</b>		
Not energy efficient - higher running costs		
<b>England &amp; Wales</b>	EU Directive 2002/91/EC	